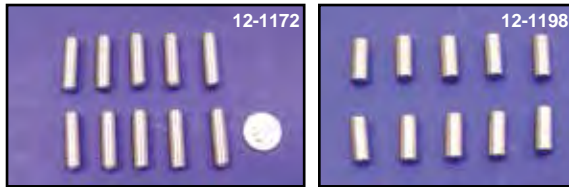




# Pin



**Dowel Pin-Roll Pin.** Special pins in 25 packs. Check factory parts book for more applications.

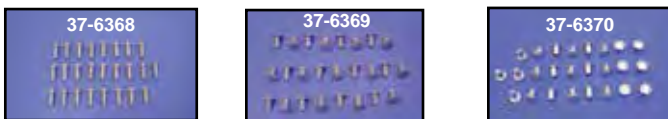
VT No.	OEM	Fits	Use
12-1198	221	1990-up	Primary
12-1176	255	1971-76	Solenoid
12-1175	271	1941-up 74, 1954-up XL 1931-up 45"	Cam
12-1184	275	1941-up Big Twin	Cam Case
12-1185	327	1941-up Big Twin	Gear Case
12-1173	333	1937 UL and 45" 1957-81 XL	Oil Strainer, 10 pack
12-1174	334A	1965-up FL-FXE	Starter
12-1153	358	1970-83	Cam Cover
12-1172	375	1941-up Big Twin	Transmission
12-1166	377	1930-up Big Twin	Cam Cover
12-1177	600	1979-up	Solenoid
12-1178	601	Shifter Cam	Solenoid
12-1160	603	1976-84 Big Twin	Rotor
12-1181	614, 640	1971-Early 75 Big Twin	Solenoid
12-1163	615	1970-78 All	Points
12-1164	620	1970-78 All	Points
12-1162	623	1970-78 All	Points

**Cotter Pins** are zinc plated, sold in 100 pack.

VT No.	OEM	Size
37-8660	510	1/16" — 1/2"
37-8795	511	3/32" — 1/4"
37-8659	512	1/16" — 5/8"
37-9042	515	1/16" — 3/4"
37-8786	528	3/32" — 5/8"
37-8787	531	3/32" — 7/8"
37-8661	534	3/32" — 1"
37-8788	513	3/32" — 1 5/16"
37-8789	550	1/8" — 9/8"
37-8790	559, 520W	1/8" — 1 1/4"
37-8663	566	3/16" — 1"
37-0747	Parkerized	1/16" — 1/2", 50 pk
37-0749	Parkerized	3/32" — 1", 50 pk



# Rivet



**Replacement Fender Rivets** fit all FL front and rear fenders and FX front fenders, 25 pack.

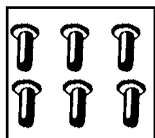
VT No.	Fits
37-6368	Big Twin Fender Brace
37-6369	Big Twin Fender Top
37-6370	FX Front, 1973-up Stainless
37-0938	Inner Primary



VT No.	OEM	Type	Use	U/M
37-8805	—	Short 4-4 1/2	Brake	100 pack
37-8806	41871-31	Long 4-5	Brake	100 pack
37-8807*	8226	Short 7-4	Clutch	100 pack

\*Note: For clutch hub friction disc.

Fiberglass Saddlebag Rivets, pack of 50.			
VT No.	OEM	Length	
37-0566	90965-63	5/16"	
37-0567	90966-67	1/4"	
37-0568	90967-64	3/8"	



# Seal



**Big Twin Left Side Engine Case Seals**

VT No.	#	OEM	Year	Model
7411-2	A	24776-40	1936-54	61-74-80
7411-2T		24776-40	1936-54	61-74-80, V-Twin
14-0965		24031-55	1955-68	OE type
7410-1	C	24031-55	1955-68	Colony
7410-55T		24031-55	1955-68	V-Twin
7410-1-OS		Oversize	1955-68	Colony (+.002)
7410-1-US		Undersize	1955-68	Colony (-.002)
14-0177		Seal only	For above	
14-0185	B	24031-69	1969 only	Big Twin
14-0108	B	12026B	1970-99	Big Twin, 5 pack
14-0580	B	12026-B	1970-99	Big Twin, 5 pack
14-0810	B	12068	2000-up	TC-88
14-0980		12068	2000-up	TC-88

**Note:** 7410-1 and 7410-55T are a screw-in type insert with integral seal. 14-0965 is stock type screw-in without seal. 7411-2, 8211-2 both include seal, spacer & snap ring.

VT No.	OEM	Description
14-0984	61326-95	Top Plate Cork Gasket
14-0985	61381-02	Top Plate Gasket
14-0986	61402-08	Top Plate Gasket
14-0987	61402-02	Top Plate Gasket
14-0988	61402-08	Seal, Top Plate
14-0989	75245-04A	Seal, Fuel Tank
14-0990	75249-04A	Seal, Fuel Tank
14-0991	75301-07	Seal, Fuel Pump, Plate
14-0992	11324	O-ring 7.00 x 1.50 MM
14-0993	11345	O-ring
14-0980	12068	Oil Seal
14-0994	27444-00	O-ring
14-0995	34990-08	Gasket, Chain Inspection
14-0996	62673-90	O-ring FXDS
14-0997	11120	O-ring Dipstick



**Krommets** are available in traditional gold, chrome type or 10 point, 10 pack, 1/4" — 20 thread.

VT No.	Item
37-1954	Star Washer
37-0869	1 3/8" Outside Diameter Rubber Washer for Above
37-0503	Chrome Rocket with Fins
37-0501	Chrome Krommets
37-0502	Gold Krommets

**Krommets** feature 1/4" — 20 studs unless noted for decorative mounting. Available in 5 packs unless noted.

VT No.	Item
37-1100	Chrome
37-9076	Chrome Skull
37-9077	Gold Skull
37-2999	Chrome Skull, large, 5/16" — 18, no stud
37-9096	Chrome Skull, large 1/4" — 20, stud
37-9297	Chrome Skull large 5/16" — 18, stud
37-9218	Skull Valve Stem Cover, pair
37-1529	License Plate Skull Chrome Small, 1 1/8 x 1 1/8
37-1530	License Plate Skull Chrome Large, 1 1/4 x 1 1/4