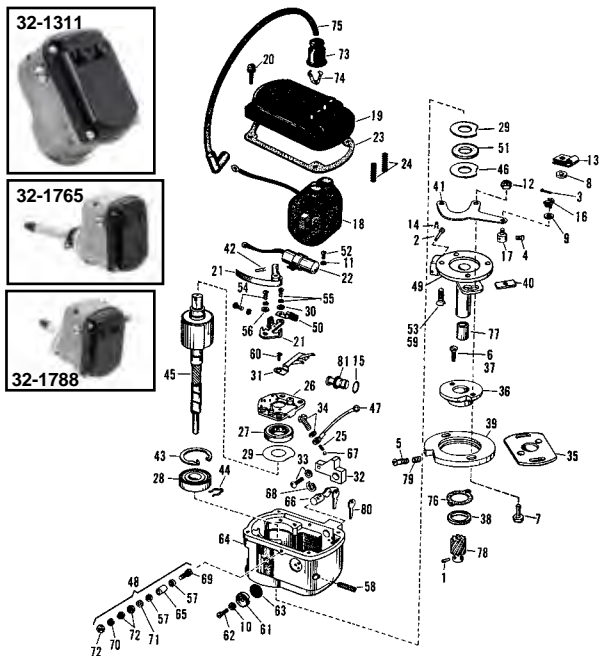


Magneto



- 36-0513 92077-62 Tach Cable 1965-1969
- 32-1348 Adapter Plate Set (3 pc)
- 14-0107 12023 Magneto Base Plate Seal
- 32-0976 Magneto Rebuild Kit
- 32-1045 Tag, Points, Condenser Kit
- 32-1346 Magneto Base and Gear
- 32-1807 Magneto Tach Plug Kit
- 32-0971 Drive Kit
- 32-1057 29534-55A Condenser
- 12-0181 29562-55 Bearing Set
29563-55
- 12-1114 Race
- 13-9208 Coil Springs, 10 pack
- 32-7784 Lighting Capacitor
- 32-0116 Points and Condenser Kit
- 15-1020 Top Gasket
- 15-0972 Magneto Neoprene Cap Gasket
- 32-0064 Screw Kit
- 32-1038 Metal Morse Tag
- 32-1081 Kill Button
- 32-1563 Kill Button Kit, 1959-70
- 32-1082 Bearing Kit
- 32-1102 Drive 1971-80
- 32-1247 Rotor and Magneto Shaft Assembly
- 32-1255 Angle Drive
- 32-1347 Base 1971-80
- 32-1490 Magneto Base
- 32-1664 Adapter Plate
- 32-0823 Cast Base
- 32-1284 Terminal Kit
- 32-1293 Magneto Base Mount Kit
- 32-1345 Magneto Base Kit
- 32-1298 Magneto Body
- 37-1030 Magneto Advance Screw
- 32-1425 Magneto Name Tag
- 32-1314 Insulator Block
- 32-0269 Rotor Kit
- 32-1146 Kill Switch Kit
- 32-1232 Magneto Ignition Points and Condenser Kit
- 32-1453 Kill Switch Kit
- 32-1563 Kill Switch Kit
- 32-1766 Vent Cap Kit (2)
- 32-0283 Magneto Drive Assembly
- 32-1356 Magneto Screw Set

VT No.	#	OEM	Description
32-0029	1	255	Pin, Drive Gear
12-1112	2	491	Pin, Tachometer Plug
37-8660	3	510	Cotter Pin 1/16 x 1/2
32-1027	5	1074W	Screw, No. 8-32 x 7/8 Fillister
32-1029	7	3791	Bolt, 1/4-28 x 3/4 Hex Head (2)
37-1020	8	6107B	Washer, 5/16 x 1/16 x 1/8
37-1021	9	6165	Washer, 3/16 x 3/8 x 1/32
37-1022	10	7010	Lockwasher, No. 6
37-8917			Lockwasher, No. 8, and Screws, 25 pack
37-1024	12	7683	Nut, 1/4-28 (2)
31-1031	13	9958	Clamp, on tappet guide
31-1030		9994	Clamp, on crankcase stud
31-1032	14	11024	Spring Clip, tachometer plug pin
14-0506	15	11110	O-ring, tachometer plug
13-0157	16	27291-32	Spring, wire block
2658-5	17	27450-36	Wire Block, magneto control
32-0716	18	29524-55A	Coil
32-0645	19	29530-55A	Cover, Black, each
32-0644		29530-55A	Cover, Clear, each
32-1564		29530-55A	Cover, Red, each
37-1025	20	29531-55	Screw, magneto cover (4)
32-0119	21	29533-55A	Circuit Breaker Points Set
32-0122	22	29534-55A	Condenser Only
15-0149	23	29550-55	Magneto Cover Gasket
32-1800	26	29561-55	Bearing Support, right hand
32-0026	27	29562-55	Rotor Cam End Bearing
32-0027	28	29563-55	Bearing, rotor shaft end
37-1027	30	29565-55	Contact Screw Washer (2)
32-0028	32	29590-62	Primary Insulator Block Kit for ground
37-1028	33	29591-62	Insulating Block Screw and Washer Set
37-1029	34	29593-62	Ground Wire to Block Screw and Washer
32-1292	35	29600-48	Magneto Base Adapter Plate
32-0646	35	29600-62	Magneto Base Adapter Plate
32-0515	36	29600-65C	Magneto Base Adapter Plate
37-1030	37	29601-48	Magneto Adapter Screw (2)
14-0528	38	29603-48	Timer Seal Ring Housing (5)
32-0516	39	29604-65	Magneto Advance Lower Adapter Plate
37-1031	40	29607-62	Washer, magneto adapter (2)
36-0514			Tach Cable Driven Gear
31-0485	41	29607-65	Magneto Control Arm
31-1033	42	29620-55	Breaker Spring Clip
12-1113	43	29621-55	Rotor shaft end Shaft End Snap Ring
31-1034	44	29622-55A	Rotor shaft end Spring Clip
32-2110	45	29623-55A	Magneto Rotor Assembly with Hex drive
37-1032	46	29624-55	Washer, rotor shaft end
32-0079	47	29625-55	Ground Terminal Wire
32-0080		29625-62	Ground Terminal Wire
32-0081	48	29626-55	Ground Terminal Assembly
32-0082	49	29626-62	Drive Housing and Screws
32-0036	50	29628-55	Wick and Holder
32-0037		29629-55	Breaker Arm Wick
14-0166	51	29630-55	Rotor Shaft End Seal
15-1539		29631-55	Magneto Gasket Kit
37-1033	52	29632-55	Condenser Mount Screw
2884-6	53	29632-66	Magneto Adaptor Plate Screw Kit
37-1035	54	29633-55	Breaker Arm Screw and Washer (2)
37-1036		29633-62	Breaker Arm Screw and Washer (2)
37-1037	55	29634-55	Breaker Arm Contact Screw and Washer
37-1038	56	29635-55	Breaker Arm Washer
37-1039	57	29635-62	Ground Terminal Washer (2)
37-1040	58	29636-55	Coil Set Screw (2)
37-1041	59	29632-62	Taper Screw Set (4)
37-1042	60	29638-55	Safety Gap Plate Screw
32-1002	61	29639-55	Vent Cover
37-1043	62	29640-55	Vent Cover Screw
32-1018	63	29641-55	Vent Screen
32-1229			Mount Kit
32-1019		29642-55	Magneto Housing
32-1801		29642-62	Magneto Housing
32-1022	65	29645-62	Ground Terminal Bushing
32-0073	66	29646-62	Ignition Ground Lock & Keys Kit
32-1037	67	29647-62	Ground Switch Ball
32-1033	68	29648-62	Ground Lock Retainer Clip
37-1046	69	29657-62	Ground Terminal Screw
37-1047	70	29658-62	Ground Terminal Lockwasher
37-1048	71	29659-62	Lockwasher, ground terminal, int. tooth
37-1044	72	29660-62	Nut, ground terminal (3)
15-0154	76	32522-37	Adapter Plate Gasket
15-1031	76	32522-37	Adapter Plate Gasket
10-0717	77	32525-36A	Bushing, drive housing
32-0198	78	32531-36	Drive Gear
32-0077	80	71626-62	Ground Switch Lock Key
32-1034	81	92077-62	Tach Plug and O-Ring

