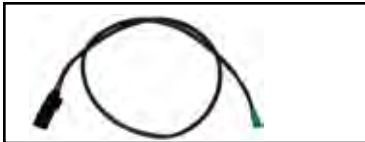


Throttle by Wire "Plug-n-Play" Harness



Throttle-by-Wire "Plug-n-Play" Wiring Harness is a no brainer when adding taller handlebars. It is longer than stock and is one size fits ALL handlebars. Simply remove the OEM harness and plug ours in. It comes complete with OEM connectors installed for simple installation. Fits all 2008-up Touring models. **VT No. 32-6651**



Namz On Board Power Port with dust cover. Plugs into on board diagnostic port. Fits 1994-11 FLT models.

VT No. 32-6579



Headlamp Static Harness.
VT No. 32-1721



Turn Signal Kits.
VT No. Length
32-6672 4"
32-6673 8"
32-6674 12"
32-6675 15"



Front Turn Signal Extension Harness used for installing taller handlebars on all models when keeping turn signals mounted on handlebar switch housings on 1996-12 models.

No crimping required. De-pin factory harness and connector and install new extension harness.

VT No. Extension Over Stock Length
32-6557 4"
32-6558 8"
32-6559 12"
32-6560 15"



Ready to Install Handlebar Extension Harnesses
• All the items needed to successfully extend the wiring to a set of handlebar switches. Harnesses include both male and female Molex terminals crimped on each end. Feature color matching wire as per original harness.

Fit 2011-up FXST, FLST, 2012-up FXD, 2014-up XL
32-6676 +4"
32-6677 +8"
32-6678 +12"
32-6679 +15"

Fit 2007-10 FXST, FLST, 2007-11 FXD, 2007-13 XL
32-6656 +4"
32-6657 +8"
32-6658 +12"
32-6659 +15"

Fit 1996-06 FXST, FLST, FXD, XL
32-6664 +4"
32-6665 +8"
32-6666 +12"
32-6667 +15"

Throttle by Wire Handlebar Wiring Extension Kits includes factory type connectors for easy assembly.
32-6688 +8" 2016-up FLT, FXST, FLST
32-6689 +15 2016-up FLT, FXST, FLST

Wire Clamp



28-0721



28-0710

Nylon Tie Straps, 25 pack

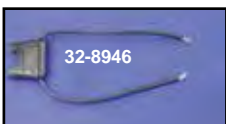
Chrome	Black	Length
25 pack	100 pack	
28-0720	28-0710	4"
28-0721		7"
	28-0711	7 ³ / ₄ "
	28-0712	15 ¹ / ₈ "



36-0614

Chrome Handlebar Wiring Clips snap into handlebars with holes at bends, 10 pack.

VT No. Inner Diameter
36-0613 3/8"
36-0614 1/2"



32-8946



32-0410

In-Line Fuse Holder has 6" long wire leads.

VT No. Type
32-0410 Fuse
32-8946 ATC Type



Vinyl Coated Cable Clamps can be mounted to frame fork or fenders to help route cable wires or brake lines. Mount hole available in 1/4" or to fit #10 screws (.200).

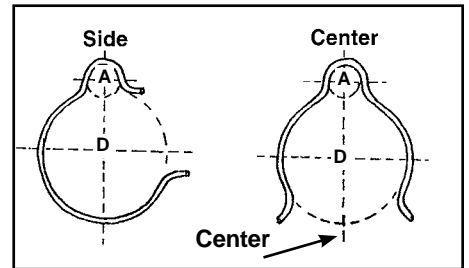
VT No.	Qty.	Inner Diameter	Mt. Hole
37-8128	10	1/4"	1/4"
37-8129	10	3/8"	1/4"
37-8132	10	1/2"	1/4"
37-8904*	25	7/16"	.200"
37-0832	5	3/8"	.200"
37-8905	Each	1/2"	.200"

*Note: Uncoated.



Zinc Plated Strap Clamps with 9/32" hole, sold in 10 pack.

VT No.	U Size
37-9139	7/16"
37-9141	9/16"
37-9142	5/8"



"D" is the diameter of the tube it fits. "A" is the size wire/loom that is secured.



37-8680

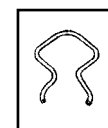
Control Cable and Wire Clamps are zinc plated spring steel, packs of 10.

VT No.	D-Tube Size	A-Wire Size
37-8677	1" Side	3/16"-7/32"
37-8678	1 1/4" Side	3/16"-7/32"
37-8679	1" Center	3/16"-7/32"
37-8680	1" Center	5/16"
37-8681	1 1/8" Center	5/16"



Chrome Billet "G" Clamps to hold wiring or line, 5 packs with 7/16" screw.

VT No.	Clamp Tube Size	Finish
37-1506	1/4" 1 1/16"	Alloy
37-1500	1/4" 1 1/16"	Chrome
37-1501	7/16" 1 1/8"	Chrome



Stainless Handlebar Wiring Clip attaches wire to bars, at stock hole locations or can be drilled, 10 pack.

VT No. 32-0343