



# Lubrication



**Combination Oil Filter Wrench** includes drain plug hex at opposite end.  
VT No. 16-0451



**Swivel-Flex Oil Filter Wrenches** feature gripper teeth and a durable treated band with a vinyl covered flex handle which swivels to clear frame and exhaust obstructions. Replaces 96221-80. VT No. 16-0903



**E-Z Squeeze Bearing Packer.** Patented design greases all tapered bearings with a 5/8" or larger inner diameter Canister holds grease for clean operation.  
VT No. 16-0755



**Seal Puller Tool.** Simply insert the tip of the tool behind the oil or grease seal, press and pull leverage works for you. No more pounding, hammering and digging that might damage bearings. Two size tips reach in and fit nearly all seal applications.

VT No. 16-0838



**Wheel Bearing Greaser.** Fitting and spigot greases 1973-99 tapered bearings without removing seals, use existing seal spacer or purchase separately.

VT No. Item  
16-0803 Tool  
44-0303 Collar



**Grease Fittings.** Special thread.

VT No.	Year	Type	U/M
8770-6	1909-38	Nickel	6 pack
49-0595	1909-38	Nickel	10 pack
44-0533	1938-up	Zinc	10 pack
9864-6	1938-84	Cadmium	6 pack
9897-6	1938-84	Chrome	6 pack
44-0558	1938-up	Nickel	10 pack
37-0511	1938-up	67.5°, Zinc	5 pack
37-0521	1938-up	90°, Zinc	5 pack
49-0688	1936-37	90°	5 pack
49-0636	Cad	Straight	10 pack
49-0637	Cad	67.5°	10 pack
49-0687	Cad	Assortment	20 piece



44-0533



**Oil Drain Reservoir.** 2.5 gallon. Low profile fits under frames on Softail and FLT models.

VT No. 16-0585



**Oil Filter Wrench** use with 3/8" drive.  
VT No. 16-1941



16-0565



16-0566



16-1674



16-0594

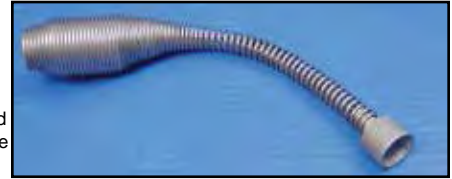
**Grease Kit and Metal Squirt Can.**

VT No. Item  
16-0565 Metal Squirt Oil Can  
16-0566 Squirt Oil Can with flexible nozzle  
16-1674 Grease Kit  
16-0594 500cc Can



**Flat Top Alemite Grease Fitting Adapter** is designed to be used on alemite grease fitting, 0340. Tapped 1/8" NPT to use with standard grease gun.

VT No. Brand/Item  
9929-1 Colony/Adapter  
9929-1T VT/Adapter



**Clone Speed Wrench** allows removal of head bolts on 1936-84 Overhead Valve models, after they are broken loose with wrench.

VT No. 16-0953



**Works Best!**

**Oil Filter Wrench** fits all spin on filters. 3/8" drive. Fits all models and TC-88.

VT No. 16-0743



**Clone Cycle! Original Design by Frank Andrus of New London, Ohio in the mid-1990's.**



**Cable Oiler** directs lubricant into the cable core.  
VT No. 16-0686

# Early Tools



**Tappet Guide Puller** for 1930-73 45 Side Valve, 1930-40 Big Twin Side Valve. Note for use on all Flatheads with screw type valve covers. Replaces 11906-38.  
VT No. 16-1735

16-1735



16-0840



16-0841



16-0842

**Side Valve Tool Kits** includes tool roll.

VT No. Fits  
16-0840 1929-73 45" & Solo  
16-0841 1930-40 SV-VL-ULH  
16-0842 1941-48 SV-VL-ULH



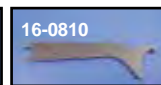
**Clutch Puller and Sprocket Nut Tool Kit** for Knucklehead and clutch Flathead models.  
VT No. 16-0571



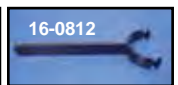
16-0414



16-0805



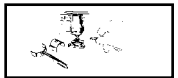
16-0810



16-0812

**Valve Cover Wrenches.**

VT No.	OEM	Type	Years	Model
16-0414	11806-31	Lower, Nut	1929-73	45
16-0805	11806-30	Upper, Nut	1930-38	74 and 80
16-0810	11806-30A	Lower, Hook	1930-38	74 and 80
16-0812	11959-39	Clip Type	1939-48	74 and 80



Adjust tappets so that there is .004" to .005" clearance between intake valve stems and tappets, and .007" to .008" clearance between exhaust valve stems and tappets.



16-0823



49-0366

**Big Twin Countershaft Sprocket Nut Tools** are factory style forged tools.

VT No. Models Use  
16-0823 1941-73 45  
49-0366 1936-40 Big Twin



**Clutch Puller** fits 1936-61 and 1937-40 Big Twins, except VL.  
VT No. 2556-1T