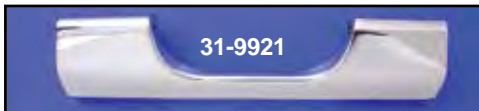
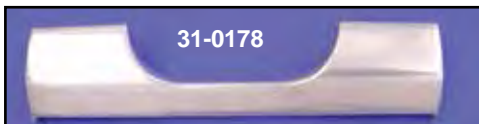
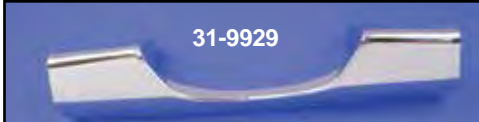
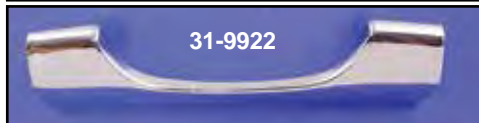
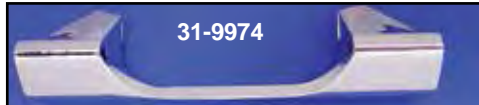
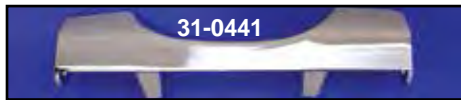
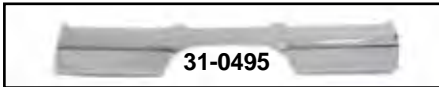
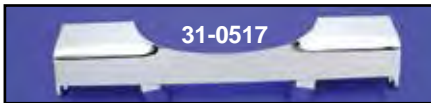
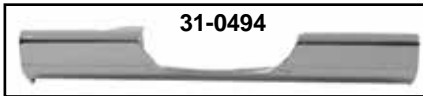




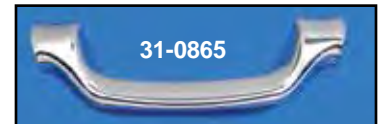
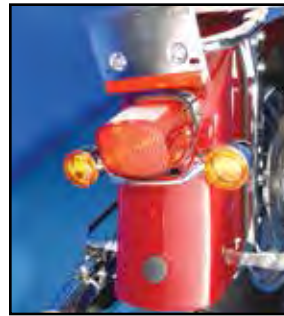
Rear Signal Mount



Chrome Rear Directional Signal Mount Bars. Die cast construction unless noted as steel.

*Note: Polish. **Note: Steel

VT No.	Length	Fits
31-0494**	13"	1974-84 FL 1986-up FLST-FSTN-FLSTF
31-0495**	13"	1987-84 FL 1986-91 FLST
31-3987	13"	1985-90 FLHS-FLT
31-4006*	12 ⁷ / ₈ "	1974-84 FLH, 1986-up FLST 1991-up FLT-FLHS-FLHR
31-2098	12 ⁷ / ₈ "	1974-84 FL
31-9929	10"	1974-84 FL, 1986-up FLST, 1991-up FLHR
31-3935	9"	1985-90 FLHS-FLT
31-9974	9"	1974-84 FL, 1986-up FLST, 1991-up FLHR
31-9922	8 ¹ / ₄ "	1974-84 FL, 1986-up FLST, 1991-up FLHR
31-0441	8 ¹ / ₄ "	1985-90 FLHS-FLT
31-0517**	8 ³ / ₄ "	1974-84 FL, 1986-up FLST, 1991-up FLHR
31-0178*	8 ⁷ / ₈ "	1963-73 FLH
31-9921	8 ⁷ / ₈ "	1963-73 FLH

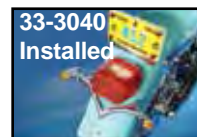


FLT Chrome Rear Turn Signal Bar fits 1999-up models.

VT No.	Type
33-1288	LED
33-3035	Bulb
31-0865	Bracket Only
31-1235	Bracket

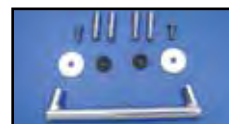


4" Shorter Chrome Rear Turn Signal Mount Bar replaces 68510-74 on FLH, FLST models, is 4" shorter.
VT No. 31-9922



V-Shape Rear Turn Signal Kit fits FLST, FXST, FLH, FLT. Includes red/amber LED bulb lamps.

VT No.	Item
33-3040	Kit
33-0762	LED Lamp Set



Chrome Round Signal Bars include hollow bolts to mount custom turn signals. Fits 1991-04 FLT.
VT No. 31-0329



Chrome Low Boyz Turn Signal Bar replacing 68430-89 and is threaded to accept stock turn signals and mounts to license plate bracket holes.

VT No.	Item	Length	Note:
31-0206	Bar	12"	
31-0776	Bar Kit	7"	
37-0561	End Nuts		
31-1289	Bar Kit	9.72"	
31-0777	Bar	7"	Replacement for 31-0776