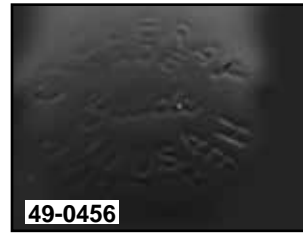


Headlamp



Features Script Guide Logo!

Black Headlamp with Cycle Ray lens and visor.
VT No. 49-1254



7" Diamond Cut Headlamp Assembly with a universal mount to fit all models.

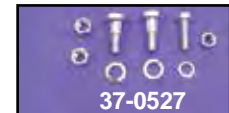
VT No. Finish
33-1539 Chrome
33-1540 Black

Cycle Ray Headlamp is an authentic replica with Guide and Cycle Ray Logos on lamp housing, also included are a chrome rim, reflector and factory style riveting, 6 volt.

- | | |
|---------------|----------------------|
| VT No. | Item |
| 49-0456 | Lamp Black Complete |
| 49-0312 | Lamp Chrome Complete |
| 49-1781 | Lamp Black Complete |
| 49-2511 | Lens Only |
| 48-1478 | Cloth Patch, pair |

Chrome Springer Headlamp to fit OE springer mount brackets.

- | | |
|---------------|-------------|
| VT No. | Item |
| 33-2176 | 6 Volt |
| 33-1925 | 12 Volt |



Visor (VT No. 42-0219) Shown

Stud Mount Headlamp Bracket for custom application.

- | | | | |
|---------------|---------------|--------------|---------------|
| VT No. | Finish | Years | |
| 31-1298 | | 1936-57 | |
| 31-0935 | Parkerized | 1936-57 | |
| VT No. | Colony | Item | Finish |
| 37-0527 | 2776-9 | Bolt Kit | Chrome |
| | 2777-9 | Bolt Kit | Cadmium |



6½" Headlamp Assembly

- | | | |
|---------------|--------------|-----------------------|
| Chrome | Black | Item |
| 33-2029 | 33-2253 | Assembly |
| 33-0942 | | Replacement Reflector |



6" Steel Chrome Headlamps include H-4 unit.

- | | |
|---------------|--------------|
| VT No. | Visor |
| 33-0963 | With |
| 33-0962 | Without |

6"