



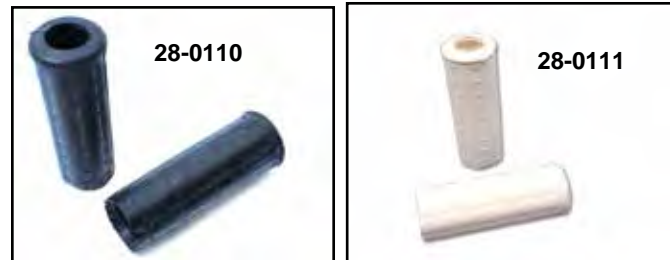
Stock Grip



1962-72 Rib Style Grips.

VT No. Color
 28-0118 Black
 28-0119 White

28-0184 Red
 28-0185 Blue
 28-0186 Yellow
 28-0187 Green



Replica Waffle Handlebar Grips are replacement for 56212-53. on 1949-61, in 1 1/8" x 1 1/8" size or 1974-up late type 1"-1 1/8" size. Available in pairs.

VT No.	Color	Year	Size
28-0159	Black without plug hole	1949-72	1 1/8"
28-0110	Black with plug hole	1949-72	1 1/8"
28-0111	White	1949-72	1 1/8"
28-1985	Black	1974-up	1" and 1 1/8"
28-0121	White	1974-up	1" and 1 1/8"



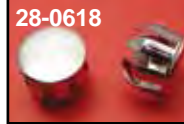
Beck Plastic Grip Set.

VT No.	Color	Year	Size
28-0931	Black	28-0958	Blue
28-0957	Red	28-0959	Yellow
28-0961	White	28-0960	Green

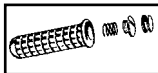


Original Jack Hammer Handlebar Grips include grip. Thick black rubber. 1960's style.

VT No. Type
 35-0071 Grip Throttle
 28-0786 Grip Set with tube
 28-0116 Grip Set
 28-0002 Brown
 28-0003 Red
 28-0004 White
 7/8"
 28-0182 Grip Set
 35-0261 Grip and Throttle



Chrome Handlebar End Plug. Sold in pairs. Plain Chrome, 10 pack
 VT No. 28-0618



1953-61 Grip Hole Plugs are zinc plated with groove, pair. Replaces 56239-53.
 VT No. 28-0625



Heated Handlebar Grip Set fits 1996-up models. Includes end caps. Fits FXST 1996-up FXST, FLST, FXD, XL and 1996-2007 FLT.
 VT No. 28-0589



Chrome End Handlebar Grip Sets feature soft touch grip area with foam or leather covering to reduce vibration.

Available in chrome plated end cap with smooth cap or embossed emblem. Fit 1974-up models.

VT No. Type
 28-0125 Embossed Cap
 28-0124 Smooth Cap
 28-2015 Smooth Cap, Leather
 28-0445 Pebble
 28-0446 Diamond