



Driver Footpeg Support



27-1624



27-1735

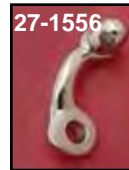
Driver Peg Support Bars are the splined type, less pegs fit 1952-74. Replaces 50948-71 left, 50949-67 right. Use with large female type driver pegs.

VT No.	Finish
27-1624	Zinc
27-1735	Chrome

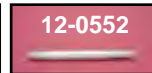


Chrome Forward Control Footrest Support fits XLC models with forward controls.

VT No. 27-0010



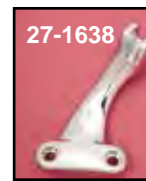
27-1556



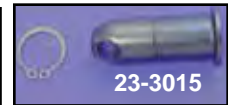
12-0552



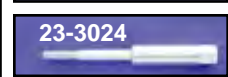
12-2117



27-1638



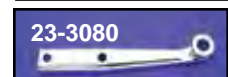
23-3015



23-3024



23-1728



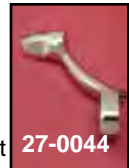
23-3080

Foot Rest Supports and Studs.

VT No.	OEM	Years	Item
Left Side			
27-1556	50948-75	1977-85	Support
12-0552	24752-75	1977-85	Stud
27-1638	50951-90	1991-03	Support
27-0817	42972-04	2004-up	Support
Right Side			
23-3024	34886-86A	1986-90	Stud
27-1577	50949-75	1977-79	Support
12-2117	247751-75	1977-79	Stud
23-3079	42441-90A	1991-03	Peg Clevis
23-3015*	42441-80	1980-90	Pivot-Stud
23-0780	42971-04	2004-up	Support
23-1728	34909-83	1983-90	MC Support Bracket
23-3080	34909-90	1991-03	MC Support Bracket



27-1577



27-0044

*Note: Acts as foot support brake pivot.

Replica Footpeg Mount

Chrome FXR Driver Footpeg Mount Brackets fit 1982-94 all FXR. Use with male style pegs.

VT No.	#	OEM	Type
27-0640	A	50531-81	Right Mount
27-0639	B	50636-81A	Right Extension
27-0638	C	50639-81	Left Extension
27-0641	A,B,C		Three Piece Set



27-0804

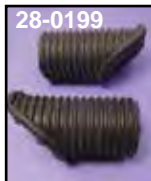
1990-up FXD Driver Footpeg Mount Set.

VT No. 27-0804

Replica Footpeg



28-0201



28-0199



28-0204



28-0202



27-1616



27-1615

Stock Footpeg Rubbers are available in pairs.

VT No.	OEM	Color	Models
28-0201	50940-52	Black	FX-XL Driver large diameter
28-1954	10 pack	Black	FX-XL Driver large diameter
28-0202	—	White	FX-XL Driver large diameter
28-0199	50646-82	Black	FXR Driver
28-0204	33187-63A	Black	FX Passenger
28-0205	—	White	FL Kick 1963-up
28-1953	10 pack	Black	

*Note: Fit black rubber pegs on 1952-89 FX models, on rubber type 28-0201.

Shaker Driver Footpegs are vibration absorbing pegs with chrome end caps. Both male driver pegs are larger diameter. With extra cushion built into the rubber shank.

VT No.	Fits
27-1616	FXR, XL
27-1615	FXST



FX Driver Footpeg replaces 50939-52. Fits 1952-84 K and XL except FXR and 1971-84 FX models.

VT No.	Type
27-1225	Chrome
27-1226	Zinc



27-1215



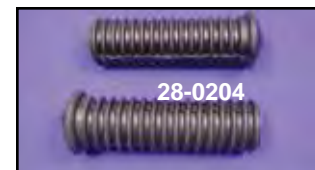
21-0407

Chrome Cap Footpegs are rubber covered with chrome end caps.

VT No.	Item
27-1215	1952-84 Driver, Large Female
21-0407	Shifter Peg, 1/2" Stud



27-1227



28-0204

Replica Footpeg Sets fit passenger 1969-up, 1980-up driver on WG.

VT No.	Style
27-1227	Chrome End Cap
28-0204	Rubber Set Only
37-0020	Bolt Set