



Front Master Cylinder

Front Master Cylinder Assemblies complete with internals and lever, assembled.

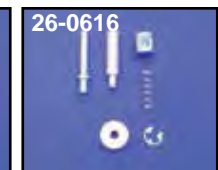
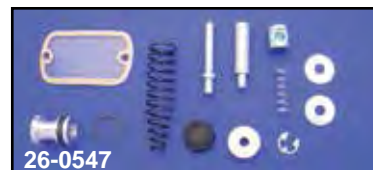
VT No.	OEM	Item	Finish
1972-81			
26-0624	45010-73	Assembly	Chrome
26-2099	45010-73	Assembly	Polish
26-0110	45010-73	Body Only	Raw
26-0513	Vertical	Switch Housing 1973-81	Chrome
26-0631	Horizontal	Switch Housing 1972 only	Chrome
26-0514		Smooth Cover	Chrome
23-1719	45063-72	Rebuild Kit for Above	
1982-95			
26-2145	45013-82A	3/4" Bore, 10mm banjo line	Chrome
26-2153	As Above		Black
26-2120	45019-85	5/8" Bore, 12mm banjo line	Chrome
26-2122	As Above		Black
26-2166	45013-85B	1 1/16" Bore, 12mm banjo line	Chrome
26-2154	As Above		Black
26-2146	45044-82	Clamp	Black
26-2147	45044-82	Clamp	Chrome
26-0400		Screw Kit for Clamp	
32-7782	71574-82	Front Brake Switch	
23-1716	45063-82	Rebuild kit 3/4"	
23-3021	45069-84	Rebuild kit 5/8"	
23-3020	45006-87A	Rebuild kit 1 1/16"	
1996-2003 XL	1996-10 FXST, FLST, 1996-up FXD, FLT		
26-2179	45013-96	Complete 1 1/16" bore, Dual	Chrome
26-2180	45019-96	Complete 9/16" bore, Single	Chrome
23-1714	45006-96	Rebuild Kit 9/16"	
23-1715	45072-96	Rebuild Kit 1 1/16"	
26-2163	45044-96	Clamp	Chrome
2004-06 XL Only			
26-0576	42307-04	Complete, Single	Chrome
26-2201	45052-04	Complete, Dual	Chrome
23-1788	42803-04	Rebuild Kit, Single	
23-1787	42809-04	Rebuild Kit, Dual	
2007-up XL Only			
26-0582	45146-07	Complete, Dual	Chrome
23-0288	42803-07	Rebuild Kit, Single	Chrome
2008-up Touring			
23-1055	44551-08	Dual Disc	Chrome

Rebuild Kit



Handlebar Master Cylinder Rebuild Kits. Each kit contains parts necessary for complete rebuild.

VT No.	OEM	Years	Fits
23-1738	Complete	1972-81	FL
23-1988	Fitting	1972-81	FL
23-1719	45063-72	1972-81	All
23-1739	Complete	1972-81	XL/FX
26-0622	Fitting	1972-81	XL/FX
23-1716	45063-82	1982-85	3/4" Bore
23-3021	45072-87	1985-95	All 5/8" Bore
		1996-up	FXST, FXD, FLT
23-1714	45006-96	1996-2003	XL, 9/16" Bore
		1996-up	FXST, FXD, FLT
23-1715	45072-96	1996-2003	XL, 1 1/16" Bore
		1996-up	FXST, FXD, FLT
23-1787	42803-04	2004-06	XL, Dual Disc
23-1788	42809-04	2004-06	XL, Single Disc
		2007-up	XL
23-1825	42809-07	2007-13	XL, Dual Disc
23-1826	4170087	2014	XL, Single Disc Non ABS
23-1827	4170084	2014-up	XL, Single Disc w/ABS
23-1825	42809-07A	2007-13	XL, Dual Disc
23-1826	4170087	2014	XL, Single Non-ABS
23-1827	4170084	2014-up	XL, Single With ABS
12-0984	11063		Retaining Ring, 1972-81
23-0590	45059-72		Spring Cup
23-0825	45056-77		Piston Cup
28-2002	45042-82		Fluid Level Window, 1982-2005 with seal
13-0152	45071-72A		Plunger Spring 1972-81

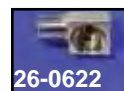
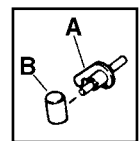


Master Cylinder Plunger Assembly Complete Kit includes all parts pictured. Fits 1972-81.

VT No.	Type
26-0547	W/MC Rebuild
26-0616	Hardware Only

1982-95 Front Brake Pushrod Parts.

VT No.	OEM	#	Item
26-2141	Kit		A&B Rod Barrel Set
	45051-82	A	Pushrod
	45031-82	B	Pivot Barrel
26-2139	45031-82	B	Pivot Barrel



Brake Hose Fittings for front master cylinder, chrome.

VT No.	OEM	Model	Type
26-0622	43307-78	FX-XL	Angle
23-1988	63609-72	FLH	Straight
23-0517			Converts 10mm late threads to 1/8" NPT with inverted flare, early thread hose type, straight.