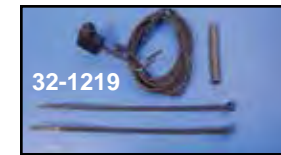


1996-up Lever Assembly



26-2212
26-2211

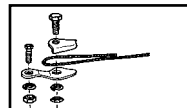
Chrome Clutch Handle Assembly includes mount bracket, clamp and handle, assembled.

VT No.	Fits
26-2158	1996-14 FXST, FLST; 1996-up FXD; 1996-07 FLT
26-2205	2006-13 FLT
26-2158	1996-03 XL
26-2182	2004-2006 XL
26-2204	2007-13 XL
26-2211	2014-up XL
26-2212	As Above Black
32-1219	Switch; 1996-10 FXST, FLST, 1996-09 FLT, 1996-11 FXD, 1996-03 XL



Black Leather Accessories.

VT No.	Description
48-0550	Lever Covers
48-1714	Lever Covers with 16" fringe



Brake Cable Clamp is a universal style clamp.
VT No. 26-0508



Chrome Lever Pins are allen style for pivot point on 1982-14 FXST, 1986-14 FLST, 1991-14 FXD, 1982-07 FLT and 1982-03 XL.

VT No. 37-8823



Cable Clamp fits to hand lever for emergency or permanent use. Easy to install .460" diameter, 1 pair.

VT No. 26-0509



Allen Screw Set for Lever Clamp is a four piece set for 1965-72 levers.

VT No. 8797-4

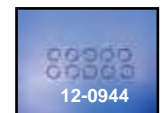
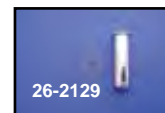
1996-up Type Clutch Lever Bracket includes 2 halves.

VT No.	OEM	Finish	Fits
26-2184	38608-96	Chrome	1996-14 FXST, FLST, 96-03 XL, 1996-up FXD, 1997-07 FL
26-2186	As Above	Black	As Above
26-2163	45044-96	Chrome	1996-14 FXST, FLST; 1996-13 FLT; 1996-up FXD 1996-2003 XL

2004-13 Chrome Pieces for XL's.

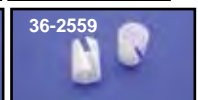
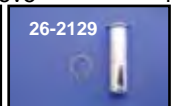
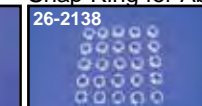
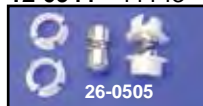
VT No.	OEM	Item	Fits
26-2194	42807-04	Clamp/Bracket	2004-13
26-2195	38671-04	Bracket	2004-13
26-2196	42807-04	Lever Pin	2004-13
26-2198	45799-04	Spring	2004-13

Lever Control Hardware



Hand Lever Pivot Pins for brake and clutch sides.

VT No.	OEM	Item	U/M
26-1979	45032-82	1982-14 Pin	5 pack
26-0507	45031-65	1965-81 Pin and Clip	10 pack
26-0544	—	1965-81 Pivot Pin Set w/grease fitting	
12-0939	11036	Clip for Above	10 pack
26-2129	45032-82	Pin 1982-14	Each
12-0944	11143	Snap Ring for Above	10 pack



Lever Pins/Bushings

VT No.	OEM	Item	Year	U/M
26-0505	45036-68	Bushings	1968-87	10
26-2138	45039-68	Nylon Bushing	1968-87	25
26-2129	—	Pin	1982-14	Each
26-1979	—	Pin	1982-14	5
26-2132*	45036-88	Bushings	1988-up	Each
36-2559	45423-92	Lever Bushings	1992-up	10

*Note: Teflon pin fits 1988-up eyelet clutch cables