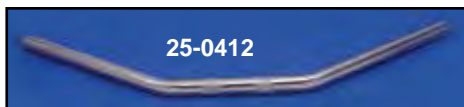
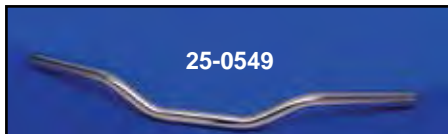
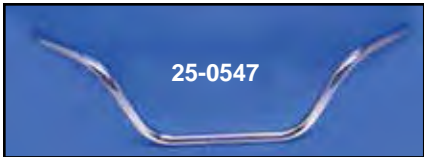
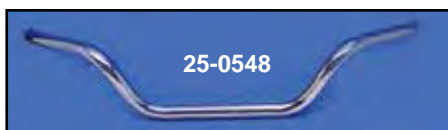




1" Handlebar



| Style | W/O Indent Chrome | With Indent | Width | Rise | Pull Back | Center Width |
|---------------|-------------------|-------------|-------|------|-----------|--------------|
| High Buckhorn | 25-0530 | 25-0546 | 33" | 9" | 11" | 8.5" |
| Med Buckhorn | 25-0520 | 25-0547 | 33" | 7" | 7.5" | 10" |
| Low Buckhorn | — | 25-0548 | 32" | 3.5" | 10" | 8.5" |
| Superbar | 25-0660 | 25-0549 | 29" | 2" | 5" | 5.5" |
| | | 25-0443* | 29" | 2" | 5" | 5.5" |
| High Chopper | 25-0650 | 25-0550 | 24.5" | 6" | 15" | 6" |
| Low Chopper | 25-0630 | 25-0551 | 23" | 6" | 13.5" | 5" |
| Drag Bar | — | 25-0412 | 28.5" | | 5.5" | 8.5" |
| | | 25-0442* | 28.5" | | 5.5" | 8.5" |
| | | 25-0445* | 29" | 6" | 13" | 7" |

Note: All 1982-up handlebars with indents are for external wiring only.

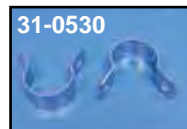
*Note: Denotes without knurl

Cross-Bar



Speedster Style Bar features wide format and will accept cross bar VT No. 49-2607 which may be ordered separately.

| VT No. | Type |
|----------|-------|
| 25-0406 | FX-XL |
| 25-0409* | FXSTS |



Replica Chrome Cross Bar Kit includes fluted tube and 2 stainless clamps. For FLH models.

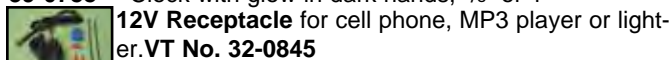
| VT No. | Item |
|---------|----------------|
| 49-0153 | Cross Bar |
| 31-0530 | Clamp Set Only |

Handlebar Accessory



Chrome Billet Handlebar Assemblies fit 7/8" or 1" handlebars.

| VT No. | Item |
|---------|---|
| 39-0785 | Clock, 7/8" or 1" |
| 39-0786 | Outside Temperature Gauge, 1" |
| 39-0788 | Clock with glow in dark hands, 7/8" or 1" |



Chrome Electronic Device Holder mounts to left side control clamp on 1996-up models.

VT No. 31-1233



Weighted End Inserts fit the inner diameter of 1" handlebars to reduce vibration at bar ends. Inserts are made of brass.

VT No. 28-0629



Universal Cigarette Lighter available for panel mounting.

| VT No. | Finish |
|---------|---------------------|
| 33-0561 | Chrome |
| 33-0562 | Chrome with bracket |



Chrome Coin Holder clamps to handlebars with a clip for dollars. Great for tolls.

VT No. 48-0644