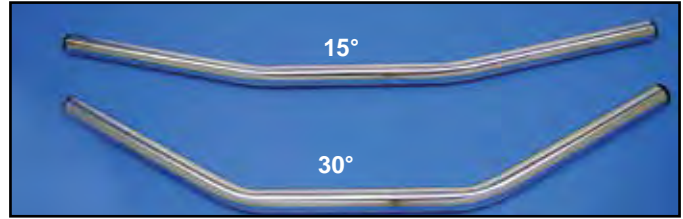
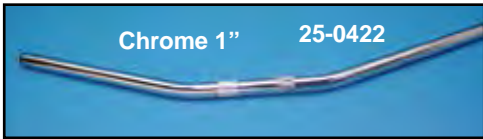




1" Drag Handlebar



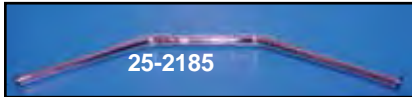
1" Wide Drag Bars feature knurls at riser area. Available with or without indents.

Chrome	Black	Type	Width
25-0422	—	Smooth	32"
25-0424	—	Indent	32"
25-0423	25-0458	Smooth	36"
25-0425	25-0459	Indent	36"

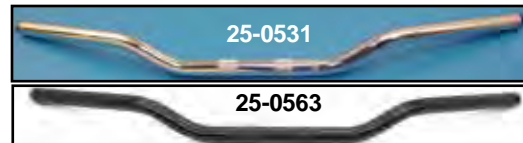
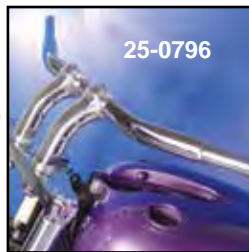
1" Drag Bars sweep back angle style with 15 or 30 degree bends and 30" overall width.

Chrome	Black	Sweep
25-0539	25-0561	15°
25-0540	—	30°
25-0544	25-0456	15° indented
25-0879*	—	15° indented *Note: without knurls.
25-2144	—	30° indented
25-2215	—	Indented
25-2216	—	30° indented

1 1/4" Bars



Buffalo Drag Bar features 30 1/2" width.
VT No. **O.D.**
 25-2185 1.25"
 25-0796* 1.25" *Note: without knurls.
 25-0658 1.50"



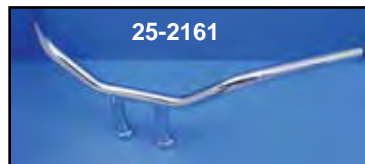
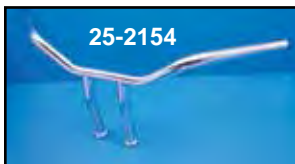
2" Rise Drag Bars offer the pullback style yet, retain the drag bar look. Measure 8" across riser, 2" rise, 7 1/2" grip, 31 3/4" across, 1" diameter.

Chrome	Black	Indent	Knurl	Grip
25-0531	25-0563	Without	Yes	31 3/4"
25-0666	25-0564	With	Yes	31 3/4"
25-0847	—	Without	No	31 3/4"
25-0727	—	With	Yes	29 3/4"
25-2216*	—	With	Yes	28 1/4" *Note: 2 1/2" rise



VT No. 26-0585 Buffalo Riser Set
 Shown with
 25-0531 Bar

1" Riser Bar



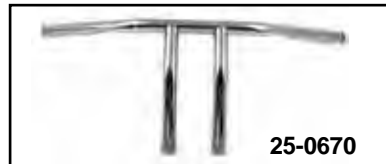
Riser Bars are available with indents for 1982-up models or without indents, feature 3 1/2" center to center, to accept 1/2" - 20 thread bolts.

With Indents	Without Indents
25-2152 5"	25-2161 5"
25-2153 7 1/2"	25-2162 6"
25-2154 9"	25-2163 8"



1 1/4" Chrome Knucklebars are pre-drilled for internal wiring. Feature 30" width with a 4.5" pullback. Fits custom springer front end applications.

VT No. 25-0230



1" Pullbacks bolt to 3 1/2" bolt centers, mounts with 1/2" - 20 bolts. Grips 22" apart.

With Indents	Without Indents	Rise
25-0669	25-0536	4"
25-0670	25-0537	6"
	25-0575	8"