



Intake Manifolds



Stock Intake Manifolds for XL's are of cast alloy as original.

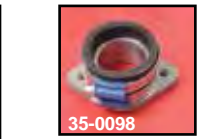
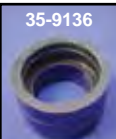
VT No.	OEM	Fits	Type
35-0085	27021-71A	1966-77	O-Ring
35-0084	27021-78	1978-84	Flat Seal
35-9188	27004-88A	1988-03	Spigot
35-9195	27024-04	2004-06	Spigot

Manifold Spacer replaces 29250-78 on 1971-88 models. $\frac{3}{8}$ " thick.

VT No.	Item
15-0141	Stock Spacer, each
15-1019	As Above, James
15-0142	Gaskets, Non-beaded
15-1144	Gaskets, Beaded
15-1019	Spacer Kit, James ($\frac{1}{4}$ " inner diameter) Stock
15-1162	Spacer Kit, James ($\frac{1}{16}$ " inner diameter) Custom



CV Carburetor Adapter adapts HSR-42 Mikuni or CV carburetor to 2 bolt manifold. Use spigot seal VT No. 14-0180.
VT No. 35-9150



Carburetor Adapters.

VT No.	Size (mm)	Type
35-9136	30-45	Spigot Rubber
35-0117	42-42	Spigot Rubber
35-0194	44-44	Spigot Rubber
35-4574	36-38	Flange Adapter
35-9162	40	Flange Adapter
35-9340	42	Flange Adapter
35-9341	46	Flange Adapter
35-0098	38	2 Bolt Adapter w/rubber
35-0088	38	Flange



Manifold for Evolution converts stock rubber compliance fittings to a more rigid mount system. This manifold is included in super kit for Evolution. Order flange kit separately.

VT No.	Item	Brand
35-8021	Manifold	S&S
35-8033	Manifold	Sifton
35-0161	Flange Kit	
35-9150*	Flange Adapter	
37-0410	Spacer	

***Note:** Use on 1990-up to attach CV carburetor on XL



S&S Manifolds are replacements for all S&S $\frac{1}{8}$ " Super carburetors or can be used as stock replacements.

VT No.	Type	Model
35-0101	O-Ring	1957-77 models
35-0109	As Above	With .200 longer cylinder
35-0102	Flat Seal	1978-84
35-9184	As Above	With .200 longer cylinder
35-8021	Flat Seal	1986-up XL Evolution



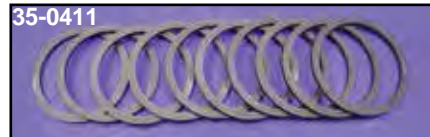
Carburetor Spacers for S&S are available in 1" or $\frac{3}{8}$ " thickness for spacing out $1\frac{1}{8}$ " carburetors on models with 5 gallon tanks.

VT No.	Size
35-0105	1"
35-0086	$\frac{3}{8}$ "
14-0957	Super 'E' Carburetor Base, O-Ring



Intake Manifold Chrome Allen Mount Screws.

VT No.	Year	Model
9932-8-P	As Above	Polished
9933-12	1986-87	XL
9933-12-P	As Above	Polished



1966-77 Intake Manifold Rings use to update early style O-Ring intake manifolds or cylinder heads to late style flat band type seals. Available for stock or stroker .200 taller cylinders. Set includes 4 standard and 2 stroker rings.

VT No.	Type	Qty
35-0411	Adapter Rings, Stock	10
35-0412	Stroker Rings	10
35-0429	Set	

For EFI



Chrome Manifold Cover fits 2007-up XL.

VT No.	Item
34-0100	Kit
15-1527	Gasket