



Wiring Harness



Note: Order the appropriate factory service manual to facilitate wire harness installation.

Wiring Kits feature plastic covered wires. All 1970-99 harness are available as complete "builders kit" with main harness, handlebar, tail lamp and starter wires, or as main harness.

XLH Electric Start 1970-99.

Complete Kit	Main Harness	OEM	Application
—	32-9206	Starter	1967-80 XLH
32-7617	32-9010	70151-70	1970-72 XLH
32-7618	32-9059	70151-73	1973-74 XLH
32-7619	32-7554	70006-75	1975-76 XLH
32-7620	32-9304	70006-76	1977-Early 1978 XLH
32-7621	32-9209	70006-79	Late 1978-79 XL-XLS
32-7622	32-9210	70006-80	1980 XL-XLS
32-7623	32-9211	70006-81	1981 XL-XLS
32-7624	32-9212	70006-82	1982-E84 XL-XLS
32-7625	32-0721	70135-84	1984-85 XL-XLS
32-7626	32-0722	70135-86	1986-90 XL-XLS
—	32-8929	70135-92A	1992-93 XLH
—	32-8937	70135-97	1997 Standard, Hugger
—	32-8939	70135-98	1998-99 Standard, Hugger

See BT Section.

Taillight Wires.

PVC Covered Taillight Wires 1970-up.

VT No.	Fits
32-9309	1970-72 XL-XLCH
32-9312	1973-77 XL, XLCH, 1982-84 XL
32-9313	1978 XL-XLCH
32-9314	1979-81 XL

Accessory Kits.

VT No.	OEM	Type
32-9206	—	1967-80 XLH Small Starter Wire Set, PVC
32-0323	70018-77	Relay to Solenoid Wire
32-0158	70169-70	Relay to Ground Wire
32-0163	70165-58	Battery Box to Ground 1965-69 BT



VT No.	Length
28-0720	4"
28-0721	7"



Electrical Terminal Plates are pre-assembled for main junction which includes studs for mounting coil and auxiliary junction for headlamp wiring on 1970-74 XL headlamp. Replaces 72303-70. **VT No. 9817-15**

XLCH Kickstart 1970-79.

Complete Kit	Main Harness	OEM	Application
32-7610	32-9283	70153-70	1970-E71 XLCH
32-7611	32-7577	70153-71	L1971-72 XLCH
32-7612	32-7578	70153-73	1973-74 XLCH
32-7613	32-0671	70001-75	1975-76 XLCH
32-7614	32-9305	70001-76	1977 XLCH
32-7615	32-7579	70001-78	1978 XLCH
32-7616	32-7580	70001-79	1979 XLCH

Auxiliary Harness

32-9206	Starter Wire Set	1967-80
----------------	------------------	---------



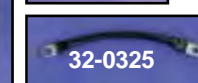
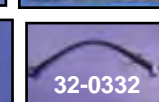
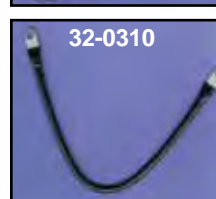
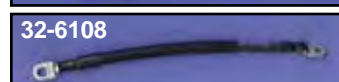
1952-69 Wire Harness Kits feature cloth covered, color coded wire as original.

XLH Battery Type 1952-67

VT No.	OEM	Application
32-8011	70320-59	1959-64 XLH, 6 Volt
32-7556	70320-65	1965-66 XLH, 12 Volt
32-7557	70320-67	1967 only XLH, Electric Start
32-7559	70320-68	1968-69 XLH, Electric Start

XLCH Magneto Type 1958-69

VT No.	OEM	Application
32-9057	70320-58	1958-64 XLCH
32-9058	—	1965-69 XLCH



Battery Cables are replacements of the originals with heat shielded terminal ends.

VT No.	OEM	Length	Application
Negative			
32-0325	70011-81	8"	1981-85 All XL
32-0311	70097-75A	10¾"	1986-96 XL, Pos. 1975-79 XLH, 1979 XL
32-0324	70235-67A	9"	1967-72 XLH Braided
32-0363	70235-67A	8.5"	1967-72 XLH Braided
32-0312	70295-70	6¾"	1970-78 XLCH
Positive			
32-0315	70083-82A	15¾"	Pos. to Solenoid 1982-88 XL
32-0332	70076-89A	14¾"	Pos. to Solenoid 1989-96 XL
Miscellaneous			
32-0310	70069-65B	15½"	Solenoid to Battery & Starter 1967-75 XLH, 82 XL

2 Gauge Cables.

32-2011	11" & 16"	1981-2003 (Set)
32-2012	12" & 13"	2004-up (Set)