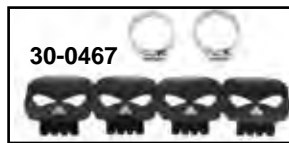


Universal Heat Shields include clamps for installation.

VT No. #	Type	Dia.	Length
30-0109 A	Perforated	1 3/4"	9"
30-0106 B	Smooth	1 3/4"	7"



Skull

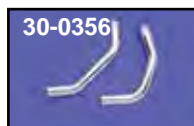
Chrome Black	Dia.	Length
30-3385 30-0466	2 1/4"	9"
30-3386 30-0467	2 1/4"	12"
30-0468 30-0471	1 3/4"	9"
30-0470 30-0472	1 3/4"	12"

Flame

Chrome Black	Dia.	Length
30-0118	1 3/4"	8"
30-0117	1 3/4"	11"
30-0481 30-0483	1 3/4"	9"
30-0482 30-0484	1 3/4"	12"
30-0473 30-0479	2 1/4"	9"
30-0478 30-0480	2 1/4"	12"

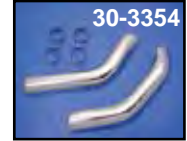
Chrome Heatshield Set fits 2004-2013.

VT No.	Type
30-1167	Holes
30-0356	Smooth



Heat Shield Set fits 1 3/4" stock or drag pipe sets, fits 1957-84 XL except 1979. VT No. 30-0082

Heatshield



30-3360 1986-2003 on Bike

Chrome Exhaust Pipe Heat Shields.

VT No.	Type	Style
1957-84		
30-0099	Front	Stock/Drags
30-0100	Rear	Stock/Drags
30-3218	Rear	Stock/Drags
30-0127	Set	Cycle Shack Drag & Muffler for 1957-85
1986-2003		
30-3360	Set	Drag Pipes
2004-up		
30-0356	Set	Drag Pipes



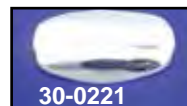
Front Muffler Chrome Pipe Junction Shield fits 1984-2003 XL. VT No. 42-0523



Universal Straight Heat Shields are available for 1 3/4" or 2 1/4" pipes. Includes mounting clamps. Sold individually.

For 2 1/4" Pipes

30-0120	4"
30-0121	10"
For 1 3/4" Pipes	
30-0122	10"
30-0123	12"
30-0124	18"



Chrome Heat Shield includes 2 clamps.

VT No.	Length
30-0221	5 1/2"
30-0245	9"



Chrome Pipe Shield for 1983-85 XL-XLS models. VT No. 42-0521