



**10mm Russell Street Legal Universal Brake Lines.** Build it yourself line assemblies ready for adapter fittings. Preassembled with high performance #3 stainless braided hose with a rugged Teflon® inner and crimp-on chrome plated female swivel hose ends. Clear coated for abrasion resistance. Meets the guidelines of the D.O.T. MVSS-106 requirements and are 50-state legal. Compatible with all brake fluids.

VT No.	Length	VT No.	Length	VT No.	Length
23-8352	4"	23-8120	32"	23-8282	58"
23-8002	6"	23-8130	34"	23-8229	60"
23-8010	9"	23-8342	36"	23-8332	62"
23-8020	12"	23-8140	38"	23-8312	64"
23-8030	15"	23-8242	40"	23-8322	66"
23-8362	16"	23-8150	42"	23-5833	68"
23-8040	17"	23-8252	43"	23-5835	72"
23-8212	18"	23-8262	44"	23-5836	74"
23-8050	19"	23-8192	45"	23-5840	80"
23-8060	21"	23-8372	46"		
23-8070	23"	23-8160	47"		
23-8080	25"	23-8202	50"		
23-8090	26"	23-8170	52"		
23-8100	28"	23-8180	54"		
23-8110	30"	23-8272	56"		



**Hydraulic Brake Switch** features heavy duty contacts and quality brass terminals for 1951-up models.

VT No.	Type	Brand
32-0425	Screw	V-Twin
32-0426	Flag	V-Twin
32-0434	Screw	Accel
32-0435	Flag	Accel
32-0443*	Flag	V-Twin



**Front Chrome Brake Line Clamp** fits under triple tree to secure stainless brake line. 1/4 x 20 mount hole.

VT No.	Type
23-0675	A
23-0686	B

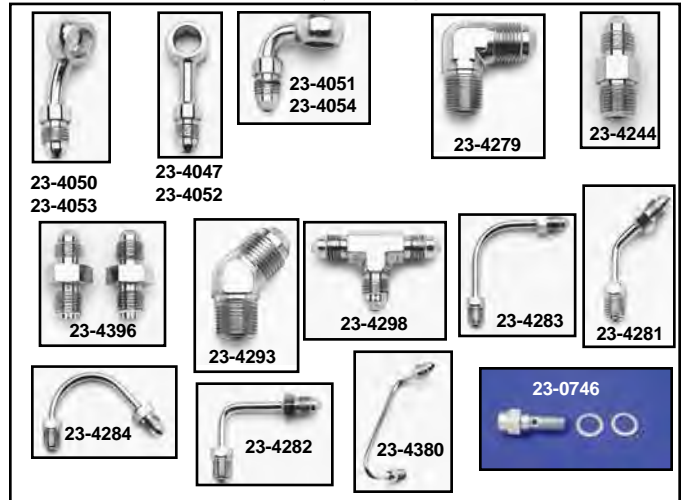


**Brake Hose Fittings.**

23-4306	Front Wide Glide Junction Block
23-4307	Front Narrow Glide
23-4305	90° long forward control banjo, 10mm
23-4303	35° short rear brake banjo, 10mm
23-4304	90° short rear brake banjo, 10mm

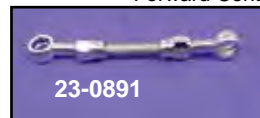
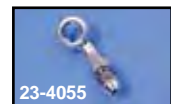
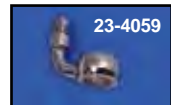


# Brake Fitting & Bolt



**Chrome Adapter Fittings** see listing for application. Sold as each, unless noted. \*Note: Most common use

VT No.	Fitting Type Adapts To:
23-4047	10mm Banjo, straight
23-4050	10mm Banjo, 35°
23-4055	10mm Banjo, 45°
23-4051	10mm Banjo, 90°
23-4052	7/16" Banjo, straight
23-4053	7/16" Banjo, 35°
23-4056	7/16" Banjo, 45°
23-4054	7/16" Banjo, 90°
23-4057	12mm Banjo, straight
23-4058	12mm Banjo, 35°
23-4059	12mm Banjo, 90°
23-4244	1/8" Male NPT, straight
23-4279	1/8" Male NPT, 90°
23-4293	1/8" Male NPT, 45°
23-4298	Male "T"
23-6033	Flare Union
23-6034	3/8 x 24 Banjo Bolt
23-6035	7/16 x 24 Banjo Bolt
23-6040	10mm x 1.25" Banjo Bolt
23-6041	12mm x 1.25" Banjo Bolt
23-6036	3/8 x 24 Double Banjo Bolt
23-6042	10mm x 1.25" Double Banjo Bolt
23-0746	3/8 x 24 Brake Switch Banjo Bolt
23-6037	35° Rear Banjo, 10mm
23-6038	90° Short Rear Banjo, 10mm
23-6039	90° Long Forward Control Banjo, 10mm
23-4396	3/8-24 Male Inverted Flare, straight, 2 pack
23-4380	3/8-24 Male Inverted Flare, 90° & 120°
	*Junction block to master cylinder
23-4281	3/8-24 Male Inverted Flare, 45°
	*Rear Calipers
23-4282	3/8-24 Male Inverted Flare, 90°, short
	*Junction Block to Front Caliper
23-4283	3/8-24 Male Inverted Flare, 90°, long
	*Junction Block to Front Caliper
23-4284	3/8-24 Male Inverted Flare, 150°
	*Forward Controls



**Double Banjo Brake Line** use with 10mm bolt.

VT No.	Item
23-0891	Line
23-0612	Bolt
23-0688	Junction