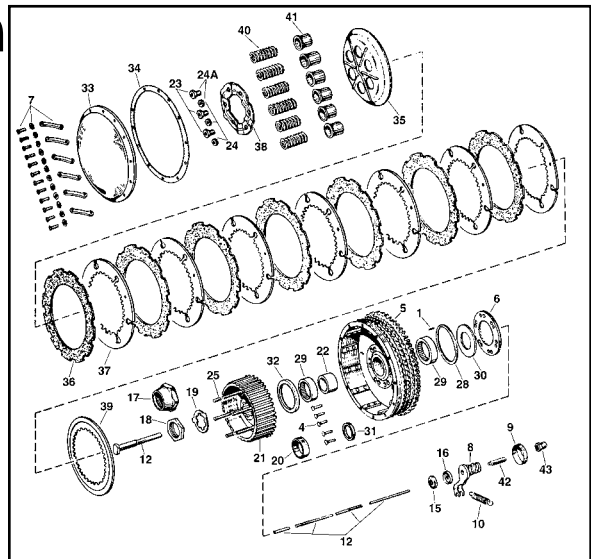
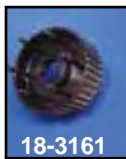
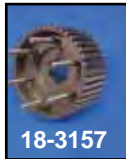




1970 & Earlier XL Clutch

1970 and Earlier Clutch.

VT No.	#	OEM	Item
17-1111	4	8215	5/32 x 13/16 x 9/32 Rivet
18-3640	5	33162-67	Starter Ring Gear
17-1116	6	33379-57	Starter Ratchet 9T
18-2331	7	34897-53	Screw Retainer
18-1140	8	37201-54	Release Worm and Lever
18-1138	9	37210-47	Release Worm Cover
13-0137	10	37222-52	Worm Lever Spring
17-1158	12	37279-56	Release Rod Set 56-66 XL's 1967-69 XLCH
17-1157	12	37280-67	Release Rod Set 1967-69 XLH, 1970 XLCH
14-0125	15	37339-53	Release Rod Oil Seal
N/A	16	37345-52	Release Rod Oil Seal Ret.
12-0539	17	37526-56A	Clutch Hub Nut
12-0540	18	37527-67A	Clutch Hub Nut
17-0912	19	37533-52A	Clutch Hub Lockwasher
17-0090	20	37535-52	Clutch Hub Spacer
18-3157	21	37556-57B	Hub Assembly, 1957-69 XLCH
18-3161	21	37557-67	Hub Assembly, 1967-70 XLH, 1970 XLCH
18-3164*			Nuts for Above *Note: Required
12-0372	22	37568-67	Clutch Hub Bearing Inner Race
12-0510	23	37581-52	Large Hub Stud Nut
12-0574	24	37582-52	Small Hub Stud Nut
12-0551	24A		Nut Set 3 each, #23 & #24
18-8232	25	37584-64	Clutch Hub Stud (6) 1964-66
18-3123	25	37584-67	Clutch Hub Stud (6) 1967-70
17-0091	28	37721-54	Sprocket Hub Washer
12-0328	29	37722-52	Clutch Sprocket Needle Bearing
17-0020	30	37731-52	Washer, Sprocket Bearing, 0.0955" thick
17-0021	30	37732-52	Washer, Sprocket Bearing, 0.0975" thick
17-0022	30	37733-52	Washer, Sprocket Bearing, 0.0980" thick
17-0024	30	37735-52	Washer, Sprocket Bearing, 0.0925" thick
17-0023	30		Washer Sprocket Bearing, 0.1010" thick
17-0092	30		As Above Assortment, 1 each of above
14-0128	31	37740-57	Clutch Hub Oil Seal, Kick Start
14-0129	32	37741-67	Clutch Hub Oil Seal, Electric Start
18-3637	33	37760-52	Clutch Cover
15-0212	34	37762-52	Clutch Cover Gasket
18-3635	35	37876-52	Releasing Disc
18-1113	36	37985-52A	Friction Plate Raybestos (7)
18-1115	37	37992-52	Drive Plate (7)
18-1141	38	38013-52	Pressure Plate
18-1116	39	38016-52	Backing Plate
13-0140	40	38076-52	Spring (6)
18-3642	41	38101-52	Backing Plate, Spring Cup (6)
18-1139	42	38130-54	Adjusting Screw
12-0519	43	38135-50	Adjusting Screw, Locknut



Assembly Order Illustration



Clutch Rod Installation for 17-1166 and 17-1165. VT No.

Year	Models	VT No.
17-1158	1956-66 XLH	
	1967-69 XLCH	
17-1157	1967-69 XLH	
	1970 XLCH	



Early XLH & XLCH Sprocket Cover. Kick and electric with starter cut out. Replaces 34871-67B, kick only replaces 34782-57A on 1952-70 Sportsters. Complete cover assembly includes cover, release worm adjuster screw, nut, oil deflector, spring and kicker spring stud.

VT No.	Type
43-0114	Polished Kick & Electric Cover
43-0135	Polished Kick Cover Only
43-0136	Chrome Kick Cover Only
43-0115	Chrome Kick and Electric Cover

18-1211	Release Kit
8886-2	Stud, Chrome
8887-2	Stud, Cadmium

Stock Sprocket Kick Starter Cover Screws

VT No.	Years	Type/Finish
8884-2	1954-70	Chrome
8885-2	1954-70	Cadmium
8886-2	1952-70	Pipe Mount Stud
8887-2	1952-70	As Above, Cadmium



1952-67 XLCH Cast Sprocket Cover features early Rib design, includes worm and hardware, replaces 34874-52A.

VT No. 43-0133

Rubber Cable Oiler Boot replaces 38690-55, for XL 1955-80. 5 pack.

VT No. 28-0401

Replica Clutch Adjuster Sleeve. Fits 1954-71, 7/16" hole levers. Zinc plated.

VT No. 37-8460



1954-70 Clutch Release Kits. VT No. 18-1211

1954-70 Clutch Release Parts.

VT No.	OEM	Part
18-1211		Kit
18-1138	37210-47	Cover
18-1139	38130-54	Screw
12-0519	38135-50	Nut
18-1140	37201-54	Worm
13-0137	37222-52	Spring (10)



1952-70 Clutch Cable with adjuster.

VT No.	Item
36-0406	Cable Assembly
37-8460	Adjuster Only, Zinc
2576-1	Adjuster Only, Cadmium