



Kick Pedal and Arm



Kick Starter Arms are constructed of forged steel for durability for 1954-84 FX-FL.

VT No. OEM Finish Type
17-0309 Kit Complete

Includes heavy forged offset kick arm VT No. 17-0308, kick pedal 17-0301 and necessary hardware for easy installation.

- 17-0308 33052-71 Chrome Heavy
- 17-0310 As above Stainless Heavy
- 17-0018 As Above Chrome Standard
- 17-0322 33052-71 Black Polished
- 17-0344 Natural Replica Black
- 17-0601 Bolts Chrome Kit
- 17-0602 Bolts Chrome Kit



Alloy Billet Kick Starter Pedals.

- VT No. Style
- 17-0386 Knuckle
- 17-0765 Maltese
- 17-1491 Knuckle Only Alloy
- 17-0359 Polished Alloy Assembly
- 17-0355 Bronze Assembly

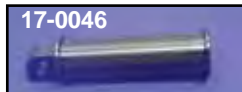


Red Baron Billet Kick Starter Pedal includes chrome axle shaft.
VT No. 17-0651



Flat Kick Starter Pedals available in O-Ring or Rail design.

- VT No. Type
- 17-0299 O-Ring
- 17-9150 Rail



Spool Kick Starter Pedal. Order bolt kit separately.



- Chrome Black Style**
- 17-2124 17-0046 Smooth
- 17-0461 17-0459 Holes
- 17-0957 Hex



Brass
17-0343 Holes



Kick Starter Return Spring for all 1954-79.

- VT No. OEM Finish
- 13-0122 33084-41 Chrome
- 13-9248 33084-41 Black



Stroker Kick Starter Arm Kit includes I Beam, 1" longer chrome kicker arm with chrome rail type buffalo kick pedal and hardware.

- VT No. Item
- 17-9921 Complete kit
- 17-0160 Arm only
- 17-9150 Pedal only



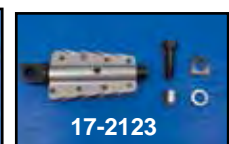
Chrome Fold-Out Kick Starter Arms for 1977-79.

The 17-9934 features flat kicker pedal that spins.

- VT No. Type
- 17-0307 Stock
- 17-9934 Flat Pedal Style



H-D Logo Kick Starter Pedal VT No. 17-0315



VT No. 17-0982

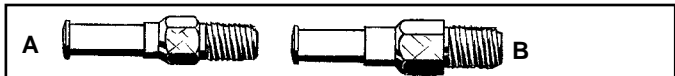
Kick Starter Pedal Assembly for 1936-76.

- VT No. Fits
- 17-0301 Flat Rubber Complete
- 17-0311 Flat Rubber White
- 17-2123 Shaft Only
- 17-0302 Chrome Skeleton (USA)
- 17-0306 Bolt Kit
- 37-0992 Chrome Bolt (5 pack)
- 17-0771 Bolt, Each
- 37-0964 Bolt, Each, Chrome



Kick Starter Rubber is a stock replacement of rubber, for old style popsicle kick starter pedal.

- Black White
- 28-0213 28-0214



Kick Starter Spring Studs.

Zinc	Chrome	Cadmium	#	OEM	Year
17-0155	9898-1	—	A	33088-52	1952-70
—	17-0156	—	—	33088-71	1971-78
—	9900-1	9901-1	—	As Above	1971-78
—	9902-1	—	B	33098-79	1979