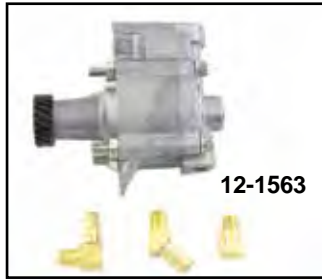




# Oil Pump Assembly 1977-up



12-1562



12-1563



12-9929



14-0109



Acorn Screw



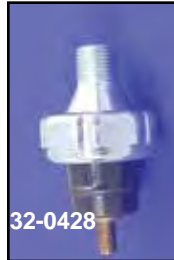
Allen Screw

**Oil Pump Seals.**  
James GB No. OEM Fits  
14-0611 14-0109 12036A 1977-90  
14-0623 14-0114 26227-58 1958-90

## XL Oil Pump Mounting Kits.

Hex Chrome	Hex Cad	Allen	Acorn	Years
8814-15	8815-15	8816-10	—	1952-Early 71
9614-10	—	8816-10	—	Late 1971-76
—	—	8817-10	9806-8	1977-90
—	—	9774-8	9775-8	1991-up

**Oil Pressure Switch** is precision calibrated.  
Replaces 26554-77. Fits 1977-up.  
VT No. 32-0428



32-0428



15-0613

## Oil Pump Gasket Kits for Sportster.

James	VT No.	Years
15-0850	15-0613	1977-90
15-1225	—	1991-up

**Complete Oil Pumps** are fully assembled. Fit 1977-up.

VT No.	OEM	Years	Type
12-1562	26197-83 26204-75	1977-85	Complete
12-1563	26204-86	1986-90	Complete
12-9980	26488-75	1977-90	Shaft w/Gear only
12-0055	26204-91A	1991-up	1991-up Complete
12-9929	26204-91A	1991-up	Complete
12-9981	26488-91	1991-up	Shaft w/Gear only
10-0749	26431-76	1977-90	Cover Bushing
10-0750	26489-75	1975-90	Body Bushing



12-1380

## Oil Pump Drive Gears for XL.

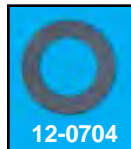
VT No.	OEM	Fits
12-1380	26318-75	1977-87
12-1377	26318-88A	1988-up

## Oil Pump Gaskets.

GB No.	James	OEM	Fits
15-0129	15-0942	26256-52	1957-76 Body to Crankcase
15-0945	15-0945	26258-52	1957-E62; 1972-76 Outer Cover to Body
15-0133	15-0946	26258-62	1962-71 Outer Cover to Body
15-0135	15-0950	26259-52	1957-E62; 1972-76 Body to Inner Cover
15-0136	15-0951	25259-62	1962-71 Body to Inner Cover
15-0199	15-0961	26435-75	1977-90 Pump Mounting
—	15-1436	—	As Above, Foamet®
15-0684	15-0962	26495-89A	1991-up Pump Mounting
—	15-1437	—	As Above, Foamet®

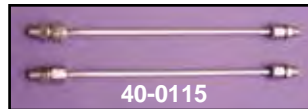
## Shims for XL's.

VT No.	OEM	Use
12-0711	6732B	Pushrod
12-0704	.005	Rocker Arm
12-0710	.007	Rocker Arm
12-0715	.015	Rocker Arm
12-0705	6769	.007 Cam (1, 3, 4)
12-0706	6770	.005 Cam (1, 3, 4)
12-0716	6771	.015 Cam (1, 3, 4)
12-0717	6773	.005 Cam (#2)
12-0718	6775	.010 Cam (#2)
12-1258	6778	.015 Cam (#2)
12-0709	6802	Starter Crank
12-0713	.003	Sprocket Shaft 1952-76
12-0714	.003	Sprocket Shaft 1976-up

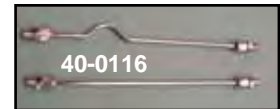


12-0704

# Oil Lines



40-0115



40-0116

**Chrome Oil Line Sets** for Sportster rocker boxes which include fittings and seals.

VT No.	Fits	Type
40-0115	1957-84	Coil
40-0116	1957-70	Magneto
40-9986	Fittings for Above, 4 pack	
14-0147	63529-57, Seals only, 100 pack	
14-0930	As Above Red Silicone, 50 pack	



**Stainless Steel Braided Overhead Rocker Arm Oil Lines.** Fit 1957-84 Sportster.  
VT No. 40-0242



**Breather Pipe** replaces 24912-52A on 1954-78 XLH-XLCH, chrome with fitting nut.

VT No. 40-0121