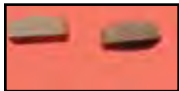




# Pinion and Shaft Hardware



**Sprocket and Pinion Shaft Key.** Sold in 10 pack. Replaces 23985-12. Fits 1954-81.  
VT No. 12-0200



**Nut, Sprocket and Pinion Shaft Taper End.** Sold as a 5 pack.

Eastern	OEM	Fits
12-0531	8011	1954-80
12-0516	23902-81	1981-85



**Lock Plate, Sprocket and Pinion Shaft.**

Sold in 10 pack.

VT No.	OEM	Fits
17-0913	24016-36A	1957-80 XL
17-0917	24018-72	1972-81 Big Twin



**Nut, Pinion Shaft Gear End.**

Eastern	OEM	Fits
12-0536	7913	1977-90
12-0577	7916A	1991-up



**Pinion Bearing Sets** for 1954-76 XL right side includes rollers and cages. Washers and snap rings included when required except where \*noted.

VT No.	Item
10-2536	Kit
12-0403	Cage
<b>Bearing Only</b>	
12-0321	1977-86
10-2531	1977-84 Race for above

## 1987-up Pinion Bearings.

VT No.	OEM	Item
10-8530	8881	Outer Race
12-0946	11177	Retaining Ring
10-1279	24647-87	Blue Bearing Assembly
10-1280	24650-87	Red Bearing Assembly
10-1283	24658-87	Inner Ring
10-1281	24659-87	White/Grey Bearing Assembly
10-1282	24660-87	Green Bearing Assembly



10-1281



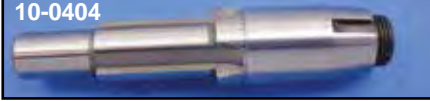
**Case Race** machined and ground to factory specifications.



## Pinion Right Side Case Race

Jims	Eastern	Size	Year
10-0252	10-0200	Standard	1954-76
—	10-0201	.002	1954-76
10-0253	10-0202	.005	1954-76
10-0254	10-0203	.010	.010 1954-76
—	12-0250	10 pack	1954-76 Set Screw
—	10-0755	Standard	1986
—	10-8530	Standard	1987-up
—	10-8531	.002	1987-up
—	10-8534	.005	1987-up

10-0404



**Pinion Shafts.** Precision ground for fit.

Jims	Eastern	VT No.	Item	Year	OEM
10-8330	10-0404	—	Pinion Shaft	1957-76	24005-57
—	10-0405	—	With Race	1977-E81	24008-75A
10-8354	10-0399	—	With Race	L1981-85	24005-80
—	10-2531	—	Race Only	1977-86	24009-77
—	—	12-0321	Bearing Only	1977-86	24648-77



12-1394

**Pinion Shaft Gears.** White is largest, brown is the smallest. \*Note: Motor Shop Brand.

1952-76	1991-99
24011-37	—
Standard 12-1394*	—
Standard 12-1473	—
White	12-1469
Red	12-1468
Blue	12-1467
Green	12-1470



10-0711

**XL Cam Gear Bushing Kits** include bushings for #1, 2, 3 and 4. Cams. standard size. Fits 1957-90. VT No. 10-0711



10-8265



10-8266



10-8267

## Cam Bushing Kit.

VT No.	Year
10-8265	1986-90
10-8266	1977-85
10-8267	1957-77
10-8273	1991-96



10-8273



## Genuine Torrington Bearing Set.

4 piece set for XLS 1957-85.

VT No.	Brand	U/M
10-8285	V-Twin	4
10-8283	Torrington	4
12-0425	V-Twin	Each



**Cam Thrust Washers** for 1958-up.

VT No. 17-0921



## Motor Shop Cam Cover

**Bushing Service** will install new bushings in right side case and cam cover for 1957-up XL models.

VT No. 60-0131