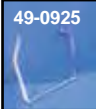




### Jiffy Stand Parts for 1929-52 45 Solo models.

VT No.	OEM	Item
13-0189	—	Replica Spring
13-0171	50012-30	Black Spring
13-0177	50012-30	Chrome Spring
49-1161	—	Spring Kit
49-0964	50035-30	Spring Plate, Zinc
49-0023	—	Long Spring Plate
49-2381	—	Parkerized Leg Only
49-0065	50060-30	Jiffy Leg, Black
49-2003	50060-30	Jiffy Leg, Chrome
49-2068	Kit	Chrome Leg
49-0066	50092-30	Leg Bushing
49-0089	50110-30	U Bolt Kit, Chrome
37-8819	50110-30	U Bolt Kit, Black
2653-5	50110-30	U Bolt Kit, Parkerized
49-2547	50002-32	Complete Assembly, Black Leg
49-0246	50002-32	Complete Assembly, Chrome Leg
49-1871	50002-32	Jiffy Stand Assembly, Black



**Rear Frame Stands** for 1936-52 45 models. Order stand catch and mounting hardware separately. Replaces 49502-36

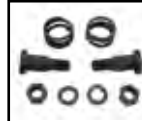
VT No.	Finish
49-1936	Black
49-0925	Chrome
27-1454	45 Rear Peg Yokes



**Black Rear Stand Catch. Fits** 1936-52 45" solo. Replaces 49581-36. VT No. 31-3994

**Mounting Hardware, Parkerized finish** except where noted.

VT No.	Year	Models
8840-10	1930-35	All with bolts and washers
8841-10	1936-37	All
8015-4	1938-57	All
9616-4	1938-57	All, Chrome
35-0165		Zinc Gas Strainer Filter
35-0497		Petcock Left, Zinc



**45 Solo and Servi-Car Front Engine Bar.**

VT No.	OEM	Years	Finish
51-0892	49035-35	1929-73	45 Solo
51-0884	49035-35C	1929-73	As Above Chrome
49-0143	49061-32	U Bolts	Zinc
2767-10	Kit	U Bolts	Parkerized
2768-10	Kit	U Bolts	Chrome



**Rear Frame Bars fit Rear 45" Solo** 1929-52.

VT No.	OEM	Finish
51-0893	13030-39	Black
51-0904	13030-39	Chrome



**45 Rear Bar Mount** for solo models 1938-52.

VT No.	Item
49-2543	Mount Plate
49-2544	Stud Set
2682-17	U Bolt Kit

## VL 1930-36

**Side Valve Big Twin 74" and 80" Side Valve Components that are interchangeable for 1936-48 are listed for the Big Twin Section.**



**28 Tooth Transmission Sprocket** replaces 2034-15 on JD models 1915-29, VL models 1930-36. Drilled. VT No. Item

19-0065	Sprocket
17-1761	3rd Gear



**VL Top End Engine Gasket Set.** VT No. 15-0527

**JD and VL Gas Caps.** Caps are screw in type.

VT No.	OEM	Item
49-0136	3507-16	Gas Cap, 1916-34
49-0137	3507-35	Gas Cap, 1935-36
49-0178	4521-26	Ignition Key Set 1923-36



**Brake Rods** in parkerized. Fit 1930-35 VL replaces 4063-30.

VT No.	Type
49-0078	Front
49-0079	Rear

**VL Chains, Endless.**

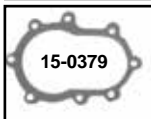
VT No.	Links
19-0380	90



**VL Spring Set** fits 1930-36. VT No. 13-1935



**Shifter Gate Nuts** fasten the shifter gate to the tank. VT No. 8846-2



**VL Transmission Gaskets** for 1930-36 Side Cover. VT No. Type

15-0379	Side
15-0411	Top

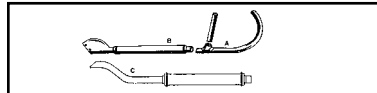


**1915-35 JD-VL Transmission Gear.** VT No. Item

49-0272	2298-15 Slider Gear
17-1761	Drive Side Gear

**VL Axle.**

VT No.	Fits
44-0507	1930-36 Rear Only, Parkerized
44-0481	1930-36, Parkerized
44-0717	Sleeve



**Clamps Not Included With Header Sets.** VT No. # Item Finish

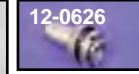
30-0171	A	Header Set	Black
30-0172	A	Header Set	Chrome
30-0169	B	Muffler	Black
30-0170	B	Muffler	Chrome
30-3212*	C	Muffler	Black
30-3213*	C	Muffler	Chrome

\*Note: Features an upsweep Tail Piece for 1934 only. Note: 3 and 4 Piece Replica Exhaust Systems require hand fitting during final assembly. We suggest to loosen motor mount bolts during installation to allow pipes to adjust to motor position then re-tighten engine bolts.



**Exhaust Pipe Clamp Sets** complete in black or chrome for single exhaust. Number of clamps in each kit shown. Fits 1930-36 VL.

Chrome	Black	Item
31-3954	31-2129	Clamp
49-2590	49-2577	Tab



**Side Valve Transmission Mainshafts** VT No. OEM Model Year

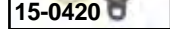
49-0201	35043-41	45	1941-73
---------	----------	----	---------

**Clutch Components** 1936-40 Big Twin. VT No. OEM Item

12-0626	2275-38	Clutch Hub Nut Kit, 3 piece
13-0234	2511-36A	Clutch Spring Set
49-0366	Tool	Clutch Hub Nut Install

**Clutch Spring Sets** VT No. OEM Model/Year

18-2324	2508-30	Collar for Above
13-0234	2511-36A	UL, EL, FL 1937-40
13-0139	38077-41	UL 1941-48
26-0930	Lever and Screw Kit	45 Side Valve 1941-73



**3 Bolt Linkert Carburetor Gasket Kit** includes 3 bolt gaskets for 1 1/4" 3 bolt Linkerts, and 2 insulator gaskets. VT No. 15-0420



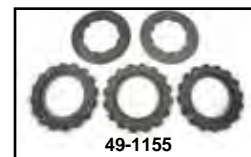
**Rear Frame Stands** for 1930-36 VL. Order stand catch and mounting hardware separately. 49-0601 features channel shape design. Replaces 3051-30.



VT No. Item

49-0601	Stand Black
49-0623	Stand Chrome
8840-10	Mount Bolts Parkerized

**Handlebar Spiral** features nickel plated threaded sleeve. Each. VT No. 49-0459



**VL Clutch Plate Set** for 1930-36. VT No. Year

49-1155	Plate Set
18-2324	Collar Set
49-0603	Screw Set
13-0232	Spring Set

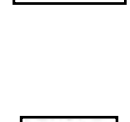
**Clutch Brass Rivets.** 100 pack.

VT No.	OEM	Type
37-8807*	8226	Short 7-4

\*Note: For clutch hub friction disc. **Rear Axle Adjuster Kit** includes cad plated bolts, parkerized collar and parkerized nuts fit 1930-1936 74" and 80" Twins.



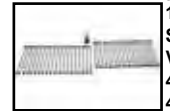
VT No. 2069-5 **JD Model Rear Sprocket** features holes as original in black finish with 48 teeth. Replaces 2049-30. VL bolt kits for 1930-36 VL.



VT No.	Item
19-0389	Flat Sprocket
19-0390	Dish Sprocket
2069-5	Adjusters
8318 CAD	Motor Kit
2604-12	Footboard Bolts



**Footboard Mount Kit** fits 1930-36 VL models, parkerized. VT No. 2604-12



**1930-36 VL Front and Rear Stainless Steel Spokes.** VT No. Size

45-0735	18"
45-0736	19"



**VL Fork Cone Pieces.** VT No. Item

24-1454	Neck Cups
24-1465	Lock Nut
24-1749	Lower Race
24-1469	Upper Race
24-1569	Kit