

44-0561



44-0349

Fits 1941-52 45" Solo.

Kit Cpt Spacer Sleeve Axle only Nut Kit Model/Year

44-0561 44-0343 44-0331 44-0216 9688-4 Black

44-0349 44-0323 44-0331 44-0347 8832-4 Chrome



Rear Chain Adjuster Sets are heat treated.

Available in pairs with plated lock nuts assembled to insure proper fitting threads.

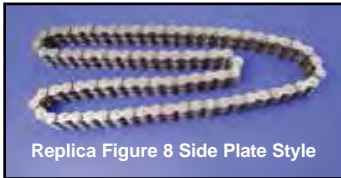
Chrome Cadmium Parkerized Fits

7814-2 8479-2 9628-2 1930-52 Solo 45"

Primary Chain



19-0367



Replica Figure 8 Side Plate Style



19-0364



19-0360



19-0363

Diamond Endless Primary Chains.

VT No.	Size	Fits
19-0367	428x2-82	1936-64 Big Twin 74 and 80, Figure 8
19-0360	428x2x82	1965-84 Big Twin (Oval)
19-0791	428x2x80	Duckworth
19-0392	428x2x80	Special Length
19-0363	35x3-92	1952-56 K-Model
19-0364	35x2-96	1938-73 Servi-Car
19-0365	35x2-100	1929-52 Solo
19-0366	428x2-88	1930-36 VL
19-0380	428x2-90	1930-36 VL Solo



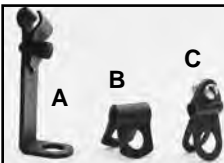
Primary Chain Connector Links. Sold each.

VT No.	Type	Model
19-0356	35 x 2 Chain	45" Side Valve
19-0377	428 x 2 Chain	1936-85 Big Twin



TYK Primary Chain has shot-peened, heavy-duty side plates and solid roller construction.

VT No.	Fits	Links	Style
19-0876	1930-64 Big Twin	82	Oval
19-0934	1936-64 Big Twin	82	Fig 8
19-0877	Chrome	82	Fig 8



Parkerized Throttle & Spark Cable Brackets.

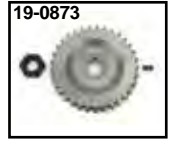
VT No. #	OEM	Year	Model	Type
9006-4	A 3371-37	1937-48	SV BT	Throttle
9007-2	B 9967	1930-73	45"	Throttle & Spark
9008-5	C 55627-38	1930-48	SV BT	Spark

Side Valve Sprocket



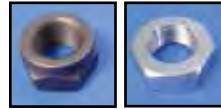
45" Engine Sprockets for 1929-73 all Solo and Servi-car.

VT No.	Kit	Item
19-0388	19-0870	22 Tooth
—	19-0871	27 Tooth
—	19-0872	30 Tooth
—	19-0874	31 Tooth
19-0387	19-0873	33 Tooth
—	19-0680	33 Tooth



19-0873

12-0200 Key
12-0501 Nut



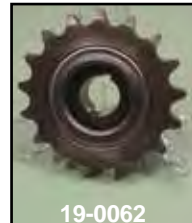
12-0503 12-0504

Motor Sprocket Nuts sold each.

VT No.	OEM	Fits
12-0501	7991	1929-73 45"
12-0503	24003-30	1930-54 Big Twin
7101-1	Colony	As Above
7101-1T	V-Twin	As Above
7620-1	Colony	1955-up
12-0504	V-Twin	1955-up



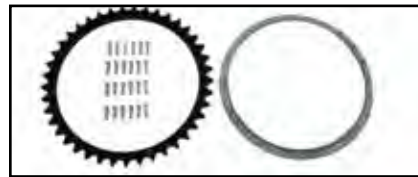
JD Motor Sprocket fits 17 tooth 1915-29 F. VT No. 19-0160



19-0062

45" Transmission Sprocket is 17 tooth with built in seal.

VT No.	Item
19-0062	Sprocket
19-0328	Sprocket
12-0520	Nut
12-0211	Key
19-0074	Sprocket Kit
14-0176	Seal
14-0183	Seal, OE



Rear Sprocket.

VT No.	Item
19-0010	Sprocket Kit
19-0089	Splash Ring
16-0341	Rivet Tool



13-0123



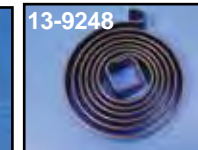
13-0122



42-0217



13-9249



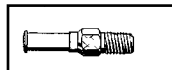
13-9248



13-0945

Kickstarter Return Spring for all 1936-85 Big Twins and all 1941-63 45" models.

VT No.	OEM	Model	Finish
13-0123	33085-36	Big Twin	Chrome
13-9249	33085-36	Big Twin	Black
13-0945	33085-36	Big Twin	Parkerized
13-0122	33084-41	45"	Chrome
13-9248	33084-41	45"	Black
42-0217	33150-59	Big Twin	Chrome Cover



Kick Spring Studs fit 1941-63 45" kick starter. Replaces 33088-41.

VT No.	Finish
9756-1	Parkerized
9755-1	Cadmium
9754-1	Chrome