



45" Solo



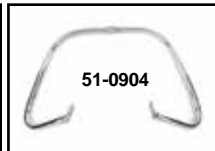
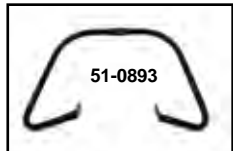
32-0704 Early Twins Wiring Harness Kits are complete and feature cotton braided wire and asphalt loom.

VT No.	OEM	Application
32-0700	4735-30	1930-36 RL
32-0701	4735-36	1936-37 WL
32-0703	4735-38A	1938-46 WL
32-7555	4736-42M	1942-45 Army 45"
32-0704	70320-47	1947 WL-G
32-0705	70320-48	1948-57 WL



45" Speedo Cables are 50" long.

Zinc	Chrome	Nut
36-2571		Male
36-2572	36-0935	Female

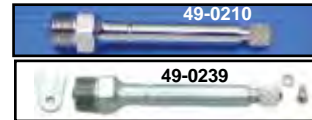


Rear Frame Bars fit Rear 45" Solo 1929-52.

VT No.	OEM	Finish
51-0893	13030-39	Black
51-0904	13030-39	Chrome



Weld On Frame Hardtail features raw forged rear axle plates as original.
VT No. 51-0465



Speedometer Drive Units include housing and gear as OEM replacement, for transmission drive. 45" types are for the rear wheel. Fits 1937-52 45" Solo.

VT No.	OEM	Teeth	Finish
49-0210	67129-37	8	Chrome
49-0239	67129-37	8	Zinc
49-1745	Kit		Parkerized
49-1746	Each		Parkerized
49-0209	67080-37		Retainer for Above
15-0184	67141-36		Mount Gasket

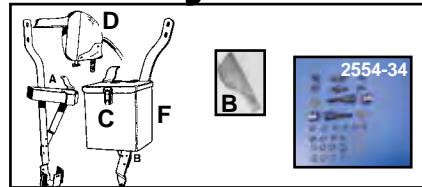


Watch on YouTube!
<https://www.youtube.com/watch?v=NX00E7eLxS0>



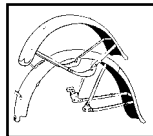
49-2501 Luggage Carrier fits 45" Rigid frames only. Includes military saddle-bag mount bracket fastened in place army finish.

VT No.	Item
49-2501	Carrier
2541-19	Bolts Big Twin



45" Military Replicas in primer finish, mounts to front spring forks.

VT No.	#	Item
49-0127	A	Machine Gun Bracket
49-0915	B	Machine Gun Leather Scabbard
49-0399	C	Ammunition Box
49-2571	D	4" Blackout Spotlight with visor (NOS)
49-0194	F	Blackout Box
2554-34		Mount Kit, Gun Bracket
2590-13		Skid Mount



45" Military Fenders are skirtless Army style of 1940's for 45" Solo models with Spring Forks 1937-52.

VT No.	OEM	Type
50-0771	3710-41A	Rear
50-0772	3702-41	Front



Wiring Harness Kits feature cotton braided wire with asphalt loom and handlebar and tail lamp wires included. Replaces 4736-42M, fits 1942-45 Army 45."

VT No.	Item
32-7555	Harness
2618-12	Switch Spacers



Army Brake Handle, Cast iron parkerized.

VT No.	Item
26-0583	Handle
49-1327	Tab
49-0035	Clutch Pedal
16-0341	Rivet Tool

WLA Components (NOS)

VT No.	Item
49-0496	Main Switch
49-0019	Army OE Ignition Switch



Hand Lever Lock Tab.
VT No. 49-1327



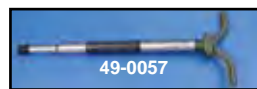
Kick Starter Flat Rubber Pedal Assembly includes mount bolt pin kit with bushing for one piece kick starter arms 1936-76 models.

VT No.	Item	Color/Style
17-0283	Complete Pedal	45"
28-0341	Rubber	Black, 45"



WLC Military Axles.

VT No.	Type
49-0260	Front
49-0057	Rear



Army Saddlebags are constructed of brown leather. Replace 11786-43 and include mount strap with pins to attach to luggage carrier.

VT No.	Item
48-3164	Bag Set
49-0985	Ammunition Box
49-0986	Cast Luggage Rack



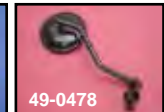
45" WLA Repair Manual.
133 pages, color diagrams.
VT No. 48-0521



45" WL Patch.
VT No. 48-1637



45 Gift Set
VT No. 48-0522



Military Mirror features black finish with adjustable stem and clamp set. Replaces 11350-41M.

VT No.	Type
49-0138	V-Twin
49-0478	Replica Black
49-0274	Replica Military Style
49-0952	Black Face Only



45" Air Pump and Clamps.

VT No.	Item
49-2539	45 Tire Pump
	11553-41M

49-2536 Clamps, 11557-40M

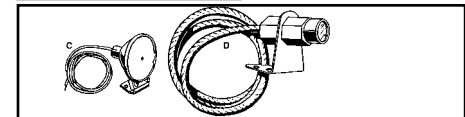


Oil Bath Bracket fits Army 45" replaces 1430-41M.

VT No. 49-0166



Army 45 Shifter Gate.
VT No. 49-0014



Military Lamps for WLC. 1942 unless noted.

VT No.	#	Type
49-7682	C	Front Marker
49-7683	D	Front Marker



Military Fork Guard fits between top fork springs and replaces 11305-36N.
VT No. 49-0440



Army Rocker Clutch Pedal to fit 19836-52. May have rust. 70 year old part.
VT No. 49-0035



Seat "T" Bar to fit Army 45" models. Includes front bushing.
VT No. 31-0620



45 WR Exhaust Drag Pipe Set features a radius that bends for better exhaust flow and a chrome finish. Fits 1936-1952 W.

VT No.	Finish
30-1306	Chrome
30-1310	Black