



# Cam Sets



Replica Cam Sets by Sifton (with original manufacturer specs).

VT No.	Type	Year
10-2976	45"	1936-73
10-8183	45" WLDR	1936-73
49-8554*	WR	1936-73
10-2977	Big Twin UL-ULH	1936-48
10-2982	ULH	1937-48
10-2981	Side Valve	Shafts

\*Note: Requires 49-8552 lifter tappet kit



**Unilite Distributor** with billet aluminum housing is a dual fire type, includes gear and features 12 volt electronic performance. The electronic ignition module fits inside distributor, so no external box. Fits 1930-73.  
**VT No. 32-0174**

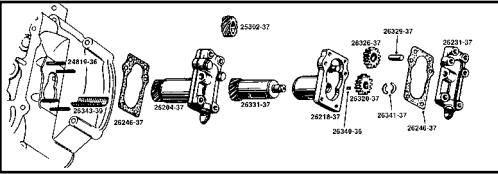


**Accel Electronic Advance Distributor** with rev limiting for 1930-52 45, 1936-47 Side Valve Big Twin and 1952-70 XL models. Features adjustable electronic advance curves, single or dual fire modes and CNC machined billet housing. Use with a 3 ohm coil.  
**VT No. 32-7804**



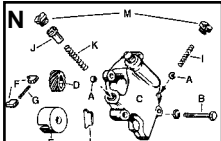
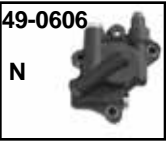
**Distributor Hold Down Clamp** fits 1957-70 XL and SV 1936-73.  
**VT No. 31-3966**

# Side Valve Oil Pump Parts



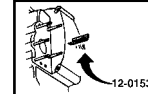
## Side Valve Scavenger Pump Parts

VT No.	OEM	Item
49-0626	Complete	Scavenger Pump
49-0444	Complete	Scavenger Pump
49-0836	Cover	Scavenger, Pump
49-0444	Complete	Pump Assembly
9408-22	Chrome	Bolt Kit
9409-22	Cadmium	Bolt Kit
9663-22	Parkerized	Bolt Kit
12-1378	25302-37	Breather Spiral Gear
15-0649	26246-37	Gasket
12-1257	26331-37	Scavenger Gear
12-0204	26340-36	Key
12-0214	26341-37	Key Halves
12-0153	26343-39	Screen
12-1465	23383-32	Oil Adjusting Screw Kit
12-1446	26218-37	Body Only
12-1504	Kit	Rebuild Kit
12-1505	Kit	Rebuild Kit

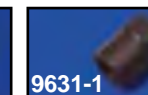
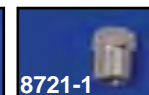
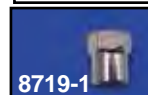


45 Feed Pump Parts for 1937-73.

VT No.	OEM	#	Item
49-0606	Complete		Pump Assembly (N)
49-0639			Feed Pump
12-1478	Kit		A, M, J, K, I
12-0110	Kit		Complete Speed Pump Assembly Kit
12-0158	8816	A	Balls (25)
9408-22	Chrome	B	45's 1937-73 Bolt & Nut Kit
9409-22	Cadmium	B	45's 1937-73 Bolt & Nut Kit
9663-22	Parkerized	B	45's 1937-73 Bolt & Nut Kit
12-0421	26318-37	D	Oil Pump Drive Gear
12-1483	26270-37	E	Holder, Pump Vane 1937-73
12-1442	26284-37	F	Vane, pair
13-0161	26286-37	G	Spring, Vane
49-0094			Upgrade Vane Holder
9523-1	26362-36	H	Check Valve Plug, Chrome
9524-1	26362-36		As Above, Cadmium
9525-1	26362-36		As Above, Parkerized
13-0114	26363-56	I	Check Valve Spring
12-1444	26369-41	J	Adjust Screw
12-1476	26383-32	J	Replica Screw
13-0160	26373-41	K	By-Pass Spring
15-1185	—		Gasket Kit



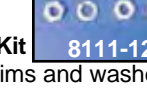
**Breather Screen** replaces 26343-39 on SV's.  
**VT No. 12-0153**



**A-Long Oil Pump Nut** with 1/4-24 thread for 1941-48 74 and 80 SV, 1941-54 45's.

VT No.	Finish
8719-1	Chrome
8721-1	Cadmium
9631-1	Parkerized

VT No.	Qty	Finish
8110-12	12	Chrome
8111-12	12	Cadmium
9673-12	6	Parkerized



**Oil Pump Adjusting Screw Kit** Side Valve, include screw, shims and washer.  
**VT No. 12-1465**



**Oil Strainer** fits 1937-73 Flatheads. Kit includes strainer, gasket and pin.

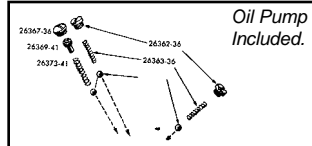
VT No.	OEM	Item
12-1542		Kit
12-1512	24975-37	Oil Strainer
12-1173	333	Pin, 10 pack
15-0214	24973-57	Gasket, 10 pack



**Flathead Relief Pipe** replaces 24912-37 on 1937-52 45's and 1937-48 Big Twin Side Valve.  
**VT No. 12-1424**



**Oil Pump Fitting** replaces stripped or broken fitting in cast iron SV feed or scavenge pumps fittings has 7/16" UNF thread with internal hex for installation.  
**VT No. 40-0512**



**1937-73 Side Valve Feed Pump By Pass and Check Valve Kit** includes (3) springs, (3) caps, (3) balls and a check valve.  
**VT No. 12-1478**

- 35-0165 Zinc Gas Strainer Filter
- 35-0497 Petcock Left, Zinc