

SV Pinion-Sprocket Shafts



Pinion Shafts						
Side Valve	Year	OEM	Jims	Eastern	V-Twin	Motor Shop
45"	1929-73	24005-37	10-0406	10-0449	10-0433	
Big Twin UL	1937-48	24006-37	10-8331	10-0407		
F, J, JD	1915-28	355-15				
VL	1930-36	355-30		10-0395	15-0382 Gasket	
W, K, XLR	All	24005-67R				
XR 750	All	24007-69R	10-0392	10-0392		
Sprocket Shafts						
Big Twin 61 and 74	1930-54	24001-30	10-8314	10-0410	10-0456	10-0469
45"	1929-73	24000-29	10-0417	10-0437	10-0479	10-0475
Early Twin	1925-29	352-25			10-0397	



Pinion



Pinion Shaft Nut, Taper End, 5 pack.

VT No.	OEM	Fits
12-0532	24023-36	1936-81 Big Twin
12-0560	7974	1923-73 45"



Lock Plate, Pinion Shaft Nut, 10 pack.

VT No.	OEM	Fits
17-0913	24015-36	1936-80 Big Twin
17-0929	24016-29	1929-73 45"



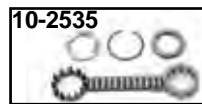
Taper Pinion Keys sold in ten packs. Fits 1941-81 Big Twin, 1929-73 45", replaces OEM 23985-12.

VT No. 12-0200



Engine Sprocket Nut Kit for 1930-54 Big Twin includes correct nut, key retaining ring and left bearing oil slinger.

VT No. 12-0620



Pinion Bearing Sets for right side includes rollers and cages. Washers and snap rings included when required except where *noted.

VT No.	Year	Model
10-2535	1936-54	Big Twin 74 & 80
10-1204*	1929-73	45" Standard



Side Valve Pinion Kit includes parts for the years of application.

VT No.	Fits	Model
12-0103	1937-73	All 45"
12-0107	1940-48	74" & 80"

Pinion Shaft Seal Ring.

VT No.	OEM	Year	Model
12-1526	24696-39	1937-73	45" Twins
12-1527	24696-40	1940-48	74" and 80" Side Valve

Sprocket



Left Sprocket Shaft Bearing & Hardware Kit includes loose rollers, cages and end slinger.

VT No.	Model	Item	Year
12-0409	Big Twin	Kit	1941-54
12-0410	45"	Kit	1929-73



Nuts, Motor Sprocket

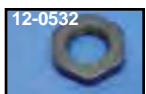
VT No.	OEM	Fits	Years
12-0501	7991	45"	1929-73
12-0503	24003-30	Big Twin & 61	1930-54



Motor Sprocket Kit includes 23 tooth sprocket, nut, key, dust ring and retainer. Parkerized BT 1936-48. VT No. 19-0137

Nut, Sprocket Shaft Taper End. 5 packs.

12-0560	7974	1929-73 45" Side Valve
12-0532	24023-36	1936-71 Big Twin



Motor Sprocket Nut Kit includes correct nut, key retaining ring and left bearing oil slinger.

VT No.	Fits
12-0620	1941-54 Big Twin
12-0619	1929-73 45"



Left Bearing End Oil Slinger.

VT No.	OEM	Year/Model
10-0430	24775-39	1939-73 45"
10-0429	24776-40	1941-54 Big Twin



Sprocket Shaft Seal and Snap Ring.

VT No.	OEM	Year	Model
7411-2	24776-40	1936-54	61"-74"-80"
8211-2	24775-39	1939-73	45" Model