



Side Valve Models Flat Head Parts



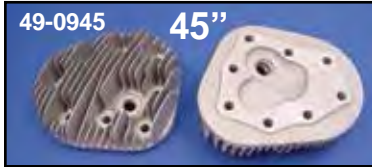
Fit Big Twin 1930-48 45" models 1929-73.



49-0908

45" Aluminum Head Set
replaces front and rear on 1941-73. Order bolts and washers separately. Replaces 16683-39 & 16681-39.

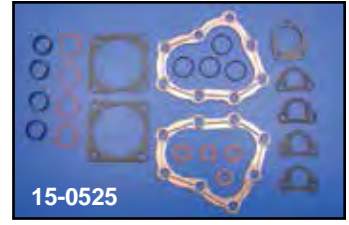
VT No. **Compression**
49-0908 Low
49-0945 High
15-0449 Base Gasket



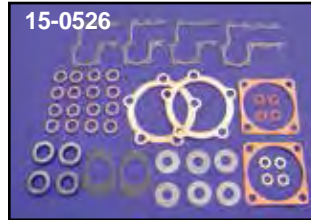
49-0945 45"



15-0531



15-0525



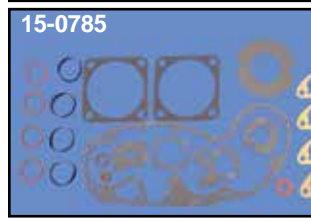
15-0526



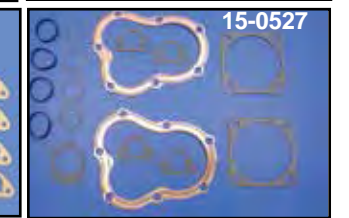
15-0515



BT



15-0785



15-0527

Aluminum Head Set for all 1936-48 74 and 80 Side Valve engine, deep fin, medium compression. Replaces front and rear 16670-36F, 16673-36R. Sold as pairs.

VT No. **Type**
49-0909 Head Set
15-0228 Copper Gasket Set
Copper Head Gaskets
15-0739 1930-35 VL
15-0185 1939-73 45"

Complete Engine Sets For Flathead (Side Valve) Models. Order head gaskets separately.

GB No.	James No.	OEM	Years	Fits
15-0531	15-0505	17026-40	1940-73	All 45" Side Valve
15-0515	15-0506	17027-36	1936-48	74" and 80" Side Valve
15-0785			1930-36	VL

Early Top End Kits.

GB No.	James No.	Years	Fits
15-0525	15-1182	1940-73	45
15-0527	—	1930-36	VL
15-0528	15-1183	1936-48	UL/ULH



Original V-Twin Replica since 1977!

Headbolts



Head Bolts, Head Nut and Washer Kits. Flat Heads

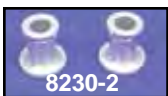
Cadmium	Chrome	Parkerized	Item
—	—	—	Stud Set (1929-50) 16 piece
7709-32	—	—	1932-40 45" Head bolt nut with washer
7711-18	8216-18	9727-18	74 and 80 with Aluminum Heads, order washers separately
9889-16	9888-16	—	1951-73 45" WL and G
7711-18-45	8217-18-45	9705-18-45	45" with Aluminum Heads
7712-36	8218-36	9728-36	45, 74 and 80 with Cast Iron Heads
—	2055-1	—	1965-73 45" Head Bolt for Alternator Mount
—	—	49-0276	45" Bolt only, 14-40MA (NOS)
7710-18	8215-18	9698-18	Aluminum Flathead Washer Kit

Studs for 1929-50 45" VT No. 2183-16



1937-48 Big Twin Side Valve Upper and Lower

VT No. **Type**
9521-22 Chrome
9522-22 Cadmium
9723-22 Parkerized
45" Lower Only
9625-16 Chrome
8825-16 Cadmium
9626-16 Parkerized



8230-2

1932-up Upper Only

9779-5 Chrome
9780-5 Cadmium
9781-5 Parkerized

45 Top Motor Mount Spacers for spacing out the two longest head bolts on aluminum head models. 1941-73.

8229-2 Chrome 8230-2 Cadmium
9721-2 Parkerized



Side Valve ULH Headbolt Wrench.
VT No. 16-0067



Engine Case Bolt Kit includes the necessary hardware to bolt together the motor cases of the years listed.



Acorn	Chrome	Cad	Fits
8121-34	8122-34	8123-34	1936-39 Flathead Big Twin
8124-34	8125-34	8126-34	1940-48 Flathead Big Twin
—	8619-17	8620-17	1937-73 45's
—	—	9697-17	1937-73 45's Parkerized

Side Valve Engine Mounts fit engines by head type cast iron or aluminum. Ends of mount are attached by bolts in head bolt set.

Zinc	Chrome	OEM	#	Type	Fits
31-0108	—	16851-37	A	Both	1936-48 BT
49-1932	—	2806-40	B	Alum.	1936-73 45"
31-0211	—	16855-51	C	Iron	1932-73 45"
—	31-3993	16851-37			

