



Spring Fork



Complete Spring Fork Installation Kits include plated neck cups, ball bearings, upper and lower races, nut with dust cover pressed on and top nut.

VT No.	Years	Model	Finish
24-0655	1939-57	45" and Servi-car	Zinc
24-0656	1936-48	Big Twin	Zinc
24-0661	1936-48	Big Twin	Chrome
24-1373	1939-57	Big Twin	Zinc
49-0034	1936-48	Big Twin	Cadmium

*Note: Big Twins use 34 balls, 45" use 30 balls.



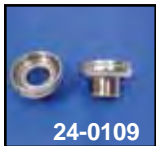
Knucklehead Spring Fork Bearing Assembly includes cadmium plated neck cup set, cadmium stem nut, nickel plated cone nut with integral upper race, lower race and balls.

VT No. 49-0034



Spring Fork Conversion Kit allows installation of 45" type small post rear forks to be installed on Big Twin 74" frames. Includes parts shown, available zinc and black oxide finish.

VT No. 49-0086



Ball Bearing Neck Cups available in pairs as cadmium plated cups only or chrome kit with races and ball bearings.

VT No.	OEM	Years	Use	Finish
24-0109	48311-36	1936-47	74" and 80"	Zinc Cups Only
24-1763		1936-47	74" and 80"	Raw
24-1780	Cadmium	1936-47	74" and 80"	Cadmium
24-0134	Kit	—	74" and 80"	Chrome
24-1078	Kit	1936-53		Parkerized

Note: Order neck cups separately.

24-0110	48310-30	1930-52	45"	Zinc Cups Only
24-0093	Kit	1939-57	45"	Chrome
12-0157	8860	5/16"	Balls	50 pcs
12-0128	8860	5/16"	Balls	30 pcs



Ball Bearing Races fit Big Twin Spring Fork and 1952-77 Sportster type, 1929-57 45"s. Sold each.

VT No.	OEM	Years	Use
24-0099	48346-39	1929-57	Upper and Lower 45"
24-0100	48345-36	1936-48	Upper and Lower 74" and 80"
49-1507		1936-38	Lower
24-0638	Special	1936-37	45" Stem fits Big Twin
24-1078	45"	1929-57	Kit
24-1749	VL	1930-36	Race Set



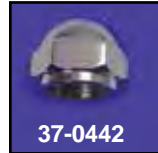
Lower Bearing Guard centers lower race on stem.

VT No.	OEM	Fits
49-2000	48361-38	1936-48 Big Twin
49-2001	48363-40	1936-57 G 1936-52 W



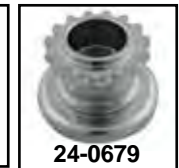
Spring Fork Stem Nut

Colony	VT No.	Finish	Fits
8484-1	8484-1T	Chrome	1936-48 Big Twin
8485-1	8485-1T	Cadmium	1936-48 Big Twin
9720-1		Parkerized	1936-48 Big Twin
8486-1	8486-1T	Chrome	1929-57 45"
8487-1	8487-1T	Cadmium	1929-57 45"
9713-1		Parkerized	1929-57 45"



Chrome Stem Nut. The shoulder on its base fits into the top triple clamp for positive alignment.

VT No.	Fits
37-0442	Big Twin
7802-1	Big Twin, Colony
24-1459	Big Twin, Early Years
8008-1	45" Model, Colony
49-0059	Stem, BT
49-0028	Stem 45"



Replica Spring Fork Cone Nut is gear type with dust shield pressed on.

VT No.	OEM	Fits	Year
24-1415	2753-31	61"	1936 only
24-1370	Nickel		1936 only
24-1313	2753-36	74-80"	1937-39
24-0150	48327-36	74-80"	1936-47
24-0679	48327-36	74-80"	1936-47
24-0151	48335-40	45"	1940-47
24-1373	Kit		1936-48
24-0156	Conversion	45" to 74"	Nut, 7/8" thread
24-0638	Conversion	45" to 74"	Race Only



Cone Nut Wrench features pins to turn cog style cone nut 3/8" drive. VT No. 16-0178



Tapered Bearing Conversion Kits.

VT No.	Years	Model
24-0230	1936-48	Big Twin
24-0245	1939-57	45" and Servi