



Inner Primary Cover 1936-64



Oil Guard Detail



Replica Inner Primary Covers with drain fitting installed. 42-0699 includes sprocket oil guard. Oil guard may have to be removed on some foot shift applications.

Black	Chrome	OEM	Year
42-3654	—	60626-36	1936-54
42-0644	42-0643	60626-36	1936-54
42-0646	42-0645	60620-55	1955-57
—	42-0862	60620-58B	1958-64
Raw			
42-1212		60626-36	1936-54
42-1213		60620-55	1955-57
42-1214		60620-58	1958-64



42-1872

Steel Inner Primary Covers for 1936-54 has small hole at motor end, 1955-69 has large hole for splined sprocket shaft. The 42-0623 is slightly deeper to mount to 1965-69 engine cases.

Chrome	Black	Years	Item
42-0621	42-0619	1936-54	
42-1139	42-1138	1955-57	
42-0622	42-0620	1958-64	
42-0623		1965-69	Chrome
42-0617*		1970-84	Alternator type
	42-3654	1936-52	Black
Bracket			
49-1152		1936-57	Lower and Upper
49-1153		1958-64	Upper
42-1521		1939-57	Rebuild Kit
42-1872			Tab Kit

*Note: Allows use of 1955-64 type compensator outer covers on alternator, electric start must be sacrificed.



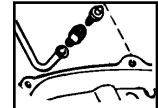
Inner Primary Mounting Kits contain all hardware to mount tin inner primary to engine on Big Twins.

VT No.	Years
7811-14	1936-54
7812-12	1955-64



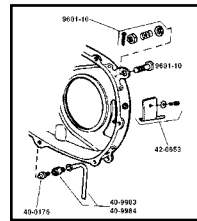
Inner Primary Mount Kit includes hardware to mount inner to oil tank and frame.

VT No.	Finish
9601-10	Parkerized
2071-10	Chrome



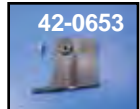
Inner Primary Cover Drain Tube for sheet metal early Big Twin primary. Tube with nut.

VT No.	OEM	Year/Type
40-9983	60546-36	1937-58 Rigid
40-9984	60546-59	1959-64 SAF
40-0835		Fitting



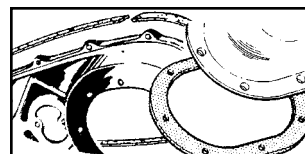
1954-64 Rear Chain Oiler Kit replaces 63591-62 to fit on rear of inner primary cover includes screw.

VT No.	Item
42-0653	Rear Chain Oiler
40-9983	Oil Drain 1936-57
40-9984	Oil Drain 1958-64
42-0589	Oil Guard
42-0835	Fitting



Chain Oil Kit. Cad plated oiler body, 63607-54, oiler adjusting screw, 63610-53, nut and brass washer used on 1954-62 Panheads.

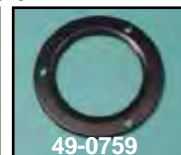
VT No. 2321-4



Primary Gasket Kit includes 3 cork gaskets for 1936-64 Big Twin outer primary covers, includes 60540-36, 60567-36 and 60565-36.

Cork Primary Cover Gaskets for 1936-64 Big Twin.

James	GB	OEM	Item
15-0905	15-0175	60540-36	Primary
15-0919	15-0177	60565-36	Clutch Cover
15-0920	15-0178	60567-36	Inspection
15-0180	15-0408	60629-55	Inner Primary, 1955-64
15-0844	15-0642	—	Kit Complete, 1936-54
—	15-0417	—	Kit Complete, 1936-64



Reinforcement Ring fits inner primary.

VT No.	Year
42-0618	1936-54
49-0759	1955-64