



Bobbed Gas Tank 1936-84



38-0100



38-0101



38-0542



38-0542 underside



38-0546



38-0543



38-0543 underside



38-0112



38-0165



38-0101

Bobbed Gas Tanks fit 1936-84 FLH-FXE with Bobbed tank type mounts for years listed not FXR or FLT models. Use 1975-up petcocks with nut. Tanks accept stock dash and speedometer. Order cap set separately.

VT No.	Gal	Cap Type	Caps
38-0816	3.5	Bayonet	38-0312
38-0100	3.5	Bayonet	38-0312
38-0101	5.0	Bayonet	38-0312
38-0542	5.0	Bayonet	38-0312
38-0852	3.5	Bayonet	38-0312

VT No.	Gal	Cap Type	Caps
38-0112	3.5	Screw Bung	38-0321
38-0113	5.0	Screw Bung	38-0321
38-0165	6.0	Screw Bung	38-0321

With Welded On Emblem Mounts to accept 1966-72 emblems

38-0546*	5.0	Bayonet	38-0312
38-0543	5.0	Bayonet	38-0312

*Note: Use pre1975 Petcock Right Side



Gas Tank Mounting Kit includes spring and clip, large horseshoe mount, rubber bushing, and cup bumper.
VT No. 38-0204

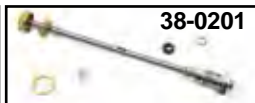


Gas Tank Mount Kit includes 3 tank mounts, brackets, shifter tube, 2 bayonet filler bings, lower threaded fitting insert, right side fuel nipple and top threaded insert for the fuel rod.

VT No.	Fits	Year
38-1644	BT	1936-65
38-1645	45	1941-73



38-0232



38-0201

Shut Off Kits include rod and seat for Big Twin.

VT No.	Year	Type
38-0419	1941-49	VT
38-0232	1941-49	Replica
38-0201	1950-65	VT
38-0537	1950-65	VT
38-0231	1950-65	Replica



38-0226

Shift Mount Tab Kit includes two brackets and tube for shift and 3 tank mounts for use on Big Twin hand shift tanks, must be welded on. VT No. 38-0226



38-0115



38-0204

4.5 Gallon Quickbob Gas Tank is a one piece tank to fit 1948-84 Big Twin frames and features 1983-up filler necks. Mounts with stock hardware and uses 1975-up type petcock, VT No. 38-0204 required for installation.

VT No.	Item
38-0115	Tank
38-0204	Mount kit
38-0321	Cap Set



38-0208



38-0206

40-1255



38-0309

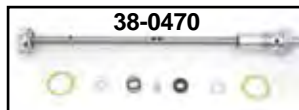
38-0221



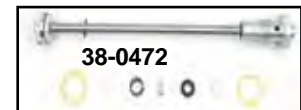
38-1644

Gas Tank Repair Pieces include fillers, four piece tab set for top, bottom, right and left. Can be welded on stock and after-market tanks.

VT No.	Item
38-0208	Tab Set
40-1255	Filler Neck, Bayonet
38-0206	Filler Neck, Late Bung type, right and left, pair
38-0221	Petcock Fitting, male, 1975-up
38-0309	Petcock Fitting, female, 3/8 NPT
38-1644	1936-65 Kit
35-0871	Oil and Gas Fittings, Raw, old



38-0470



38-0472

Shut Off Kits include rod and seat for Big Twin.

Viton Tipped		
38-0470	1941-49	BT
38-0471	1941-49	45"
38-0472	1955-65	BT
35-0291	Viton Tip	



Viton Tip Close Up

Important Gas Tank Information: All tanks are shipped unpainted unless otherwise noted. Caps and petcocks are not included. Carefully check the new tank for flaws and fit before painting. Do not grind or sand the seams or joints. Clean the inside of the tank and it is suggested to pressure test and use a tank sealer. Check petcock openings, making sure the petcock can be easily installed. Use proper hardware to mount tank, including correct bushings, brackets and spacers required for assembly. **Tedd Cycle, Inc.** is not liable for paint work or labor claims of any kind. **Tedd Cycle, Inc.** is not the manufacturer of the gas tanks.