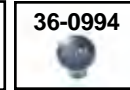
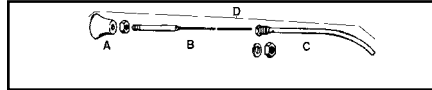
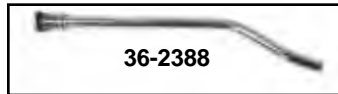




Choke Cable



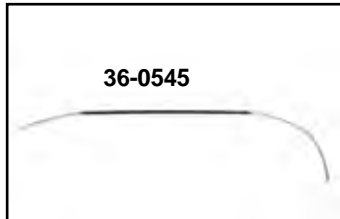
FLH-FXST-FLT Choke Cable.
Complete assemblies include knob, casing and inner wire.



VT No.	OEM	Item	Fits
36-0989		Assembly	1967-70 FLH
36-0993	29212-71	Assembly	1971-78 FLH
36-0523	29213-79 29211-86	Casing & Wire	1979-84 FLH, 1984-89 FXST 1985-86 FXWG
36-0517		Inner wire	1971-78 FLH
36-0995	29214-71	Chrome Knob	1971-89 FLH-FXST
28-2117	27451-82	Rubber Grommet	1982-89 FLH-FXST
12-0576	27450-82	Nut	1982-89 FLH-FXST
12-1190	11013	Retaining Ring	1979-89 FLH-FXST-FLT

FX-FXR Choke Cable Assemblies are for years listed.

VT No.	#	OEM	Fits
36-2389	D	Kit	1973-78 FX-FXS
36-2390	D	Kit	1978-84 FX-FXS
36-0987	C	29220-67	1967-70 FL
36-2386	C	29221-73	1973-78 FX-FXS
36-2388	C	29215-78	1978-84 FX-FXS
36-2387	B	29216-73	1973-84 FX-FXS 29219-78 1979-E80
36-0994	A	29214-67	1971-84 FX Knob (Black plastic)



Chrome Choke Cable Bracket is for use on 1966-70 Shovelheads.
VT No. 31-4188



Chrome Throttle Cable Bracket fits all Twins with Bendix type carburetors. Bracket replaces 27459-74.
VT No. 35-0208

Replica Cables for stock length application. Include braided steel inner with spiral wold outer covers with black braided cotton as original Crafted in USA. Restoration quality!

VT No.	Fits	Type
36-0688	1952-64	Mousetrap
36-0545	1950-52	Brake

Choke Cable Nut Kit includes nut 7638, and seal 27451-82 for dash mounted choke on FL-FXWG-FXST models. VT No. 37-8942

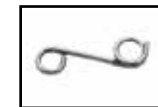
Throttle and Spark Cable Bracket



Throttle and Spark Cable Brackets have parkerized finish and mounting hardware as original.

Overhead Valve (OHV)

VT No.	#	OEM	Year	Model	Type
9005-4	A	3371-36	1936-48	OHV	Throttle
31-0537	E	56605-49	1949-53	OHV	Throttle
31-0973		Parkerized	1949-53	OHV	Throttle
31-0787			1948	OHV	Throttle
2041-7	F	45218-52	1968-72	OHV	Throttle
37-9028	G	56609-52	1957-65	OHV	Throttle



Control Cable Guide Hook replaces stock 45092-66 Stock on all 1966-84 FL, 5 pack
VT No. 31-0193



Braided Cable Heat Shrink Tubing.

Clear heat shrink tubing is for use on all braided stainless steel cables to prevent cable from scratching painted or chromed surfaces while still keeping that braided steel look. Kit contains four 16" long heat shrink tubes to cover two throttle cables, one clutch and one speedometer cable. Bulk tubing is in a 10 foot roll.

VT No.	Item
40-0015	Cable Sleeve Kit
40-0019	3/8" x 10' Roll
40-0020	1/2" x 10' Roll
40-0021	3/4" x 10' Roll