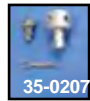
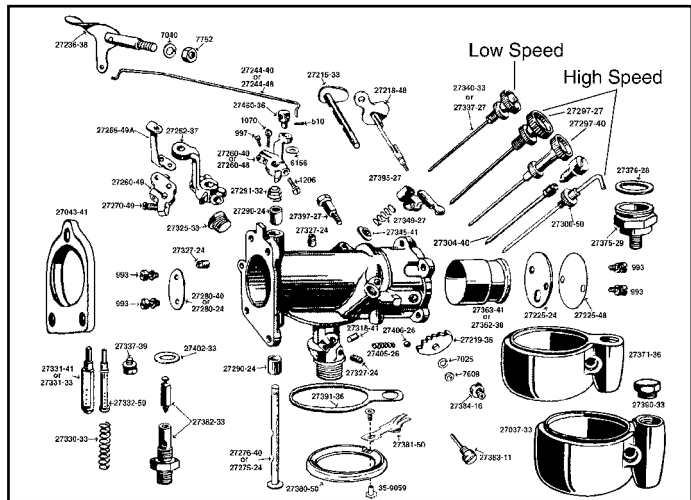




# Replica Linkert Carburetor Hardware



VT No.	OEM	Item
35-0482	27037-33	Early Float Bowl
35-0541	27043-41	45" WLA Spacer
35-0511	27215-33	Choke Shaft, 45" and SV BT
35-1254	27218-36	Choke Shaft OHV
35-1065	27218-48	Choke Shaft OHV
35-0488	27218-36	Choke Shaft BT 1936-47 All
35-0493	27219-36	Air Intake Shaft Stop
35-0940	1232-24	Choke Disc
35-9251	27225-24	Choke Disc, 1930-47 1 1/2"
35-0489	27225-48	Choke Disc Big Twin
N/A	1238-33	Lever VL 1933-36
35-9081	27252-37	Lever, ULH and 45", 1935-48
35-0483	27260-40	Lever, 1940-47 Overhead Valve
35-0797	27260-40	Lever, 1940-47
35-0445	1238-36	Lever, 1940-47
35-0784	27260-40	Lever, 1940-47
35-0495	27260-49A	Throttle Lever Bracket BT
	27265-49A	With arm, Set
31-1257		Arm Only
13-9241	27270-49	Lever Screw Spring
35-9062	27275-26	Throttle Shaft, 1"
35-9060	27275-24	Throttle Shaft, 1 1/4"
35-9152	27276-40	Throttle Shaft BT, 1 1/2"
35-9192	27276-40A	Throttle Shaft BT, 1 1/2"
35-0958	27280-34	Throttle door, 1" #12
35-9061	27280-24	Throttle door, 45", 1 1/4" #13
35-0860	27280-24A	Throttle door, 45", 1 1/2" O.S. +0.30
35-0679	27280-40	Throttle door, 61", #12
35-0861	27280-40A	Throttle door, 61", 1 1/2" O.S. +0.25
35-0492	27280-51	Throttle disc (9-X) BT 1 1/2"
35-0862	—	Throttle disc Oversize +.030
10-0742	27290-24	Shaft Bushing Set
35-0473	—	Nylon Shaft Bushing Set
13-0157	27291-32	Shaft spring
35-0999	27297-27	HS Needle Valve
35-9098	27297-27	HS Needle Valve, 45", BT
35-9109	—	As Above, Oversize
35-9045	27297-30	HS Needle M-18
35-0460	27298-40	HS Needle, WLA, Fixed
35-0475	27297-40	HS Needle Valve 1940-49 Big Twin
35-9055	27300-50	HS Needle Valve 1950-65 Big Twin
35-0395	27304-40	Linkert Needle Valve Lock Screw
35-9121	27318-41	1941-43 45", 1941-54 Big Twin Fixed Jet
35-9122	27318-50	1951-65 Big Twin Fixed Jet #18
35-9125	27318-51	1951-65 Big Twin Fixed Jet #19
35-9064	27325-33	Idle Body Plugs 5/16", 5 pk
2681-4	27325-33	Idle Body Hole Plug Kit, Brass finish
35-0524	27327-24	Idle Passage Plug, 5 pk
35-0554	27327-24	Idle Passage Plug Set
13-0156	27330-33	Nozzle Spring, 10 pk
35-0481	27331-33	Main nozzle SV 1933-53

35-0478	27331-40	Main nozzle OHV 1940-51
35-0494	27332-50	Main nozzle Big Twin, 74B
35-1066	—	Main nozzle, Bomb site
35-9056	27337-27	Low Speed Needle Valve, All
2695-5	27337-27	Low Speed Needle Valve
2695-5T	—	As Above, V-Twin
2696-5	27337-27	Low Speed Needle Valve
35-0477	27340-33	1" Low Speed Needle Valve
2707-5	27340-33	1" Low Speed Needle Valve
2708-5	27340-33	1" Low Speed Needle Valve
35-9051	27345-41	Spring collar
13-0158	27349-27	Needle Valve Spring
35-0479	27362-30	1 1/8" Venturi (45's)
35-0491	27363-41	1 5/8" Venturi (M74B)
35-1452	—	Kit
35-0546	27371-36	Bowl Assembly
35-0490	27371-36	Bowl (Late)
35-0482	27037-33	Float Bowl
35-0824	—	Early Float Bowl
35-0825	—	Float Bowl, Early
35-0241	—	Float Bowl, Late
8901-4	27375-29	Late Float Bowl Pins
8902-4	27375-29	Lock Nut, Chrome
15-0232	27376-28	Lock Nut, Cadmium
35-9065	27377-39	Nut Gasket
15-0761	—	Bowl Drain Screw
35-4573	27380-50	Washer for Above
35-9153	27381-50	Brass Float
35-9053	27381-50	Replica Float Lever
35-9059	—	Float Lever
35-0502	27382-33	Nut Plate and Screw
35-0545	—	Needle and Seat
35-0822	27382-33	Needle and Seat
35-0833	—	Needle and Seat Replica
35-9063	27383-11	Viton Needle and Seat Replica
35-9326	27383-11A	Float Pivot Pin with Caps
35-9047	—	Float Pin with Caps
35-0250	27390-33	Float Pin and Cap Set
15-0534	—	Bowl Valve Cover Cap
15-0304	27391-36	Cap Gasket
35-9052	27395-27	Bowl Gasket
35-0781	27397-27	Needle Valve Lever
35-9054	27397-27	Needle Valve Lever
13-0159	27405-26	Valve Lever Shoulder Screw
35-9070	27406-26	Choke Detent Ball Spring
35-0207	27450-36	Detent Ball
		Cable Block End