



Switch

1982-95 Switch Kit

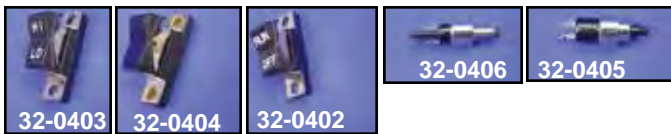


1982-95 Handlebar Switch Kit includes complete right and left switch assemblies, brake light switch, mounting screws and clips.

Black	Chrome	OEM	Item
32-8000	32-9070	71599-92	(A) Left turn signal
32-8001	—	71589-92	(B) Engine, Stop-Start
32-8002	—	71591-92	Right turn signal
32-8003	32-9069	71597-92	Dimmer and Horn
32-7782	—	71590-92	(E) Stop switch, front
32-8084	32-9208	Kit	1982-up Switch Kit includes A, B, C, D, E

Hardware for Above, Note: Finish is not black
 37-8966 — 2907 25 screws pack, zinc

1972-81 Switch



Handlebar Switches for 1972-81 models. Available with or without wire. ***Note:** 32-0395 is 5 pack.

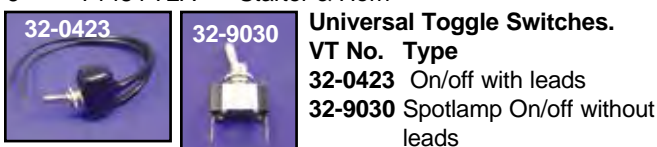
W/o wire	W/o wire	With wire	OEM	Type	Style
10 pack	Each	Each			
32-0395*	32-0403	32-8933	71546-75A	Hi-Low	Rocker
32-0391	32-0404	—	71483-72	Plain	Rocker
32-0394	32-0402	32-8931	71547-75A	Run-off	Rocker
32-0392	32-0406	32-8930	72001-69B	Brake	Button
32-0393	32-0405	32-8919	71484-72A	Starter	Button
32-0393	32-0405	32-8920	71484-72A	Horn	Button
32-0408	—	—	71535-72	Long	Button
32-0407	—	—	71534-72	Short	Button

Cap 5/16" 1972-E1973
 3/16" L73-81

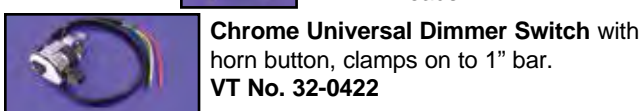
Switch Control Assortment for 1972-81 models saves time and money on dimmer, starter-horn button hardware. Note quantities supplied. Included are the following:

VT No. 32-0320 for entire assortment

Qty	OEM	Switch	Qty	OEM	Switch
2	71546-75A	Hi-Low	10	71535-72	Long
6	72001-69B	Brake	10	71534-72	Short
2	71547-75A	Run-off	2	71482-72	Plain
6	71484-72A	Starter & Horn			



Universal Toggle Switches.
VT No. Type
 32-0423 On/off with leads
 32-9030 Spotlamp On/off without leads



Chrome Universal Dimmer Switch with horn button, clamps on to 1" bar.
VT No. 32-0422



V-Twin Replica Handlebar Horn Dimmer and Directional Switches feature cloth covered original style wiring, chrome plated housing and stainless screws. Army style are O.D. painted.

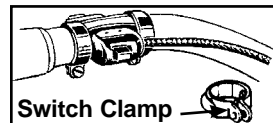
VT No.	Volt Tech	OEM	Type	Position/Style
32-1261	—	71800-26A	2 Wire	Tall
32-0574	—	71800-26	1 Wire Horn	Short
32-0554	—	71800-26A	2 Wire Horn	Short
32-0447	32-1263	71800-26	1 Wire Horn	Short
32-0542	—	—	Chrome Horn Button	—
32-0555	32-1262	74840-29	Dimmer	2
—	32-1354	74840-29	Dimmer, Army	2
32-0556*	32-1354	70058-50B	Directional	3
32-0573	32-1264	70058-50	Directional	3
32-0533*	32-1265	70058-50B	Dimmer	2

Note:** With side exit wires. *Note:** Does not include wires.



A-Chrome Button For Handlebar. Use for horn and start switch with PVC wires. Replaces 71800-26A.

VT No.	OEM	Item	Wire
32-0400	71800-26A	Horn	2 wire
32-0557	71800-26A	Horn	1 wire
32-0344	71800-26A	Parkerized, Horn Button	2 wire
32-0442	71800-70	Starter	2 wire
37-0531	2626	Stainless Mount Screws for Above	—



Switch Clamp replaces 10001, to attach switch to 1" handlebars.

VT No. Item
 32-1354 Switch Kit
 32-0397 Clamps



Chrome Handlebar Switch available in 2 or 3 position type with PVC covered wires. 2 position type used for Hi/Low beam. 3 position type features off in middle and can be used for Hi/Low beam or turn signal. ***Note:** Has Side Exit Wires.

VT No.	Type
32-0401	2 Position without wires
32-8085	2 Position with wires
32-0398	3 Position
32-0370*	3 Position
32-9125*	2 Position
37-0531	Stainless Steel Mount Screws for Above

***Note** Has side exit wires.

