



Single Fire V-Tech Hi Output Coil features 45 kv with 1 spark for each cylinder as fired and will mount to stock bracket and accept stock cover.

VT No. 32-0747

1. 12 volt wire from ignition switch is connected to center post along with red wire from ignition.
2. Connect the black wire to outer post from front cylinder.
3. Connect the white wire to other outer post for rear cylinder.



80 KV Dual Fire Coil for 1965-99 mounts to stock locations.

VT No. 32-0095



Black Andrews Black Dual Fire Coil produces more voltage than stock coils.

VT No.	Ohm	Year
32-0709	4.8	1965-80
32-0712	2.8	1981-99



Chrome Stock Style Dual Fire Coils bolt to original brackets for exact fit.

VT No.	OEM	Year
32-0513	31609-65A	1965-79
32-0514	31609-80	1980-83



Blue Streak 45,000 Volt Dual Fire Coils provide more spark and energy than stock coil and the higher voltage eliminates spark deterioration at peak RPM.

VT No.	Years	Type	Ohms
32-0171	1980-99	Electronic	2.7
32-0172	1965-79	Point	4.6

Single Fire: Just the spark plug for the piston that is in its compression stroke will be fired. The other piston, being in its overlap position will not be ignited.
Dual Fire: Both spark plugs are fired simultaneously at the time only one piston is in its compression stroke. This is the way the stock motor works on pre-TC-88 motors.
Single Plug: One spark plug in each head. Total of 2 spark plugs in one engine.
Dual Plug: Two spark plugs in each head. Total of 4 spark plugs in one engine.



Accel Single Fire Super Coil features ultra fast coil rise time with voltage output 45% higher than stock & 3.0 ohms of primary resistance. Mounts to stock coil bracket & fits under stock coil covers. Fits all Twins except TC-88.

VT No.	Type
32-0090	Yellow
32-7802	Chrome



Accel Power Pulse 12V Dual Fire Coil provides longer spark duration with a greater KV rating and faster rise time than stock coil. Molded in epoxy. for 1965-83.

VT No.	Epoxy Finish
32-0130	Yellow
32-1064	Black

Ignition Coil



Volt Tech Molded Dual Fire Coil features black late shape with bobbin type windings.

VT No.	Year
32-7572	1965-79
32-7573	1980-82



Volt Tech Stock Replica Dual Fire Coils are factory replacement quality to fit stock brackets.

VT No.	Year	Volt	Color
32-0711	Pre1965	6V	Rust
32-0128	1965-79	12V	Black
32-1268	1965-80	12 V	Red (4.8 ohm)
32-0129	1980-83	12V	Black (2.8 ohm)

Note: 32-0129 for electronic ignition, top terminal mounting.

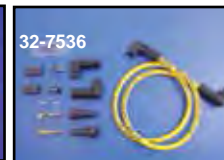


Replica 1961-64 Big Twin 6 Volt Dual Coil replaces 31604-61. Sold each.
VT No. 32-0131

Warranty

All Electrical Components sold as individual pieces or in kits are covered under our warranty "Replacement Only" Provision. All electrical related item part numbers begin with a 32 prefix. No credit will be issued for these items as they are exchange only.

Coil



Accel High Energy Dual Fire Coil is a very high KV energy output requires that it be used with

our extreme service 8.8mm silicone racing wires. Each coil is complete with two 8.8mm wire leads and appropriate chrome brackets.

VT No.	Item
32-0132	Kit 1965-87
32-7536	Wires only



Accel H.V. Dual Fire Super Coil bolt on for points ignition systems. High-tech molding for 1965-99 with 4.7 ohms.

VT No.	Ohms
32-7771	Yellow
32-7800	Chrome