



DYNA Ignition



Dyna 'S' Hi-Performance Ignition System is self contained, fits behind ignition cover, uses magnetic rotor with the original spark advance, so factory advance curve is maintained. Improves performance, extends spark plug

life, eliminates points and condensers.

Note: For dual plugged heads, on 1980-up use advance mechanism, VT No. 32-7510.

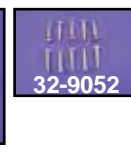
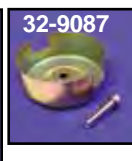
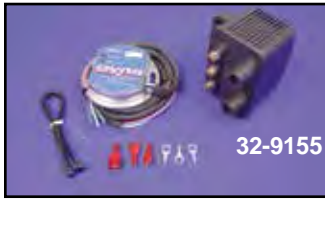
VT No. 32-7778 (DS6-1)



Dyna 'S' Single Fire Ignition has the features of the Dyna 'S', but fires front and rear cylinders independently of each other which allows

accurate timing of each cylinder. Stock ignition systems fire both cylinders at the same time which has the wasted sparks on the exhaust stroke. This eliminates this inherent problem. For use with either dual or single plug heads. On 1980-up models, use VT No. 32-7510 Advance assembly.

VT No. 32-7777 (DS6-2)



Dyna 2000i Digital Ignition available as a module only or complete kits that include correct coil. Features include single or dual fire operation, 8 advance curves, built in tach driver, adjustable RPM limit from 6000 to 7500 and easy static timing with built in timing indicator. Fits all 1970-98 carbureted models and requires 1983-up sensor cup for 1982 and earlier applications. Advanced Programming Software allows the mechanic or tuner the ability to fine tune 2000i Ignition but requires adapter.

VT No.	Item	Plug	Fire	Coil
32-9151	Kit	Single	Single	DC3-1
32-9152	Kit	Dual	Single	DC1-1
32-9153	Kit	Dual	Dual	DC2-1
32-9155	Kit	Single	Single	DC6-5
32-9159	Module Only			
32-9087	Sensor Cup			
32-9052	Cup Screw, 10 pk			
32-9120	Advanced Programming Software for Above Ignitions			
32-9121	Software Adapter Harness			



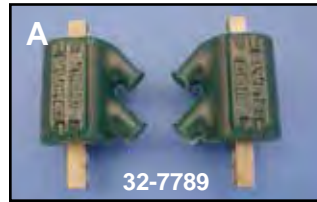
Dyna S Performance Ignition Systems. Available in dual or single fire for street applications only. Each kit includes sensor plate assembly and correct coil for each application. Single plug only. 1980-up applications require 32-7510 advance mechanism.

VT No.	#	Type
32-0800	DSK-6-2	Single Fire
32-0801	SDK-6-1	Dual Fire



Replacement Rotor for Dyna Ignitions.

VT No.	Fits
32-9300	DS-6-1
32-9301	DS-6-2



Dyna Coils. 35,000 volt! Works with all points ignitions, aftermarket or factory electronic ignitions. Note: 32-7792 is electronic, 32-7793 is for points ignition.

VT No.	#	Volt	Ohm	Dyna	Type	U/M
32-7789	A	12V	3	DC-1	Angle, Dual	Pair
32-7790	A	6V	1 1/2	DC-2	Angle, Dual	Pair
32-7792	C	12V	3	DC-6	Stock, Dual	Each
32-7793*	C	12V	5	DC-7	Stock, Dual	Each
32-8055	B	12V	3	DC-3	Angle, Single	Pair
32-8086	A	12V	5	DC-8	Angle, Dual	Pair
32-9035	B	12V	5	DC-10-1	Angle, Single	Pair

***Note:** Use 2 for single fire ignition.

K.V. Recommends the following coils for Dyna Ignitions:
DS6-1 Ignition VT No. 32-7778
 Street, Single plugs use DC-7 or DC-8
 Race, Single plugs use DC-1 or DC-6
 Street/Race Dual plugs use 2 DC-2 or DC-5, wired in series
DS6-2 Ignition VT No. 32-7777
 Race, Single plugs use 2 DC-3
 Street, Dual plugs use 2 DC-7 or DC-8
 Race, Dual plugs use 2 DC-1 or 2 DC-6
 Street, Single plug uses 2 DC10-1



Dyna Electric Tach Adapter Kit must be used with Dyna 'S' single fire ignition is installed on any twin when electric tach is used. **VT No. 32-7799**



Dyna Ignition Booster for single point systems only transforms inconsistent electrical surges into controlled bursts of energy to the coil, power is not wasted.

VT No. 32-7787