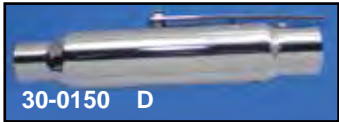
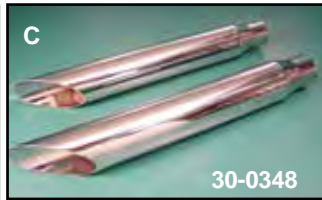




Universal Muffler

Universal Mufflers fit over 1 3/4" pipes and use clamps for mounting. All clamps available separately.



Turnout Muffler Set has 1 3/4" inner diameter inlet. Order clamps separate. Channel type mounting features concealed track on back. 20" long and 2 1/2" body diameter.

VT No. U/M
30-0625 Pair
30-0146 Each

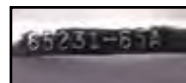
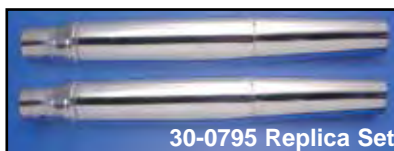
2:1 Collector has 1 3/4" inlet 3" diameter, 29" long, fits most parallel exit pipes. End may be rotated to position.

VT No. Type
30-0207 Turnout
30-1563 Slash End
VT No. Type Length
30-0207 Turnout 29"
30-1563 Slash 21"

Slip On Chrome Mufflers steel baffled with 1 3/4" inlet.

VT No.	Type	Length	Dia.	Mt	Type	U/M	Removable Baffle
30-0149	A-Slash	16"	2 1/2"	Stud	Each	No	No
30-0148	B-Tapered	16 1/2"	2 1/4"	Channel	Pair	No	No
30-0641	B-Tapered, Black	16 1/2"	1 3/4"		Pair		
30-0642	B-Tapered, Chrome	16 1/2"	1 3/4"		Pair		
30-0147	C-Baloney Slice	16 1/2"	2 1/2"	Stud	Each	Yes	Yes
30-0348	C-Baloney Slice	16 1/2"	2 1/2"	Channel	Pair	Yes	Yes
30-0150*	D-Shorty	12"	2 1/4"	Stud	Each	Yes	Yes
30-0067	Trumpet				Each	Yes	Yes
30-0871	Vape				Each		
30-0296	E-Megaphone	20"			Each	Yes	Yes
30-0794	Megaphone	20"			Pair	Yes	Yes
30-0827	Megaphone				Pair		
30-0848	Megaphone Upsweep				Pair		
30-2105	F-Megaphone Upsweep			Channel	Pair	Yes	Yes
30-2167	Megaphone Upsweep			W/Flap		Yes	Yes
30-1375	G-Megaphone Upsweep			Stud	Pair	Yes	Yes

*Note: Fits 1 3/4" or 1 1/2" diameter.

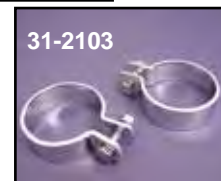
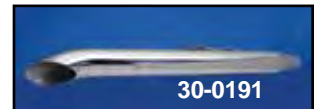


Replica Tapered Muffler Set replaces 65231-65A with 1 3/4" inlet.

VT No. 30-0795



Caution: These exhaust products are not legal for sale or use in California on pollution controlled vehicles. These products are intended for non-highway only.



Chrome Turn Out Mufflers have a 3" diameter body, 1 3/4" inner diameter inlet, 30" or 36" overall length. Order clamps separately. Great for single or dual exhaust use on FLH models. Will not fit 1985-94 FLT models. 30-0190 has mount track on back.

VT No. Size U/M
30-0190 30" Pair
30-0191 36" Each
30-0382 36" Pair
31-2108 3" Body Clamp Pair
31-2103 1 7/8" End Clamp Pair
31-1007 1 7/8" End Clamp Pair



Upsweep Muffler is 31" long with upsweep tail.

VT No. U/M
30-3391 Each
30-0565 Pair

CLASSIC

