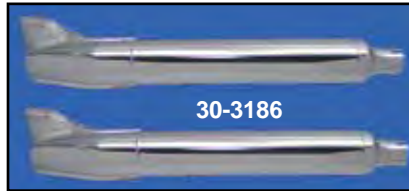




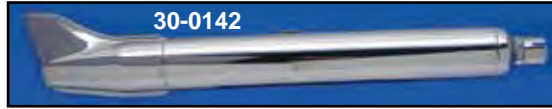
# Replica Muffler



30-0141



30-3186



30-0142



30-0218



30-3187

V-Twin™ Replica Chrome Seamless Muffler features classic fishtail or turnout ends with factory duplicated stock seams and welding for restoration or nostalgic looks with a 3/4" outside diameter. All fit 1 1/4" inlet, single and dual applications. Pairs include two mufflers and four clamps.

VT No.	Length	Type	U/M
30-0141	26 3/4"	Fishtail	Each
30-3186	26 3/4"	Fishtail	Pair
30-0142	33"	Fishtail	Each
30-0218	28"	Turnout	Each
30-3187	28"	Turnout	Pair

Note: VT No. 30-0141 stock FLH 1958-66, VT No. 30-0218 stock on 1967-69, VT No. 30-0142 clears saddlebags.



30-0817



30-0818

Straight Fishtail Muffler with scalloped fishtail tip.

Chrome Black Length  
30-0817 30-0818 32"

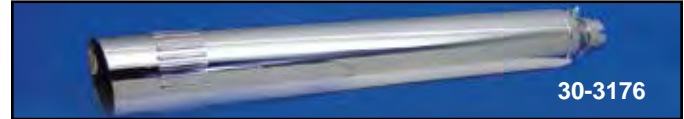


30-0142



30-0218

1970-84 FLH Replica Mufflers



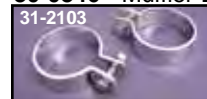
30-3176



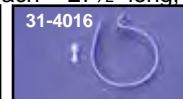
30-0346

1970-84 FLH Replica Chrome Mufflers. Kit include two mufflers and four clamps. \*Note: Not seamless.

VT No.	Item	U/M	Measurements
30-3176	Muffler	Each	28" long
30-3188	Muffler Kit	Pair	
30-0346*	Muffler	Each	27 1/2" long, 3 1/2" outside diameter



31-2103



31-4016



31-2109

31-4016	65293-58	3/4"	Stainless Clamp	Each
31-2103	End Clamp	1 7/8"	Chrome	Pair
31-2109	Body Clamp	3 1/4"	Chrome	Pair



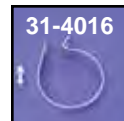
31-2117



31-2118

Black FL Muffler Support Tubes use on 1958-84 FL. Replaces 65318-58A right side and 65318-59B left side.

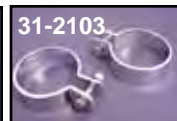
VT No.	Side
31-2117	Right
31-2118	Left



31-4016



31-2109



31-2103



31-2144

3/4" Stainless Clamp replaces 65293-58, fits cigar and other stock dimension mufflers, sold each.

VT No. 31-4016 Polished

Inlet and Body Clamps for mufflers on this page.

VT No.	Type
31-2109	3/4" Body, pair
31-2103	End Clamps, pair
31-2144	End Clamps, Heavy



Chrome 30" Straight Pipe Extension is 1/8" inside diameter to fit over 1 1/4" pipes and allows extension to slide over to desired length. Pair.

VT No. 30-0314



Caution: These exhaust products are not legal for sale or use in California on pollution controlled vehicles. These products are intended for non-highway only.

