



1948-65 Panhead Exhaust



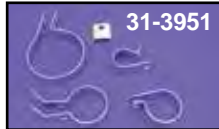
Chrome Flex Exhaust Covers for all Big Twin 1936-69, 1 3/4". Slides on.
VT No. Type
30-0110 MCM
30-0311 Replica



29-0178 Installed



31-4187



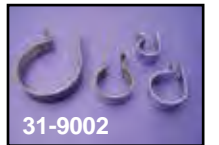
31-3951



31-2126



31-2127



31-9002



31-9005



31-2143



31-0225



31-0229



31-1264



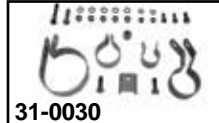
31-1269



31-1271



31-0031



31-0030



31-0069

Clamp Set for 2:1 Single Exhaust available as listed. Order exhaust separately, order header clamps in stainless, VT No. 31-0225 in stainless to complete set.

Chrome	Parkerized	Stainless	Year
—	31-4187	—	1941-57 (3 Piece)
31-3951	31-2126	—	1941-57 OHV
—	—	31-2127	1950-57
31-9002	31-9005	31-2143	1958-69
—	—	31-0225	1948-65
31-0229*	31-3989*	—	1936-69 FL, EL 2-piece
—	31-1264	31-1269	1950-57 Rear
—	—	31-1271	1941-57 End
2772-22	2719-22	—	1941-57
31-0031	31-0030	31-0069	1941-57

*Note: Front Clamp Set

1941-49 Muffler



30-0880

The 30-0880 & 30-0884 have the original seam type construction.



30-0880

FL Stock Replacement Muffler replaces 65251-41. Fits all 1941-49 FL, EL, UL.



30-0164

VT No. Finish
30-0163 Black
30-0164 Chrome
30-0880 Black, Replica
30-0884 Chrome, Replica



29-0823

Two Into One Exhaust designed to replace stock style with 1 3/4" outside diameter pipe systems. Fit rigid or swing arm frames. Systems are four piece construction. 1965 only are original three piece design.

VT No.	Years	Finish/Fits
29-0173*	1948-57	Chrome
29-0174*	1958-64	Chrome
29-0178*	1948-57	Black
29-0154	1965	Pan, Chrome
29-0155	1965	Pan, Black
29-0823	1958-64	Black, 4 Piece Set

*Note: Features replica style saddle Y and riveted flat pipe.



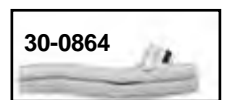
30-0975 Best Made!



30-0746



30-0981



30-0864



30-0200



30-0975



30-0547

Replica Header Pipes.

Chrome	Black	Type	Year
30-0746	30-0981	Flat	1948-64
30-0864	30-0200	Y	1948-57
—	30-0975	Y	1948-57
—	30-0898	—	1948-57 (1.2mm thick)

Front	Rear	Finish
30-0547	30-0561	Chrome
30-0562	30-0749	Black



30-0562

Drag Pipe



30-2128

Drag Pipes have less ground clearance than original equipment. Requires the use of P-Clamps. **Notice: To avoid scraping, do not use unless front fork is stretched at least 4" longer than stock.**

VT No.	Style
30-3128	1 3/4" Goose Drag
31-4055	Bracket



Caution: These exhaust products are not legal for sale or use in California on pollution controlled vehicles. These products are intended for non-highway only.

