



True Dual Exhaust 1948-69



True Dual Chrome Exhaust Systems by Paughco, feature a single pipe for each side. Each pipe is independent. Rear pipe for the left side and front pipe for the right side without intersection. Panhead styles fit with or without mousetrap. The pipes have 1 3/4" outside diameter. Order heat shield set separately. Does not include hardware. Use 1 3/4" slip on mufflers.

Crossover Kits.

VT No.	Fits	Shield Set
29-1106	1948-64 Panhead	30-0376
29-1107	1965 only Panhead	—
29-1108	1966-69 Shovelhead	—

Note: Three and Four Piece Replica Exhaust Systems require hand fitting during final assembly. We suggest to loosen the motor mount bolts during installation to allow pipes to adjust to motor position then re-tighten engine bolts.

Dual Pipe Crossover System 1948-69



Dual Pipe Cross Over Systems less mufflers, chrome. Feature intersection of left side cross over at rear pipe, 1 3/4" outside diameter.

VT No.	Year/Model	Shield Set
	1949-57 Panhead, Rigid Mechanical with Mousetrap	30-0302
29-1100	1958-64 Panhead with Mousetrap	30-0301
29-1164	1965 only Panhead with Mousetrap Kick and Electric	—
29-1188	As Above Replica	—
29-1102	1966-69 Shovelhead, four piece Kick and Electric	—
29-1189	As Above Replica	—

Dual Exhaust Pipe Clamp Kits for FLH. Order pipe support separately for 1958-84.

VT No.	Year	VT No.	Year
31-0706	1958-65	31-2117	Right Side Support
31-0707	1966-69	31-2118	Left Side Support
31-0926	1958-69	31-2117	Right



Rear Cross Over Pipe Clamp bolts to rear cylinder base, each.

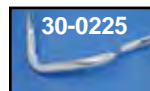
VT No.	OEM	Fits	Finish
31-3946	65510-54	1954-61	Cadmium
31-0474	65510-61	1962-64	Chrome
31-4189	Paughco	1954-61	Chrome

1948-84 Exhaust Component



Rear Heat Shields by Paughco.

Rear	Fits	Rear	Fits
30-0128	29-1165	30-0130	29-1100
30-0128	29-1108	30-0130	29-1101
30-0128	29-1107	30-0130	29-1102
30-0129	29-1106	30-0130	29-1164



Chrome Rear Exhaust Pipes are for Big Twin models with crossovers. To fit stock systems only.

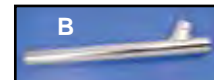
VT No.	OEM	Years
30-0225	65494-61	1958-64
30-0162	65494-65	1965-69



Front Cylinder Header Pipe.

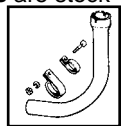
VT No.	OEM	Years
30-0547	Replica	1948-65 Chrome
30-0562	Replica	1948-65 Black

Chrome Rear Exhaust Pipe for Big Twin with crossovers. To fit stock systems only. Fits 1958-65 Panhead, replaces 65496-61. **VT No. 30-0222**



1958-84 Stock Exhaust Connector Flat & Y Pipes are stock replacement type.

Chrome	Black	#	OEM	Years	Type
30-0746			Replica	1936-64	Flat
30-0864	30-0898		Replica	1936-57	Y
30-0199	30-0200	B	65505-41	1936-57	Y
30-0745			Replica	1958-64	Y
30-0201	30-0202	B	65505-58	1958-64	Y
30-0225					Crossover
30-0194		C	65538-65	1965-69	Combo



Front Pipe to Frame Clamps for 1936-69. Set includes 65512-37A pipe clamp and 65513-58 to frame for secure installation.

VT No.	Item
31-0229	31-3989 Set, Parkerized
	31-0229 Set, Chrome
	31-3988 Frame Clamp Only, Black
	31-0926 Front Clamp Only, Parkerized



Cylinder Pipe for use with single exhaust.
Chrome Black Year
 30-0173 30-0259 1948-65
 30-0561 30-0749 1948-65



Caution: These exhaust products are not legal for sale or use in California on pollution controlled vehicles. These products are intended for non-highway only.

