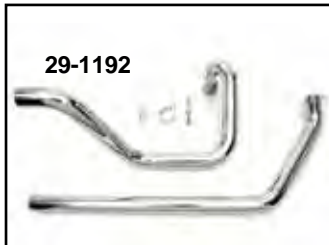
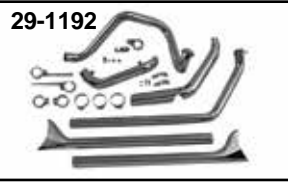




1970-84 Dual Exhaust



True Dual Chrome Exhaust Systems feature a single pipe for each side. Each pipe is independent. Rear pipe is for the left and front pipe is for the right without intersection. 1 3/4" outside diameter. Order heat shield set separately. Does not include hardware. Uses 1 3/4" slip on mufflers.

VT No.	Fits
29-1165	1970-84 Shovelhead FLH
29-1192	1970-84 Shovelhead FLH with fishtail kit

Shield Set
30-0292



Two Piece Heat Shield Set fits 29-1165 for 1970-84 FLH.
VT No. 30-0292

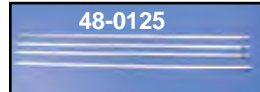


Chrome Super Muffler Clamp Set attaches muffler to 1 3/4" header pipe.
VT No. 31-1007



Dual Exhaust Pipe Clamp Kits are for FLH models. Order pipe support separately for 1958-84.

VT No.	Year	Item
31-0706	1958-65	Clamp Set
31-0707	1966-69	Clamp Set
31-0708	1970-84	Clamp Set
31-2117	Right Side	Support
31-2118	Left Side	Support



High Temperature Exhaust Wrap reduce radiated exhaust heat. Wrap that will withstand up to 2000 degrees. Tie wraps sold available separately.

VT No.	Size	Item
48-0125	14"	Stainless Tie Wraps, 4 pack
48-0157		Stainless Wraps, 10 pack
48-0126	25' x 2"	Black Wrap
48-0127	25' x 2"	Tan Wrap
48-0131	25' x 1.5mm	White Wrap
48-0132	25' x 1.5mm	Black Wrap
48-0137	25' x 2	Brown Wrap
48-0139	25' x 2	Copper Wrap



Footboard Mount Kit fits 1970-84 FLH with drag pipes.
VT No. 27-0599



Footboard Bracket must be used to replace the right side factory floorboard mount if you want to retain footboards on a 1970-84 FLH when using a drag pipe.

VT No. 31-0098



Caution: These exhaust products are not legal for sale or use in California on pollution controlled vehicles. These products are intended for non-highway only.

