

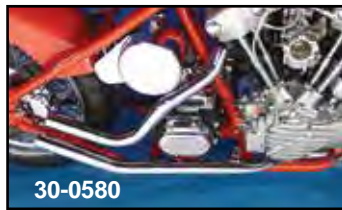
29-0822 Installed

2:1 Exhaust Headers for use forward controls. Fits 1970-84 Shovelheads.

VT No.	Finish
29-0822	Chrome
29-0824	Black



29-0094 Installed



30-0580

Chrome Knucklehead Upsweep Pipe Set includes front and rear upsweep pipe set for rigid frames. Front Pipe is two piece type. Use 1 3/4" extensions or mufflers.

VT No.	Type
29-0094	Upsweep
30-0580	Stacked Upsweep
31-9920	End Clamps
31-2101	P-Clamps

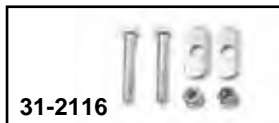


29-0094

## FXR 1982-83



FXR Exhaust Bracket Mounting Block fits 1982-86 FXR models. Sold as each. VT No. 28-0229



31-2116

T-Bolt Set is a replacement for all of our muffler pipes which have channel type mounting. Supplied with nut.

VT No.	U/M
31-2116	Pair
31-0223	10 pack



40-0094

Chrome Oil Tank fits 1982-94 FXR models. Includes mounting hardware and hose. Replaces 62406-81. VT No. 40-0094



31-0189



31-0188

FXR Exhaust Pipe Brackets, zinc plated.

VT No.	OEM	Type
31-0189	65670-82	Front
31-0188	65671-82	Rear



Cast Inner Primary. Fits 1990-1993 FXR. VT No. 43-0233

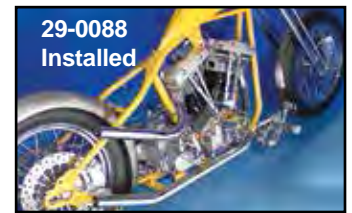


Caution: These exhaust products are not legal for sale or use in California on pollution controlled vehicles. These products are intended for non-highway only.

## Upsweep Exhaust



29-0090 Installed



29-0088 Installed

Up Sweep Header Sets with brackets will accept straight fishtail extensions or mufflers which must be purchased and mounted separately.

VT No.	Model	Year	Note/Frame
29-0092	Panhead	1948-57	#1 Rigid
29-0093	Panhead	1958-65	#1 Swing Arm
29-0091	Early Shovelhead	1966-69	#4 Swing Arm
29-0090	Early Shovelhead	1966-69	#1-2-3 Rigid
29-0088	Shovelhead	1970-84	#2 Rigid
29-0085	Shovelhead	1970-84	#4 Swing Arm

1. Features 'S' type front pipe for better ground clearance. Three piece system.
2. Will not fit with electric start wrap around oil tank.
3. To be used with hydraulic brakes only.
4. Can only be used with FXE type Battery Box

## Shot Gun Drag Pipe



30-3164

Shot Gun Exhaust Systems fit Rigid or FXST-FLST frames only. Will not fit frame with shocks unless noted. Available as a drag pipe with slash cut ends or with tapered muffler. Pipes have 1 3/4"

outside diameter unless noted. Drag pipe lengths are noted.

Tapered	Drag	Length	Fits
29-0103	30-3158	40"	1970-84 Shovelhead Kickstart only
—	30-3155	40"	1966-69 Shovelhead
—	30-3210*	40"	1970-84 FX-FXE
—	30-0357**	34"	1966-84 FX-FL
—	30-3164	40"	1966-84 FX-FL

\*Note: 40" Pipe Set clears shocks and FXE Battery. Designed for swing out kick arm VT No. 17-0307.

\*\*Note: 34" pipe is header set. No slash cut.

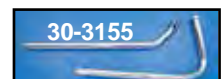
\*\*\*Note: 2" outside diameter.



30-3205 Installed



30-3153



30-3155

Shot Gun Drag Pipe Sets for Rigid or Swing Arm models as noted. Bracket not supplied. Note type of front pipe. Outside is a 2 piece set, flat pipe type is three piece set.

VT No.	Model	F Pipe	Frame
30-3153	Knucklehead	Flat	Rigid
30-3150	Panhead	Outside	Rigid
30-3163	Panhead	Flat	Rigid
30-3205**	Panhead	Flat	Rigid
30-3149	Panhead	Flat	Swing Arm
30-3164	Shovelhead	Flat	Rigid
30-3155	Shovelhead	Outside	Rigid

\*Note: Fits STD heads.

\*\*Note: Side by side shorty

