



Big Twin Rigid Chain Guards



Chrome Chain Guard with bracket fit 1936-57 Big Twins with bracket and custom rigids.

- | | |
|---------------|--------------------|
| VT No. | Item |
| 27-0111 | Guard with Bracket |
| 31-0710 | Bracket Only |



Universal Chrome Left Side Guard is 25" long.
VT No. 27-0100



Rear Chain Guard Mount Kits include bolt, nut, spring, washers and cotter pin for Big Twins and 45's.



Replica V-Twin Chain Guards are produced with permanent tooling for exact fit and shape.

VT No.	Finish	Fits
9746-7	Parkerized	1936-57 Big Twin
2071-10	Chrome	1936-57 Big Twin
13-9186	Black	1936-57 Stud Spring

Rigid Chain Guards by V-Twin Mfg.™ include built in stud for mounting to stock rigid rear fender. Order hardware separately.

VT No.	Finish	Year	Type
27-1600	Black	1936-57	V-Twin
27-1677	Chrome	1936-57	V-Twin
27-0126	Black	1941-57	Replica
27-0127	Chrome	1941-57	Replica
27-0117*	Black	1936-40	Replica
27-0124*	Chrome	1936-40	Replica

*Note: 3 Rivet Construction



Outer Chain Enclosure Cover.

- | | |
|---------------|---------------|
| VT No. | Finish |
| 49-0494 | Chrome |
| 49-0492 | Black |

1958-84 Swingarm Chain Guards



Chrome V-Twin Replica 1958 Style FLH Rear Chain Guard fits 1958-84 FL.
VT No. 27-0121

Isomount Swingarm Chrome Chain Guard is complete with rubber bushing and rear bracket.

- | | |
|---------------|-------------------|
| VT No. | Fits |
| 27-0109* | 1958-85 FX-FL-FXE |
| 27-0108* | 1973-82 FX-FL |
| 37-0593 | Mount Kit |

*Note: Fits 1958-84 FL also for "the lighter" FX look.

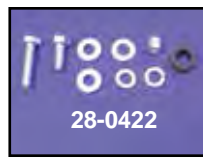
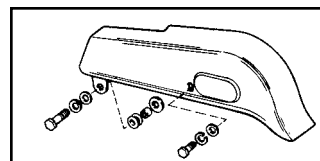


V-Twin Replica 1958-62 FLH Black Chain Guard fits 1958-84 FX-FL.
VT No. 27-0118



Full Chain Guard includes bushing. For 1963-84 FLH style.

- | | |
|---------------|---------------|
| VT No. | Finish |
| 27-0110 | Chrome |
| 27-0116 | Black |



VT No. 28-0422
Mount Kit for 1963-84 FLH

Bolt and Bushing Kit fits FLH chain guard 1963-84.

- | | |
|---------------|----------------------------------|
| VT No. | Item |
| 28-0422 | Chain Guard Bolt and Bushing Kit |
| 28-0132 | Rubber and Steel Bushing Set |
| 37-0427 | Steel Bushing only |
| 28-0411 | Rubber Grommet Only |