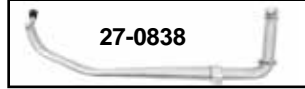
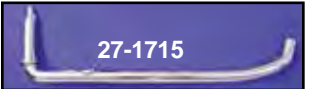
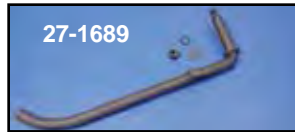
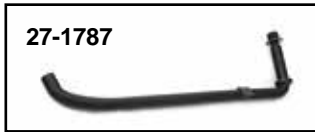


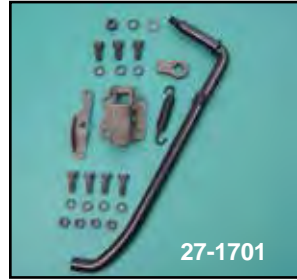
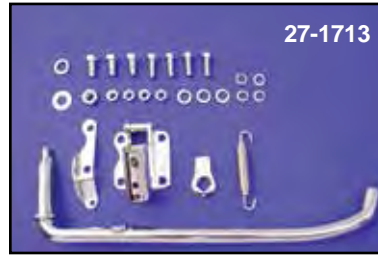


Kickstand



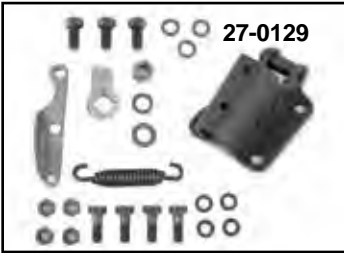
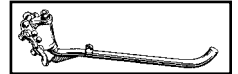
Replica Stock Kickstand Legs replace 50061-36 for 1936-69 models.

VT No.	Finish	Type
27-1787	Parkerized	Replica
27-1679	Black	
27-1689	Parkerized	
27-1707	Cadmium	
27-1708	Chrome	
27-1715	Chrome	
27-1790	Chrome	Replica
27-0838	Zinc	Replica



Replica Kickstand Assembly fits 1936-57 Rigid Big Twins. Includes bracket, lock tab, spring, spring tab, leg and hardware in stock or chrome finish.

VT No.	Item
27-1732	Kit, Replica
27-1701	Kit, Black and Parkerized, Complete
27-1713	Kit, Chrome Complete
27-0082	Kit, zinc
27-0172	Parkerized Replica



Replica Kickstand Mount Kit includes bracket, spring, clip, locktab and mount hardware in parkerized finish.



VT No.	Item	Year	Finish
27-0713	Kit	1936-57	Parkerized
27-0129	Kit	1958-84	Parkerized
27-0381	Bracket	1936-38	Parkerized
27-1508	Bracket	1936-57	Parkerized
27-0533	Bracket	1936-84	Parkerized
27-0598	Bracket w/o	1936-57	Parkerized
27-1682	Spring Clip	1936-84	Parkerized
27-1683	Spring	1936-84	Black
13-0876	Spring	1936-84	Parkerized
27-1684	Lock Tab	1936-84	Parkerized
27-1273	Lock Tab	1936-84	Parkerized



Kickstand and Foot Clutch Bracket Mounting Kit attaches assembly to left side of frame for 1936-99 models.

VT No.	Finish	Type
7803-11	Chrome	Acorn
9617-18	Chrome	Hex
9617-18T	Chrome	Hex
9618-18	Cadmium	Hex
9619-18	Parkerized	Hex
9619-18T	Parkerized	Hex



Complete Chrome Kickstand Mounting Kit includes kickstand mount spring leg stop and spring plate. Fits 1936-84 Big Twin

VT No.	Item
27-0511	Kit
27-0805	Kit with bolts



Chrome Big Twin Kickstand Hardware Springs

VT No.	Item	Year
13-0154	Spring	1936-85
27-0508	With Spring Tab	1936-85, 10 pack
13-0452	Kickstand Spring	
27-0507	1936-84 Big Twin	
27-0506	Spring Plates	1936-90
27-0504	Leg Stop	