



Big Twin Neck Kit



24-0122



24-0253



24-1282



12-0348



12-0823

Fork Stem Bearings and Races.

Order separately as noted.

VT No.	Item	Type	U/M	
24-1282	Kit	All	7 Piece	
12-0334	1949-59 Big Twin	Bearing	Each	
12-0365	1949-59 Big Twin	Race	Each	
24-0118	1960-up Big Twin	Bearings	Pair	
VT No.	Brand	Year	Item	U/M
12-0384	Peer	1960-up Big Twin	Bearings	Pair
12-0823	VT	1960-up Big Twin	Bearing	Each
12-0335	Timken	1960-up Big Twin	Bearing	Each
12-0348	Timken	1960-up Big Twin	Race	Each
12-0383	Peer	1960-up Big Twin	Race	Each



24-0121



24-0119



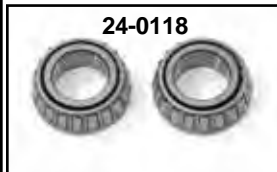
24-1751

Big Twin Neck Cup Assembly available as a complete kit which includes chrome neck cups with races installed and a chrome top nut. Available as component parts for 1948-86 Big Twins.

VT No.	Item
24-0122	Kit, Complete with chrome cups
24-1751	Kit, Complete with zinc cups
24-0253	Kit with cups
24-0121	Cup Set, zinc
24-0119	Cup Set, chrome
24-1071	Without races, Cup Set, chrome



24-0126



24-0118

1960-84 Chrome Cup Set for use with early fork tins.

24-0126	Cup Set
24-0118	Bearing, pair
24-0112	Lower Cover



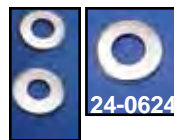
24-0322

Chrome Smoothie Neck Cup Kit includes races, 1" bearings and dust cover set for Big Twins.

VT No.	Item
24-0322	Kit
24-1156	Top Cover
24-0112	Lower Cover



Sealed Bearing Set for 1" stems.
VT No. 24-0089



24-0624

Dust Shields.

VT No.	Finish	Fits	Model
24-0618	Zinc		48-up Big Twin
24-0112	Zinc	Lower	48-up FX-FL
24-0624	Zinc	Chrome (Low)	48-up FX-FL
24-0117	Zinc	Upper & Low	60-up FX-FL
24-0114	Chrome	Upper & Low	60-up FX-FL
24-0237	Chrome	Upper	Big Twin



24-0103

Sealed Timken Neck Bearings feature built in rubber seal where bearing contacts top of race. Available as a complete kit with chrome cups that includes dust shields or as bearings only that can be used to update models where races are pressed into frame neck.

VT No.	Item
24-0103	Chrome Cups with races and Sealed Bearing Kit 1949-88 Big Twin
24-0102	Two Sealed Bearings for 1989-up FXST-FLST, FXR 1980-up FLT, 1992-up Dynaglide model



Hexagon Neck Cup Kit includes 1" neck bearing set.
VT No. 24-0305



Bearing Seal Set. Metal backed seal fits all 1" neck bearing applications pair.
VT No. 14-0174

Raked Kit



24-0274

"Raked" Fork Neck Cup Kit replaces existing removable cups to provide 3° rake when installed. Kit includes cup set, bearing set and dust covers with instructions. Fits 1949-87 Big Twin.

VT No.	Finish
24-0274	Stainless
24-0283	Chrome

Note: Rake neck kits are for **show applications** only and require longer fork tubes to be installed.