



Neck Kit with stop



Smooth Neck Cup Set features built in stop and includes races and bearings.
VT No. 24-0874



Chrome Internal Fork Stop Kit includes pieces for complete installation on Big Twins, and custom frames which accept press in neck cups. Kit allows choice of turning radius of 35 or 45 degrees. For 1936-87 Big Twin in 35° and 45° configuration.
VT No. 24-0296

Chrome Mega-Neck Cup Set features 1" inner diameter bearing set with large outside diameter on the outer race which provides 1.68 times the radial capacity and 1.57 times the axial capacity of a conventional bearing. Kit includes chrome cups, bearings, races and two dust shields.
VT No. 24-0300

Top Nut



Chrome Glide Acorn Nut is 1" x 24T with Shoulder for alignment in top tee, fits 1948-up FL-FLH.
VT No. Item
37-0442 With
7802-1 With
24-1459 Without
37-0443 Without



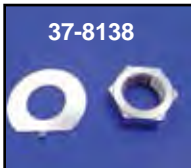
24-1459



Chrome Fork Stem Nut Cover to fit over stock stem nut and held in place by set screws. Cover is one piece.
VT No. Fits
24-0636 1971-87 35mm fork
24-1336 1980-up 39mm fork



24-0185



37-8138



24-0226

Stock Type Stem Nut

VT No.	Year	Type	Finish
24-0185	1948-up	Glide	Zinc
37-8138	1960-up	Glide	Chrome
24-1456	1960-up	Glide	Zinc
17-0924		Lock Tab	
37-0597	Chrome	Nut	
17-0924	Zinc	Lock tab, 10 pack	



17-0924



Stem Nut and Lockwasher Kit includes lock washer and nut.

VT No.	Finish	Item
8808-2	Black	Kit
37-8138	Chrome	Kit
24-0197	Zinc	Kit
24-0226		Nut with Stainless Steel Cover



1949-84 Stem Nut and Lower Cone Nut Set. Thin profile of cone nut allows use of outer covers and cowls.
VT No. 24-0317



37-8137

Chrome Flat Top Stem Nut replaces 45718-71 on 1978-86 FXE-FX-FXR.

VT No.	Item
37-8137	Nut, 7/8 x 24 threads per inch
9963-1	Washer
9963-1T	Washer
37-0988	Washer



VT No. 24-0663



VT No. 24-0662



VT No. 24-0113

FL Cone Cover Nut features cover with built in nut. Replaces 48330-48.

VT No.	Item	Years
24-0113	Hex Type	1960-84
24-0662	Replica Type	1949-84
24-0663	Cone Type	1960-84



24-0622

Lower Cone Nut for Big Twins.

VT No.	OEM	Years
24-0622	48330-48A	1949-59
24-0278	48330-48B	1960-84



1949-60 Top Nut features crenelated design for use with steering damper plates. Replaces 45718-49.
VT No. 24-0120



Wide Glide Top Nut Kit fits 1948-84 FL, 1971-2010 FX. Includes top nut, cover set and lock nut, and tapered bearing set.
VT No. 24-1460