

1973-84 FLH Glide



FLH Style Fork Assemblies are available as single disc model 1972-84 type, which accepts large banana caliper to accept a 10" brake disc. They include chrome slider covers, and chrome triple trees that accept aluminum cowlings and a lower tree that includes a padlock tab. Also included axle and nut, neck bearings, top nut, crown nut, chrome tapered aluminum sliders with stock length tubes and all 1977-up type internals installed. Lower sliders and tube assembly with internals also available in pairs. **Note:** When using a 1972 wheel order axle 44-0228 separately.

VT No.	Item	Slider
24-0520	Kit	Polished
24-0795	Kit	Chrome
24-9943	Kit Custom	Forks include 24-0829 black trees which have a solid mount top. Trees with 4 3/4" center to center riser mount holes. Accepts 24-9900 top tee cover and tins
24-1240	Kit	Chrome Leg/Tree Assembly
24-0519	Leg Assy	Right and Left with Chrome Lower Sliders
24-0084		Chrome Lower Sliders Set
24-0087		Polished Leg Set

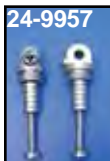
***Note:** V-Twin fork assembly is shipped complete with axle, nut, spacer, top nut, bearing, cone nut and dust cover. Sliders and tubes are assembled.

Adjustable Fork Assembly



Adjustable Fork Assemblies. FLH include black adjustable rake triple tree set, polished sliders with 1977-up type internals installed, stainless slider covers, axle and nut, fork bearings, and cone nut. VT No. 24-2525 and 24-0790 accepts 23-2219 caliper. 24-0550 accepts left side brake component kit VT No. 23-9218. Units accept VT No. 28-0221 riser bushing sets and VT No. 24-9910 top tree cover which place riser stems 3.5" center to center.

VT No.	Type	Year
24-0550	Left	1949-66
24-1865	Left	1967-71
24-1866	Right	1967-71
24-2525	With Chrome Sliders	1972-84
24-0790	Polished	1972-84



Adjustable Fork Tube Plugs.

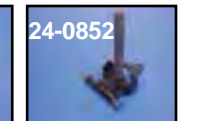
VT No.	Year	Finish
24-9957	1950-76	Zinc
24-0828	1977-84	Zinc
24-1828	1977-84	Chrome



Adjustable Position Tab Set replaces 45710-58 on all adjustable forks 1950-up. **VT No. 24-0124**



Fork Stem Lock Tab for 1948-84 FLH-FXWG. Replace broken, bent or missing tabs on stock lower triple trees, to be welded on. **VT No. 51-0103**



Black Adjustable Fork Tree Kit is available for 1949-76 FLH, 1977-84 FLH, 1980-86 FXWG 41mm fork legs. Showa type is 1977-up. Kits feature swivel type plugs which are included. Lower tree has two positions for changing rake and fork lock tab. Kits use VT No. 28-0221 rubber bushing kit and VT No. 24-9910 top tree cover.

VT No.	Fits
24-0799	1949-76 FLH Complete Set, Black
24-0797	1977-84 FLH 80-86 FXWG Complete, Black
24-0004	As Above without Tabs
24-1055	Partial Kit
24-5001	Partial Kit
24-0817	Top Tree Only 1973-up
24-0852	Lower Tree only with Stem
24-1069	Lower Cross Bar without Slider Cover Tabs
24-0928	Lower Tree only with Stem with damper
24-0495	Lower Cross Bar only with tabs for slider covers
24-0124	45710-50 Adjustable Position Tabs
24-9957	45777-50 Early Top Plugs 1949-76, pair
24-0828	45777-77 Late Top Plugs 77-84 Showa type, pair.
37-9170	Top Tee Bolts with Lock Tabs, Kit
17-0936	45752-50 Lock Tabs
24-0197	Top Nut Kit
37-1545	Pivot Bolt
24-0798	Early Top Tree