

10mm Russell Street Legal Universal Brake Lines are built to your specifications ready for adapter fittings. They are preassembled with high performance #3 stainless braided hose with a rugged Teflon® inner, and crimp-on chrome plated female swivel hose ends. Clear coated for abrasion resistance. Meet the guidelines of the D.O.T. MVSS-106 requirements and are 50-state legal, and compatible with all brake fluids.

VT No.	Length	VT No.	Length	VT No.	Length
23-8352	4"	23-8110	30"	23-8272	56"
23-8002	6"	23-8120	32"	23-8282	58"
23-8010	9"	23-8130	34"	23-8229	60"
23-8020	12"	23-8342	36"	23-8332	62"
23-8030	15"	23-8140	38"	23-8312	64"
23-8362	16"	23-8242	40"	23-8322	66"
23-8040	17"	23-8150	42"	23-5833	68"
23-8212	18"	23-8252	43"	23-5835	72"
23-8050	19"	23-8262	44"	23-5836	74"
23-8060	21"	23-8192	45"	23-5840	80"
23-8070	23"	23-8372	46"		
23-8939	24"	23-8160	47"		
23-8080	25"	23-8202	50"		
23-8090	26"	23-8170	52"		
23-8100	28"	23-8180	54"		



Chrome Banjo Bolt Kits are for use with universal or stock lines, front and rear. Washers are included. The VT No. 37-8979 is to be used when a master cylinder or caliper uses a 3/8"-24 banjo bolt and the line has a 12mm hole instead of 10mm.

VT No.	Line	Size/Item
23-0612	10mm	3/8"-24
23-0613	10mm	Washers
23-0614	12mm	7/16"-24
23-0615	12mm	Washers
37-8979	12mm	3/8"-24 (Special Kit)
14-0568	10mm	Washer with O-Ring
14-0567	12mm	Washer with O-Ring



Chrome Banjo Bolts include seal washers.

VT No.	Size	MM	Style
2190-3	3/8" - 24	10	Dome
2191-3	3/8" - 24	10	Allen
2192-3	7/16" - 24	12	Dome
2193-3	7/16" - 24	12	Allen



Brake Banjo Seal Washers feature built in O-Rings.

VT No.	Type
14-0567	7/8", 12mm fits handlebar cylinders 1984-00, single disc
14-0568	3/8", 10mm fits 1982-00 dual disc Brake Calipers
14-0578	2001-up master cylinder and brake calipers
14-0048	2006-up Banjo Bolts



Allen Button Head Banjo Bolts are sold with washers.

VT No.	Size	MM
37-8517	3/8"-24	10mm
37-8518	7/16"-24	12mm

Universal Brake Fitting & Bolt

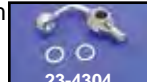
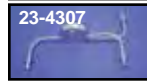
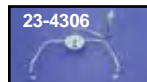
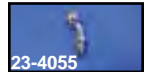


Chrome Adapter Fittings see listing for application.

*Note: Most common use

VT No. Fitting Type Adapts To:

- 23-4047 10mm Banjo, Straight
- 23-4050 10mm Banjo, 35°
- 23-4053 10mm Banjo, 45°
- 23-4051 10mm Banjo, 90°
- 23-4052 7/16" Banjo, Straight
- 23-4053 7/16" Banjo, 35°
- 23-4056 7/16" Banjo, 35°
- 23-4054 7/16" Banjo, 90°
- 23-4057 12mm Banjo, Straight
- 23-4058 12mm Banjo, 35°
- 23-4059 12mm Banjo, 90°
- 23-4244 1/8" Male NPT, Straight
- 23-4279 1/8" Male NPT, 90°
- 23-4293 1/8" Male NPT, 45°
- 23-4298 Male "T"
- 23-6033 Flare Union
- 23-6034 3/8"-24 Banjo Bolt
- 23-6035 7/16"-24 Banjo Bolt
- 23-6040 10mm x 1.25" Banjo Bolt
- 23-6041 12mm x 1.25" Banjo Bolt
- 23-6036 3/8"-24 Double Banjo Bolt
- 23-6042 10mm x 1.25" Double Banjo Bolt
- 23-0746 3/8"-24 Brake Switch Banjo Bolt
- 23-6037 35° Rear Banjo, 10 mm
- 23-6038 90° Short Rear Banjo, 10 mm
- 23-6039 90° Long Forward Control Banjo, 10 mm
- 23-4396 3/8"-24 Male Inverted Flare, straight, 2 pack
- 23-4380 3/8"-24 Male Inverted Flare, 90° and 120°
- *Junction block to master cylinder
- 23-4281 3/8"-24 Male Inverted Flare, 45°
- *Rear Calipers
- 23-4282 3/8"-24 Male Inverted Flare, 90°, short
- *Junction Block to Front Caliper
- 23-4283 3/8"-24 Male Inverted Flare, 90°, long
- *Junction Block to Front Caliper
- 23-4284 3/8"-24 Male Inverted Flare, 150°
- *Forward Controls
- 23-4285 3/8"-24 Male Inverted Flare, 60°
- *Rear Calipers
- 23-4306 Front Wide Glide Junction Block
- 23-4307 Front Narrow Glide Junction Block
- 23-4305 90° long forward control banjo, 10 mm
- 23-4303 35° short rear brake banjo, 10 mm
- 23-4304 90° short rear brake banjo, 10 mm



CLASSIC