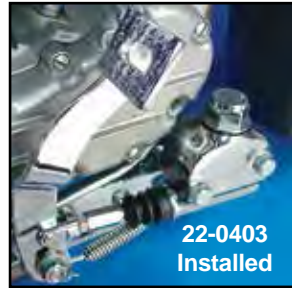


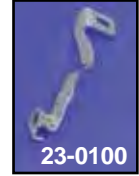


# 1958-69 Brake



**1958-69 Hydraulic Brake Kit** includes all parts illustrated as replacement for flat side engine or for use on cone motors with an outside frame pipe. Available with or without cast iron Wagner style master cylinder

- VT No. Master Cylinder**  
**22-0747** Without, Zinc  
**22-0401** Without, Chrome  
**22-0403** With Chrome  
**22-0402** With Painted  
**22-0781** With, Zinc & Rubber Pedal Pad



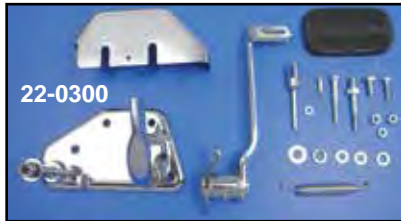
## 1958-69 Big Twin Rear Brake Components.

- | VT No.         | Item        | Finish  |
|----------------|-------------|---------|
| <b>23-0100</b> | Pedal       | Chrome  |
| <b>23-0101</b> | Pedal Plate | Chrome  |
| <b>23-1742</b> | Spacers     | Zinc    |
| <b>13-0147</b> | Spring      | Chrome  |
| <b>13-0175</b> | Spring      | Chrome  |
| <b>23-0115</b> | Plunger     | Chrome  |
| <b>23-0192</b> | Plunger     | Zinc    |
| <b>16-0432</b> | Tool        | Locking |



**Master Cylinder Cover**  
VT No. 42-0315

# Forward Brake Kit



**Brake Kit for 1979-84 FLH** includes chrome pedal, chrome plate with front footboard bracket, plunger, spring and stud. Order master cylinder separately.

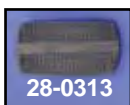
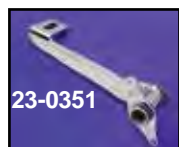


- | VT No.         | Item                     |
|----------------|--------------------------|
| <b>22-0300</b> | Chrome Kit               |
| <b>23-1735</b> | Chrome Master Cylinder   |
| <b>23-1772</b> | Alloy Master Cylinder    |
| <b>27-0596</b> | Rear Floor Board Bracket |
| <b>37-6366</b> | Master Cylinder Stud     |



## Chrome Hydraulic Brake Pedals and Backing Plates.

VT No.	#	OEM	Year	Item
<b>23-0120</b>	A	42411-70	1970-78 Big Twin	Stop
<b>23-1742</b>		50668-35	Spacers for above	Spacers
<b>13-0147</b>	B	42427-58	Spring	Spring
<b>23-0103</b>	D	42402-73A	1970-Early 79 FLH	Pedal
<b>23-9192</b>	C	42402-79	Late 1979-84 FLH	Pedal
<b>23-0451</b>	E	42480-79	1979-84 FLH	Plate
<b>23-0102</b>	F	42401-73A	1970-Early 79 FLH	Plate



**28-0457**



**Chrome Forward Brake Pedal** allows driver better access to pedal from footboard. Fits 1979-84 FLH.

- | VT No.         | Item  |
|----------------|-------|
| <b>23-0351</b> | Pedal |
| <b>28-0313</b> | Pad   |
| <b>28-0457</b> | Pad   |



**VT No. 22-1017 Shown**

**Original Forward Brake Control Assemblies** will equip all Big Twins with hydraulic brakes and powered by either Evolution or 1970-99 Shovelhead engines. Available in either Wagner or Kelsey Hayes styles, with or without master cylinders. Footboards can be fitted to our Wagner style kits VT No. 22-0500, 22-0505 or 22-0506. Wagner styles use

41761-73 master cylinder, or Kelsey Hayes type 41576-79A, for those wishing to utilize their existing master cylinder. Complete assemblies include detailed instructions and diagram for installation. Display packaged.

- | VT No.         | Type         | Note                        |
|----------------|--------------|-----------------------------|
| <b>22-0500</b> | Wagner       | Without Master Cylinder     |
| <b>22-0505</b> | Wagner       | With Plain Master Cylinder  |
| <b>22-0506</b> | Wagner       | With Chrome Master Cylinder |
| <b>22-0501</b> | Kelsey Hayes | Without Master Cylinder     |
| <b>22-1017</b> | Kelsey Hayes | With Chrome Master Cylinder |

**\*Note:** For kits 22-0500, 22-0505, 22-0506, 22-0501, and 22-1017, use Russell front line 23-8809 and rear line 23-8915 for disc brake models, and tee 23-0707.



**Footpeg Mounting Studs** fit through Wagner or Kelsey Hayes master cylinders to mount foot pegs to these forward assemblies. Stud side shown accepts that size footpeg yoke.

- | VT No.         | Type                       |
|----------------|----------------------------|
| <b>37-8986</b> | Kelsey Hayes Type 3/8 — 24 |
| <b>37-8987</b> | Wagner Type 1/2 — 20       |