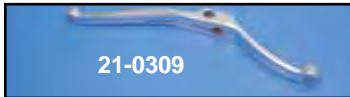
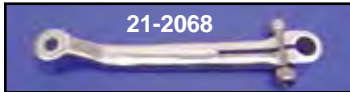




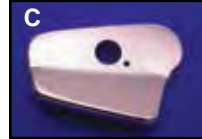
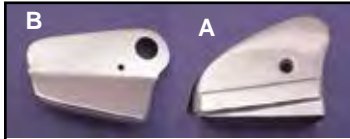
# Shifter Lever



**Chrome Shift Lever** for Big Twin Models.

| VT No.  | Fits                      | Type     |
|---------|---------------------------|----------|
| 21-2013 | 1952-84 FLH, not threaded | Stock    |
| 21-0311 | As Above, Spline          | Stock    |
| 21-2068 | As Above, Stainless Steel | Stock    |
| 21-0308 | 1952-84 FLH               | Heel Toe |
| 21-0309 | 1952-84 FLH Spline        | Heel Toe |
| 21-0302 | 1974-85 FXE Spline        | Stock    |

# Shifter Linkage



**Chrome Replica Foot Shifter Lever Cover** for Big Twin.

| VT No.  | # | Fits            |
|---------|---|-----------------|
| 42-0320 | A | 1952-64 FL      |
| 42-0319 | B | 1965-84 FLH     |
| 42-0661 | C | 1971-73 FX only |



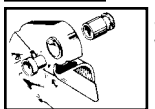
**FX-FXE Shifter Linkage** replaces 34614-74 on

1974-84 4 Speed models. Features adjustment at both ends. Cadmium finish.

| VT No.  | Type                  |
|---------|-----------------------|
| 21-2021 | Assembly              |
| 17-9781 | Right Thread end only |



**Chrome Cover Shifter Lever** replaces 60400-74. Use on all 1974-up FX models except FXWG and FXR. VT No. 42-0324



**Shifter Bracket Bushing**

| VT No.  | Fits             |
|---------|------------------|
| 10-2502 | 1952-69 Big Twin |
| 10-2511 | 1970-84 Big Twin |



**Forked Rod End Clevis** is threaded  $\frac{5}{16}$  — 24 for use on shifter or brake rods.

| VT No.  | Pin Size       | Finish |
|---------|----------------|--------|
| 21-2033 | $\frac{1}{4}$  | Chrome |
| 49-3065 | $\frac{5}{16}$ | Chrome |



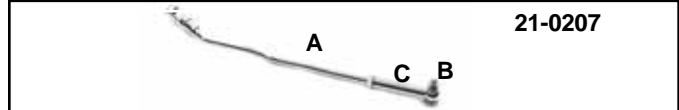
**Clevis Pins**, zinc plated includes cotter pins and washers, sold in 10 pack.

| VT No.  | Use                          |
|---------|------------------------------|
| 23-0421 | 1930-69 Brake, 1982-up Brake |
| 21-1986 | 1952-84 Shifter              |
|         | 1970-81 Brake                |



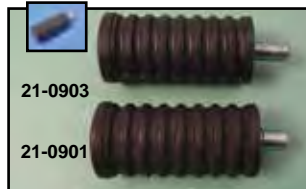
**Chrome Shift Shaft Cover** has  $\frac{1}{2}$ " inner diameter to fit over unused shifter shaft in primary cover when installing forward controls, sold each.

| VT No.  | Type  |
|---------|-------|
| 37-8872 | Acorn |
| 44-0047 | Dome  |



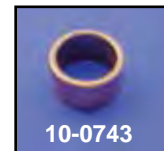
**Shifter Rod Linkage** is available as a complete rod, end and shoulder bolt, or separately, chrome.

| VT No.  | # | Item  | Finish     |
|---------|---|---|------------|
| 21-0207 | A | Rod Kit complete                              | Chrome     |
| 21-0226 | A | 2" Rod Kit complete                           | Chrome     |
| 21-0212 | A | As Above                                      | Cadmium    |
| 21-0230 |   | Shifter Rod Extended 4" fits 1958-78 Big Twin | Chrome     |
| 21-0205 | B | Shoulder Bolt and Nut                         | Chrome     |
| 9103-4  | B | Shoulder Bolt and Nut                         | Chrome     |
| 9706-4  | B | As Above                                      | Parkerized |
| 7819-4  | B | As Above                                      | Cadmium    |
| 21-0213 | B | As Above                                      | Cadmium    |
| 21-0204 | C | Rod End Lolly-Pop                             | Chrome     |
| 21-0231 |   | Rod End Kit                                   | Zinc       |
| 21-2070 | C | As above                                      | Parkerized |
| 21-2075 | C | As above                                      | Cadmium    |
| 23-0421 |   | Clevis Pin                                    | Zinc       |



**Stock Rubber Shifter Pegs** are long or short stud. The  $\frac{7}{8}$ " long stud is used when the lever is unthreaded and stud accepts a nut. Short  $\frac{5}{8}$ " threaded screws into lever. Includes a 10 pack of 5 long and 5 short.

| VT No.  | Color | Type    |
|---------|-------|---------|
| 21-0901 | Black | Short   |
| 21-0317 | Black | 10 pack |
| 21-0902 | White | Short   |
| 21-0903 | Black | Long    |
| 21-0904 | White | Long    |
| 21-0908 | Black | X-Long  |



**Inner Shifter Arms** are splined and fit through primary cover on 1974-84 FX 4-Speed, have linkage through front primary cover.

| VT No.  | Year         | Model  | Item      |
|---------|--------------|--------|-----------|
| 17-9756 | 1974-Early79 | FX-FXE | Lever     |
| 17-9757 | 1979-84      | FX-FXE | Lever     |
| 17-9769 | 1982-84      | FXR    | Lever     |
| 10-0743 | 1974-84      | FX     | Bushing   |
| 12-0905 | 1974-84      | FX     | Snap Ring |