



Clutch Hub



Big Twin Stud Clutch Hub fits 1941-Early 84 and features 53 long rollers, outer spring plate and nuts.

VT No.	Stud
18-1216	5
18-1218	3



Clutch Hub Nut and Seal Kit for use on all 1941-84 Big Twins. Includes nut, seal, and lock tabs. Packaged.

VT No.	OEM	Item
17-0121	17-0121	Kit Complete
17-0881	14-0103	Seal, 5 pack
	12-0508	Nut, each
	17-0904	Lock, 10 pack
	12-0208	Key, 10 pack
	17-0881	Kit Replica
	2548-8	Nut



The Big Fixx for 74 and 80 Clutch contains 52 roller bearings which take the place of the offset roller bearings and bearing retainer, resulting in a smoother more positive, wobble-free clutch operation.

VT No. 20-0229



Sifton Retainer Kit includes a clutch drum retainer designed to smooth clutch operation of all 1941-84. The retainer cures the problem of the uncontrollable "Grabby Clutch" found in the clutch system.

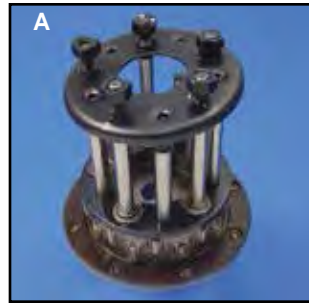
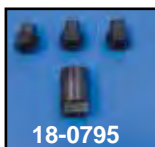
VT No.	Item
18-3116	Retainer Kit
12-1195	Snap rings

18-3116 Installed



Spring Collar Assembly for 1941-84 eliminates wobbly pressure plate, gives a balanced spring load, providing a smooth positive clutch operation with a minimum number of adjustments. The nuts go through the spring collar which strengthen and stabilize it. Assembly is available for 3 and 5 stud hubs. Outer spring plate is available separately.

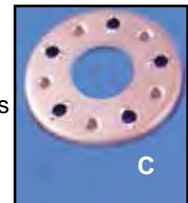
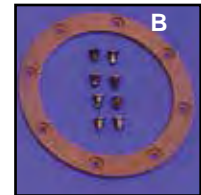
VT No.	Item
20-0300	Kit, 3 Stud
18-8242	Plate, 3 Stud
18-0795	3 Piece Nut Set
20-0332	Polished Outer Plate



Big Twin Clutch Hubs for 1941-84 are available assembled with rollers, liner, top plate and adjusting nuts. They are also available as bare hub only.

VT No.	#	Item
18-3153	A	Complete 3 Stud
18-3154	A	Complete 5 Stud
18-3151*		3 Stud
18-3150*		5 Stud
18-3111	C	Outer Plate 3 Hole, Black
18-3235	C	As Above, Chrome
18-3112	C	Outer Plate 5 Hole, Black
18-3236	C	As Above, Chrome
18-3113	C	Outer Plate 10 Hole, Black
18-1125	B	Hub Liner, Stock with rivets
18-3124	B	Hub Liner, Nyla-tron with rivets
37-8807		Rivets for Liner

*Note: Sold as bare hubs.



Big Clutch Hub Hardware Kit for 1941-84 includes 20 rollers with cage, liner with rivets, retainer springs, outer pressure plate with either 3 or 5 adjusting nuts.

VT No.	Hub Type
18-3638	3 Stud
18-3639	5 Stud

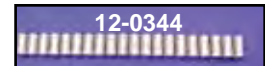


Sifton Clutch Spring Sets are heavy duty ten piece sets with red coating.

VT No.	Fits
13-0788	1941-67
13-0789	1968-84
2481-6	Nuts

Rollers Only.

20 Pack	100 Pack	OEM	Size
12-0344	12-4590	9540A	Standard
12-0363	12-4591	9541	.0002



18-3611



Clutch Stud Nut and Plate Kit includes slotted nuts, roller retainer plate, outer pressure plate and retainer springs in proper amounts for hubs listed 1941-84.

VT No.	Item
18-3611	3 Stud, Stock
18-3620	5 Stud
18-3621	10 Stud



Chrome Clutch Spring Set for use on 1941-84, when exposed on belt drive models. Ten pieces per kit. These are our late style springs with durable chrome finish.

VT No. 13-0200