



Pushrod Cover Kit



V-Twin Chrome Pushrod Cover Kits in stock style gives all the parts needed for complete installation. All are 16 piece kits.

VT No.	Year	Model
11-0900	1966-79	Shovelhead
11-0902	1948-65	Panhead
11-0906	1966-84	Stroker, longer
11-0901	1980-85	Quad type
11-1082		Titanium



Chrome Replacement Upper Pushrod Cover Kits (Outer). Each kit contains four chrome clips, four springs, four cork gaskets, and four steel washers.

VT No.	Model	Brand
7509-20	Knucklehead (1936-39)	Colony
7507-20	Panhead	Colony
11-0929	Panhead	V-Twin
7508-20	Shovelhead/Knucklehead	Colony
11-0928	Shovelhead/Knucklehead	V-Twin
8602-20	Shovelhead Stroker	V-Twin



Inner Pushrod Cover Set in zinc plated steel for 1936-78 type OHV. Set of four.

VT No.	Year	Type	Brand
7808-4	1936-78	Cork	Colony
11-0924	1936-78	Cork	V-Twin
11-0908	1979-99	Quad	V-Twin
9213-4	1979-99	Quad	Colony



Chrome Grooved Lower Pushrod Cover Set made of billet, includes rubber seals. Fits 1948-84 Panhead/Shovelhead.

VT No. 7135-8

VT No. 7135-8T



Pushrod Cover Cup Set.

VT No.	Item
37-9078	Chrome Skull
37-9079	Gold Skull
11-1073	Brass Hex



37-9079



11-1073



37-9078



37-9078



Pushrod Cover Seal Kit for 1948-78 Panhead-Shovelhead. Available in rubberized cork or blue rubber.

VT No.	Color
8728-12	Rubberized Cork
14-0970	Rubber



Pushrod Cover Seal Kits include enough pieces to seal four complete pushrod covers on years listed. Available in cork, quad, machined rubber seals.

James	VT No.	Type	Model/Year
14-0667	15-0626	Cork	1948-79 Big Twin
14-0823	14-0970	Rubber	1948-79 Big Twin, Silicone
14-0669	14-0027	Quad	1980-84 Big Twin



Chrome Lower Push Rod Tube Sets.
*Note: Gold Plated

VT No.	Brand	Year	Model
11-0922	V-Twin	1948-79	Panhead-Shovelhead
7823-12	Colony	1948-79	Panhead-Shovelhead
11-0907	V-Twin	1980-84	Shovelhead, Quad
11-0918*	V-Twin	1980-84	Shovelhead, Quad
7617-12	V-Twin	1936-39	Knucklehead
7824-12	Colony	1940-47	Knucklehead
7824-12T	V-Twin	1940-47	Knucklehead

VT No.	James	Year	Item
15-0116	15-1137	1936-Early 79	Small Cork
14-0028	—	1936-Early 79	Red Silicone
15-0348	—	1936-Early 79	Rubber
15-0117	15-1138	1948-Early 79	Large Cover
14-0029	—	1948-Early 79	Red Silicone
15-0349	—	1948-Early 79	Rubber



11-0921
Stroker

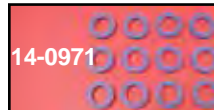


11-0915 Stock

Pushrod Cover Individual Parts, in chrome steel.

VT No.	Model	U/M
11-0917	Cup	4
11-1073	Cups, Hex, Brass	4
11-0916	Clip	4
13-0101	Spring	10 pack
12-0711	Washer, Inner	10 pack
15-0117	Large Cork	100 pack
15-0116	Small Cork	100 pack
11-0915	1966-99 Big Twin Clip Stock	4
11-0921	1966-84 Big Twin Clip Stroker	4
11-1073	Brass Hex Cup	4

Pushrod Seals



1936-47 Big Twin Pushrod Cover Seal Kits include enough pieces to seal four complete pushrod covers on years listed.

VT No.	Color
14-0971	Blue
8729-12	Black



Pushrod Tube Quad Seals or O-Rings. Quad Seals feature four side seal design, 10 pack.

VT No.	Use	Year
14-0508	Upper Cover Small Quad	1979-84
14-0512	Middle O-Ring	1979-up
14-0514	Lower O-Ring	1979-80
14-0513	Lower Cover Large Quad	1981-83



Silicone Seals are lathe cut, then ground with perfect outer diameter finish, withstand heat, oil and gas.

VT No.	OEM	Item	U/M
14-0028	17955-36	Small Push Rod	50 pack
14-0029	17955-48	Large Push Rod	50 pack